

**THE
SPY WHO
LOVED
ME™**

LOTUS
esprit



Pack 06

BUILD INSTRUCTIONS

**STAGE 043: ATTACHING THE
CIRCUIT BOARD HOLDER**

**STAGE 047: FITTING THE SEAT COVER
AND THE SEATS**

**STAGE 044: INSTALLING THE BATTERY
COMPARTMENT AND CIRCUIT BOARD**

**STAGE 048: ATTACHING
THE BULKHEAD**

**STAGE 045: FITTING THE
SEAT CUSHION**

STAGE 049: ADDING THE SEAT BELTS

**STAGE 046: FITTING THE
BACKREST CUSHION AND ASSEMBLING
THE SEAT**

**STAGE 050: FITTING THE
BULKHEAD GLASS FRAME**

THE SPY WHO LOVED ME © Danjaq, LLC and Metro-Goldwyn-Mayer Studios Inc. THE SPY WHO LOVED ME, *007*™ and related James Bond Indicia © 1962-2024 Danjaq, LLC and Metro-Goldwyn-Mayer Studios Inc. THE SPY WHO LOVED ME, *007*™ and related James Bond Trademarks are trademarks of Danjaq, LLC. All Rights Reserved. Produced under licence from Group Lotus LTD. LOTUS, the Lotus Roundel, car names and all associated logos and distinctive designs are trade marks of Group Lotus LTD.

Advice from the experts

Spare screws are included with each part. Occasionally, you may be instructed to keep spare or unused screws for a later stage. Keep these spares in a safe place and label them correctly.

Please make sure you don't mix up the screws. They look quite similar, but the threads do vary slightly. Using the wrong screws may damage the parts.

When securing parts together using multiple screws, fit each screw loosely to ensure all the parts are correctly aligned before gently tightening them firmly, but not overtight, in the order in which you placed them.

The screwdriver can be magnetized by stroking it with a magnet (fridge magnet, etc.) enabling it to hold the screws and make assembly easier.

If a screw is tight going into a metal part, do not force it as you may shear the head off. Remove it and put a tiny smear of Vaseline, soap or light oil on the thread. That will lubricate it and make it easier to drive home.

During the course of this build, you will receive many pieces that you will assemble immediately – following the instructions in the corresponding stage – and other pieces that you should store safely to one side, for use in future assembly stages.

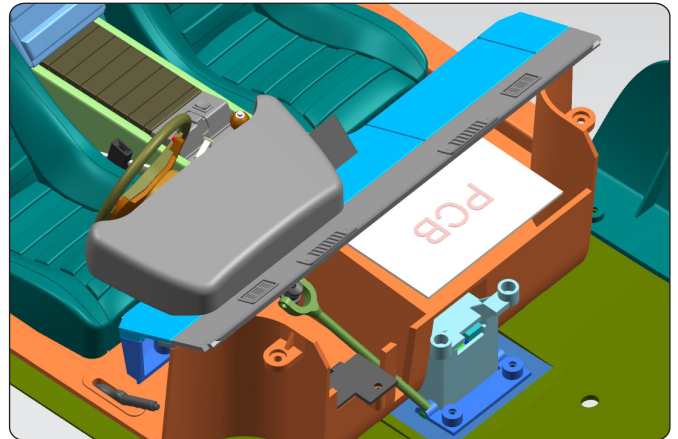
Left and Right! When building your *The Spy Who Loved Me* Lotus Esprit, the left- or right-hand side refers to that side as if you are sitting in the car.



WARNING: Some parts are assembled using magnets. These magnets can cause serious injury if they are swallowed. Keep away from children. If you suspect a magnet has been swallowed, seek medical help straight away.

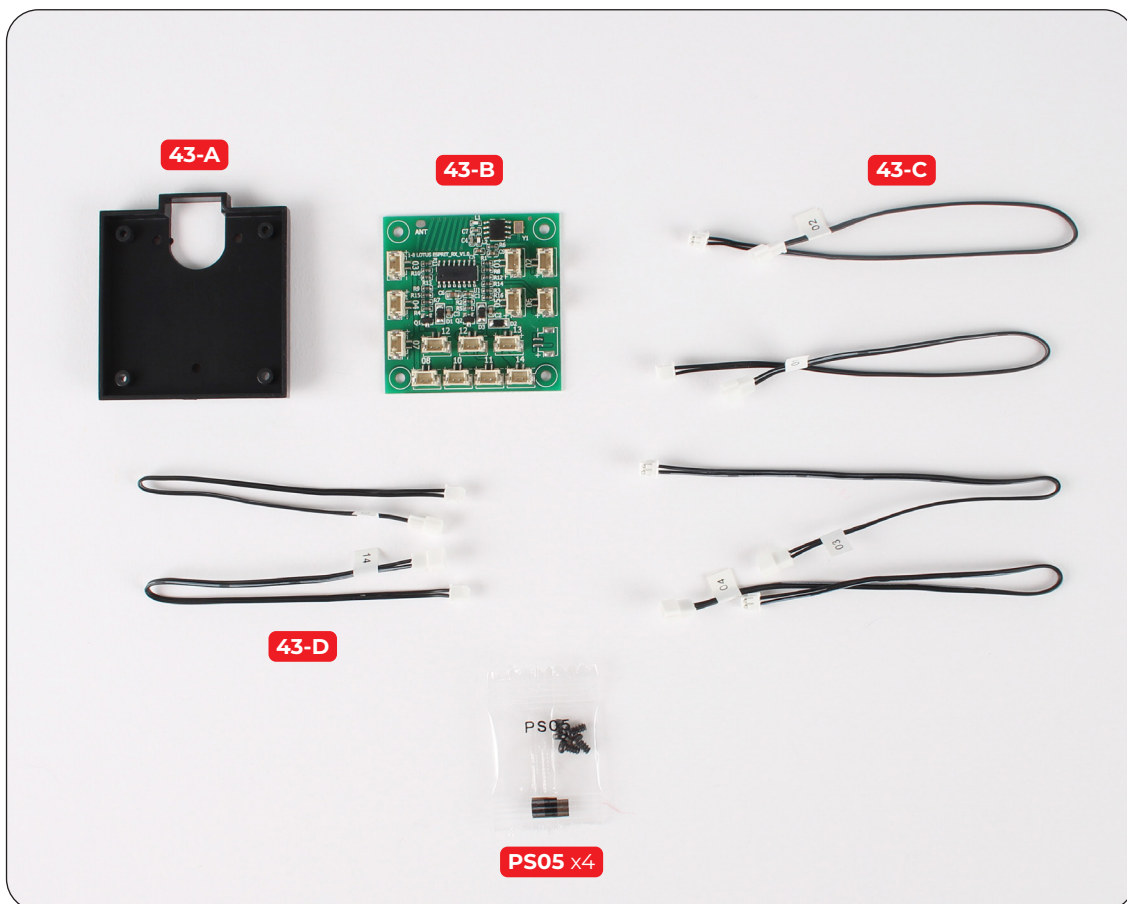
Stage 043: Attaching the Circuit Board Holder

In this stage you'll attach the circuit board holder and plug the wires into the circuit board.

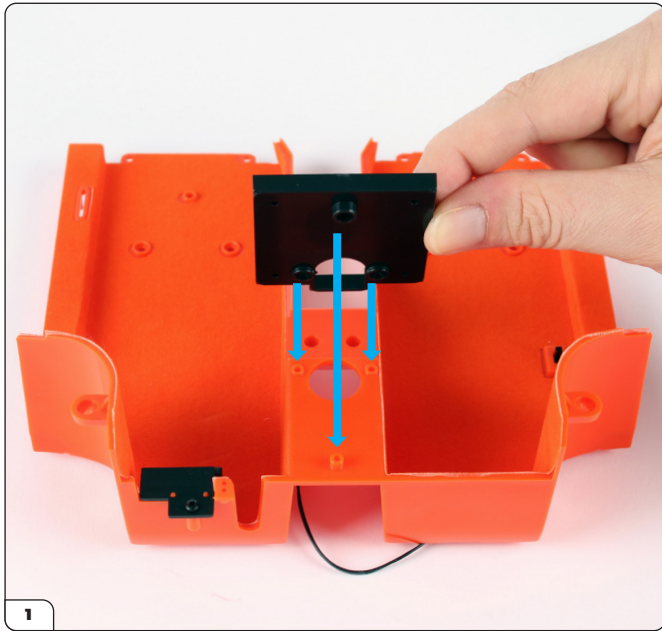


STAGE 043 PARTS LIST

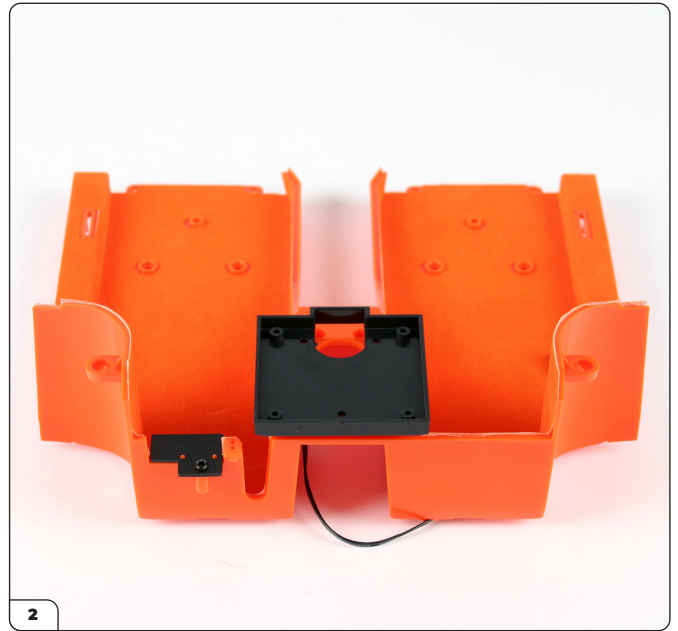
Name
43-A Circuit board holder
43-B Circuit board
43-C Wires (No. 01, 02, 03, 04)
43-D Wires (No. 13, 14)
PS05 screws x4



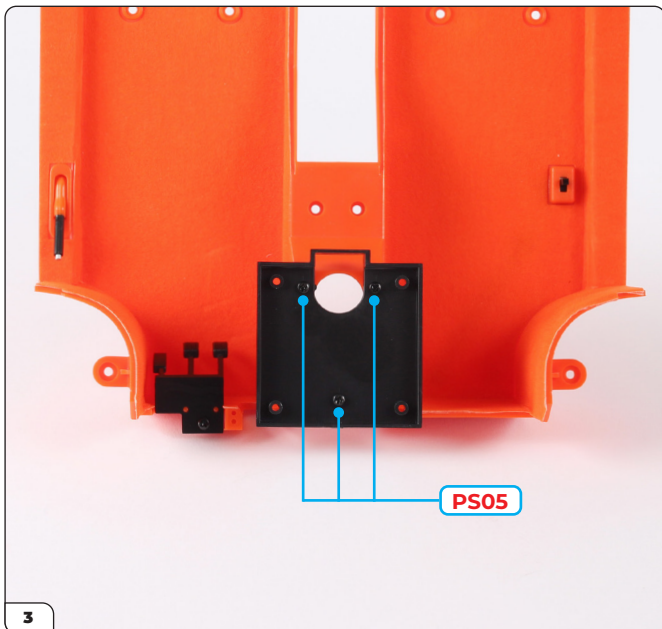
Stage 043: Attaching the Circuit Board Holder



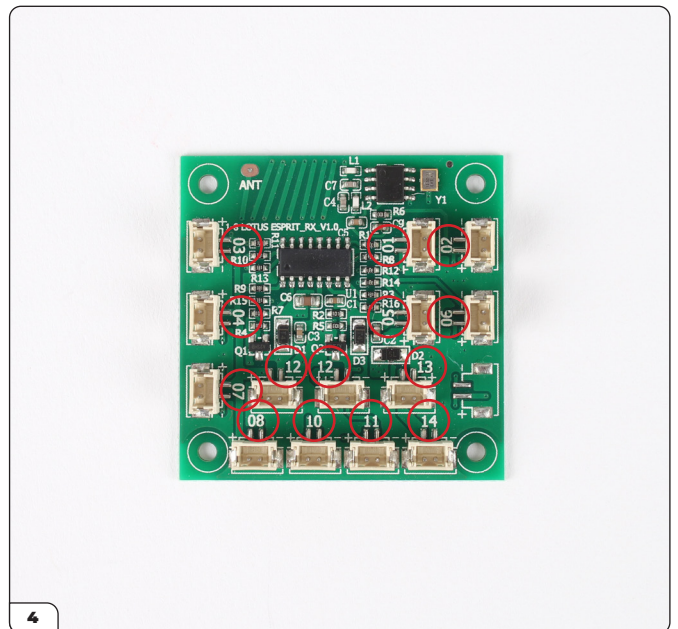
Place the cockpit floor assembly (stage 042) on your work surface. Align the circuit board holder (43-A) with it as shown.



Place the circuit board holder onto the three screw holes.



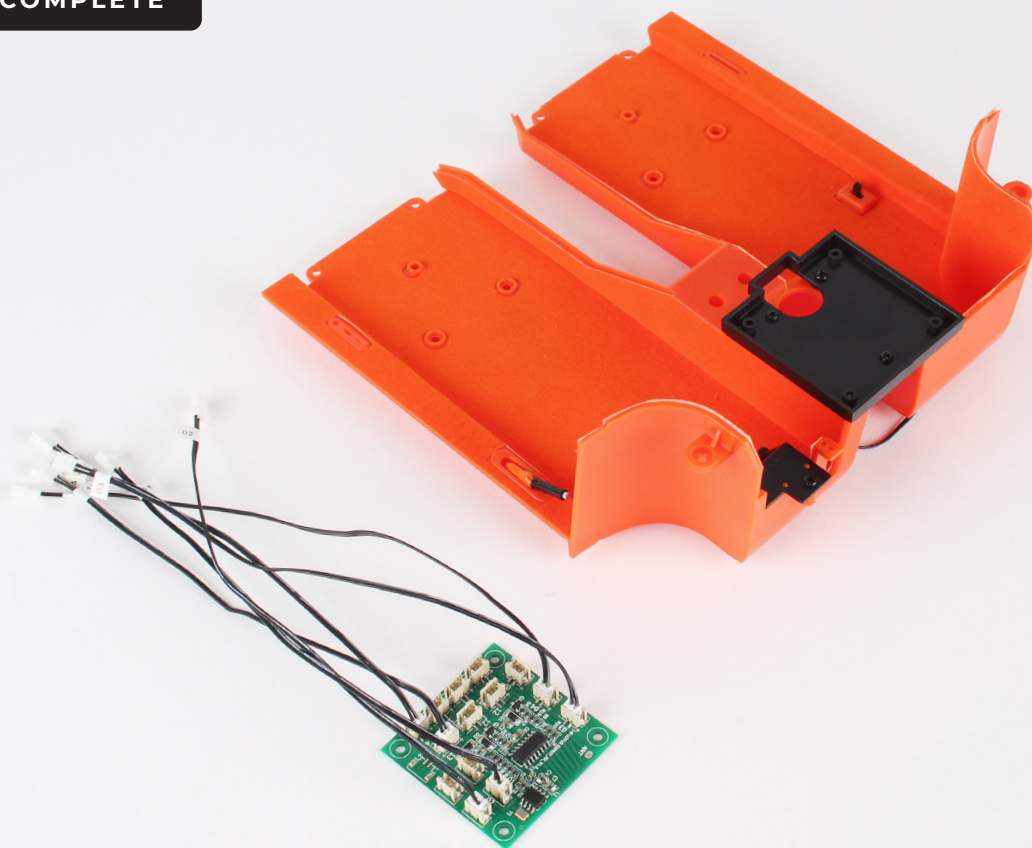
Secure with 3x PS05 screws.



Take the circuit board (43-B). Each socket is marked with a number (circled). Note there are two sockets marked with '12'.

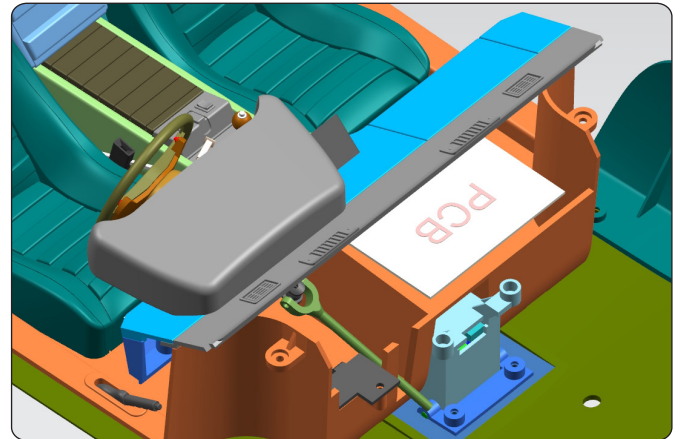
Stage 043: Attaching the Circuit Board Holder

STAGE COMPLETE



Stage 044: Installing the Battery Compartment and Circuit Board

Next you'll install the battery compartment. After that you'll fit the circuit board and attach the dashboard.

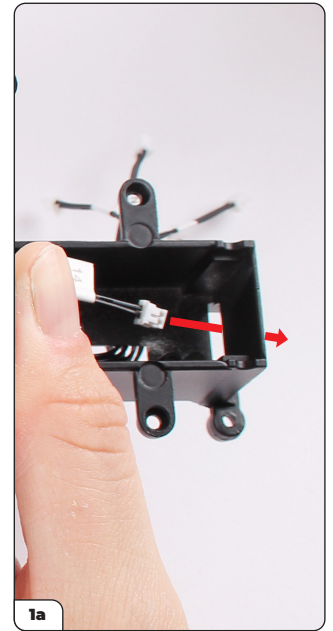
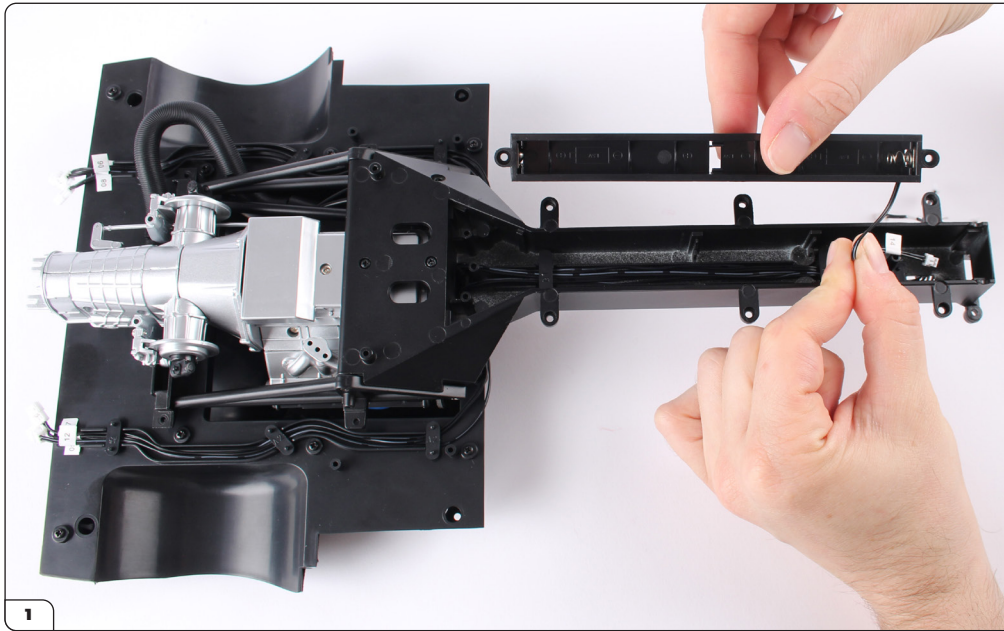


STAGE 044 PARTS LIST

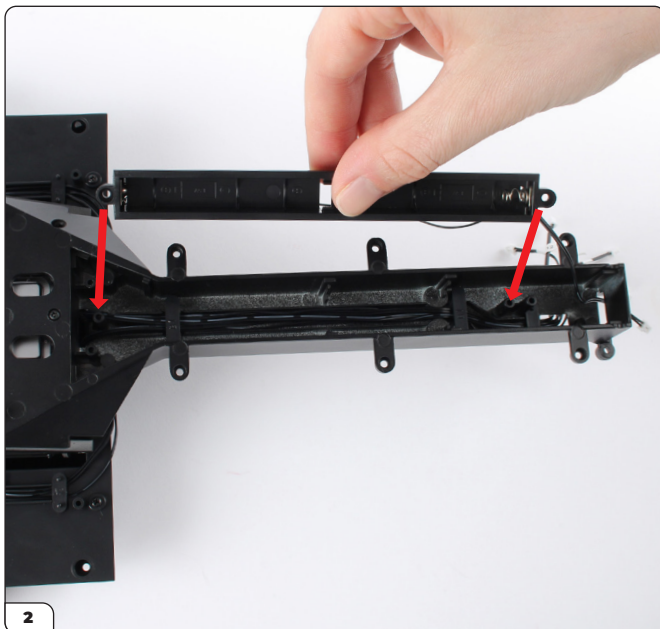
Name
44-A Battery compartment
44-B Wires (No. 05, 06)
44-C Wires (No. 07, 08, 12 x2)
44-D Steering column bracket
DS02 screws x3
PS02 screws x7
PS14 screws x2



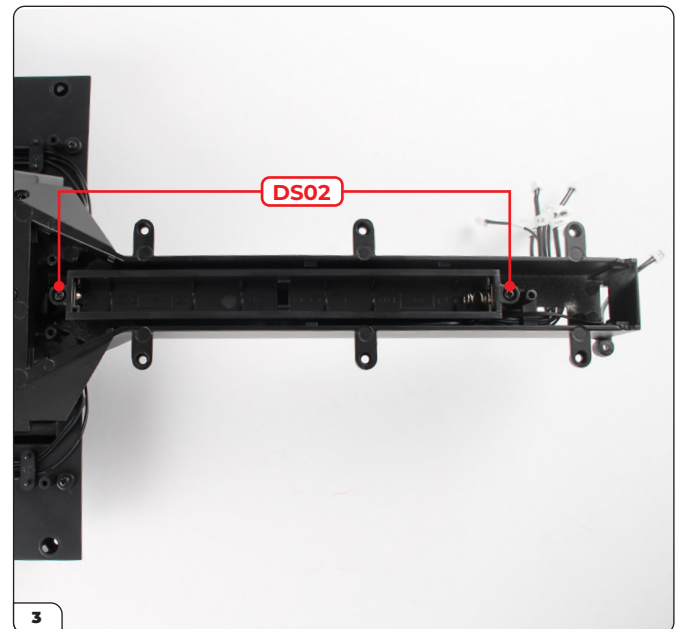
Stage 044: Installing the Battery Compartment and Circuit Board



Take the chassis assembly (stage 035) and place it on your work surface. Align the battery compartment (44-A) with the wire (No. 14) towards the front as shown. Push the wire plug through the opening at the end (1a).

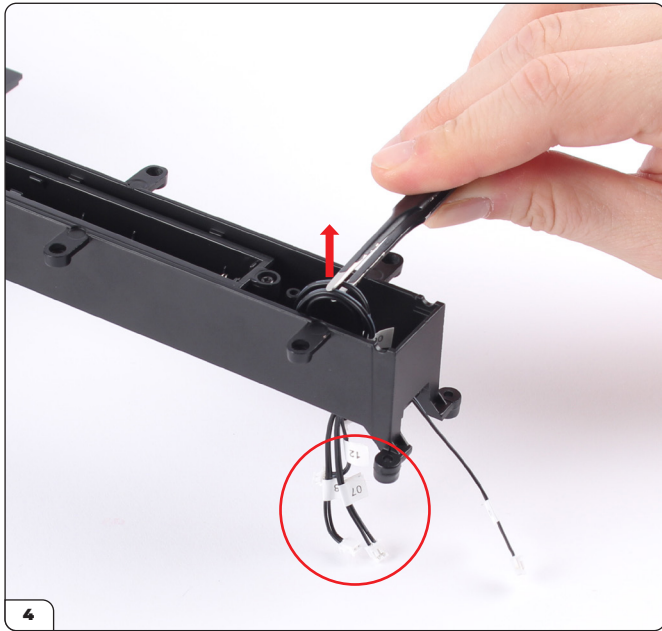


Position the battery compartment onto the screw posts.

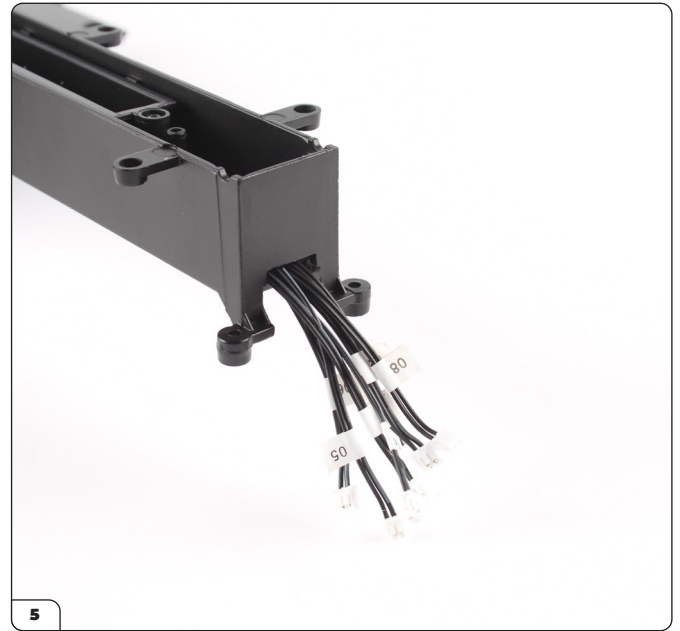


Secure with 2x DS02 screws.

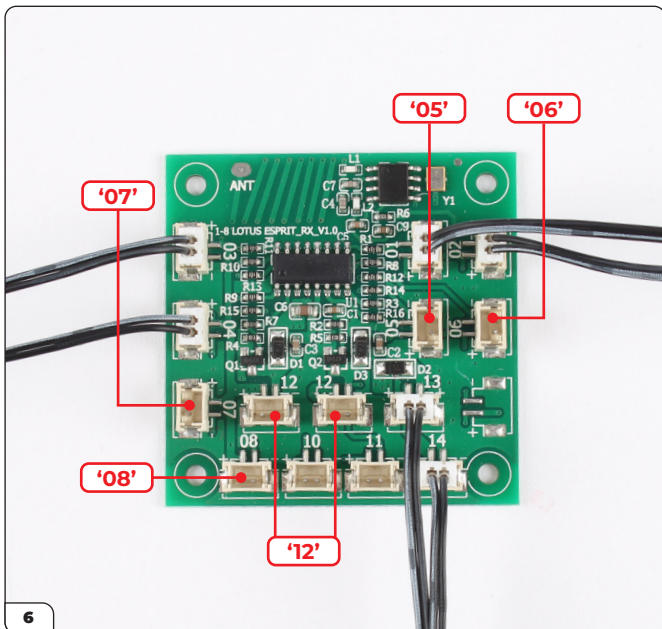
Stage 044: Installing the Battery Compartment and Circuit Board



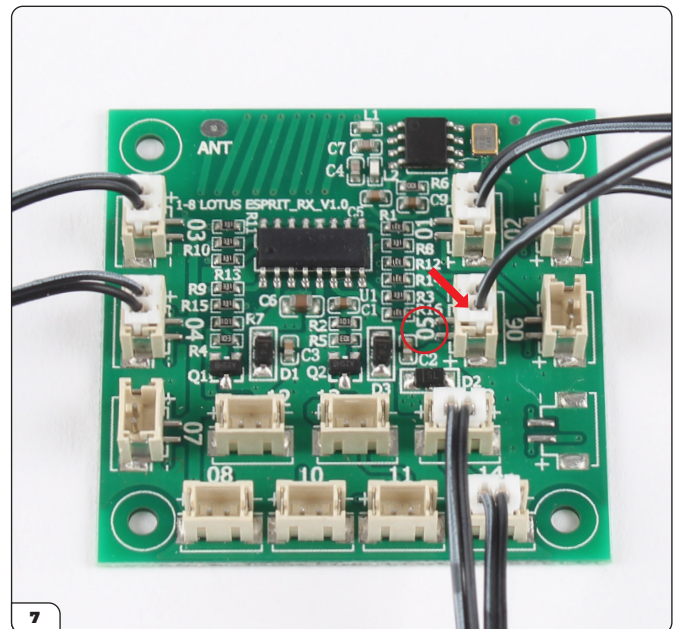
Carefully pull the other wires (from Stage 032) out from the opening.



Push the other wires through the same opening as battery compartment wire (No. 14).

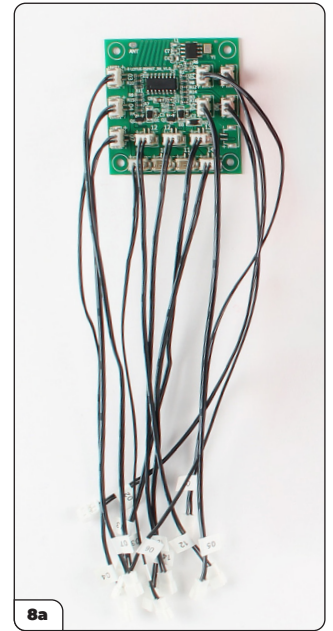
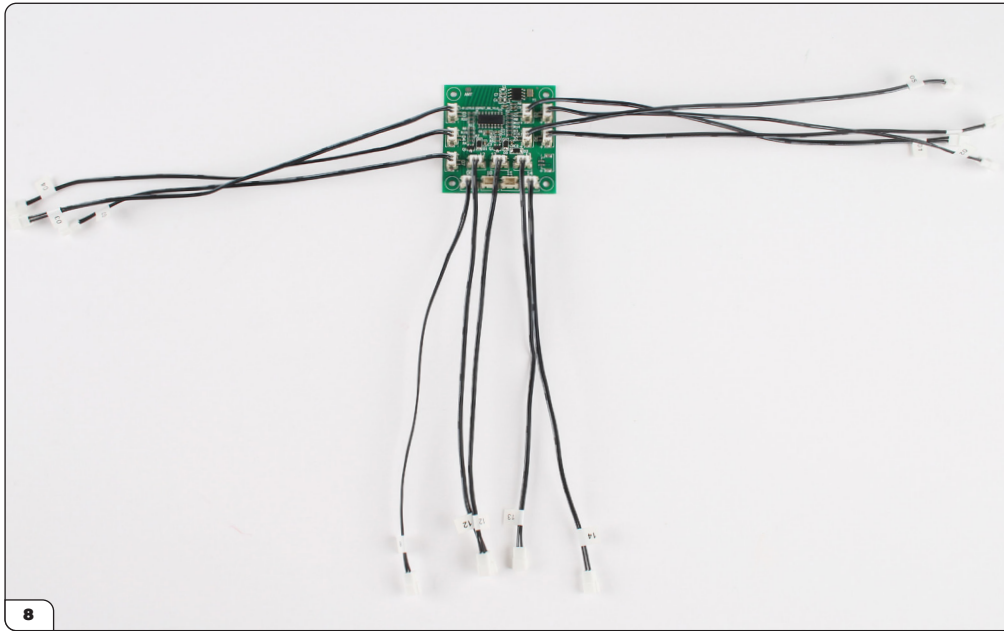


Take the circuit board (stage 043). You'll now plug the wires from this stage into the corresponding sockets.

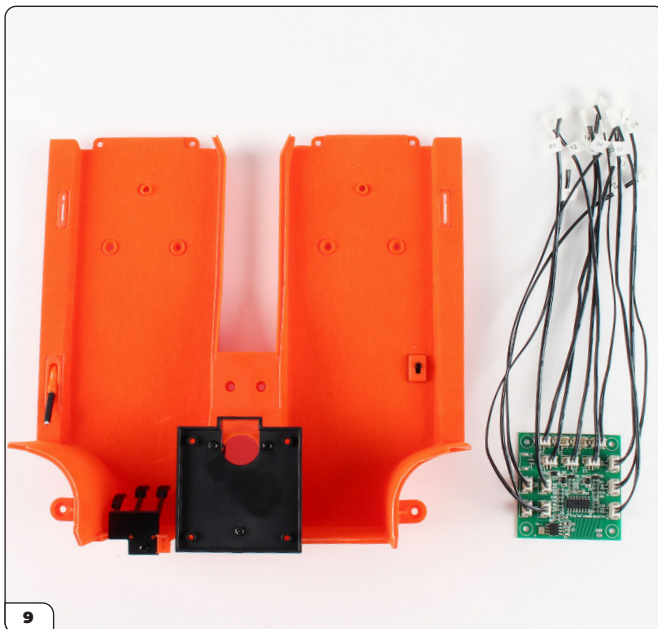


Plug wire No. 05 into the socket marked '05'.

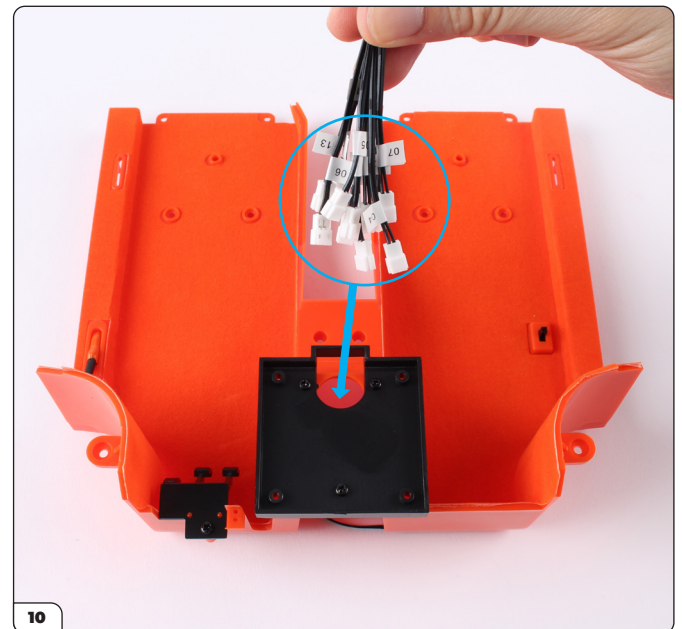
Stage 044: Installing the Battery Compartment and Circuit Board



Continue to plug the wires No. 06, 07, 08 and two 12s into the corresponding sockets, then gather the wires together as shown in image 8a.

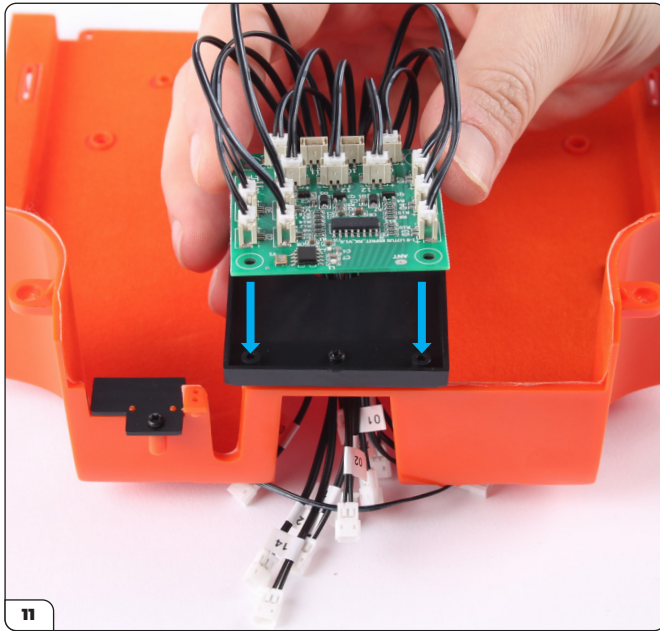


Place the cockpit floor(stage 044) on your work surface. Align the circuit board with it as shown.

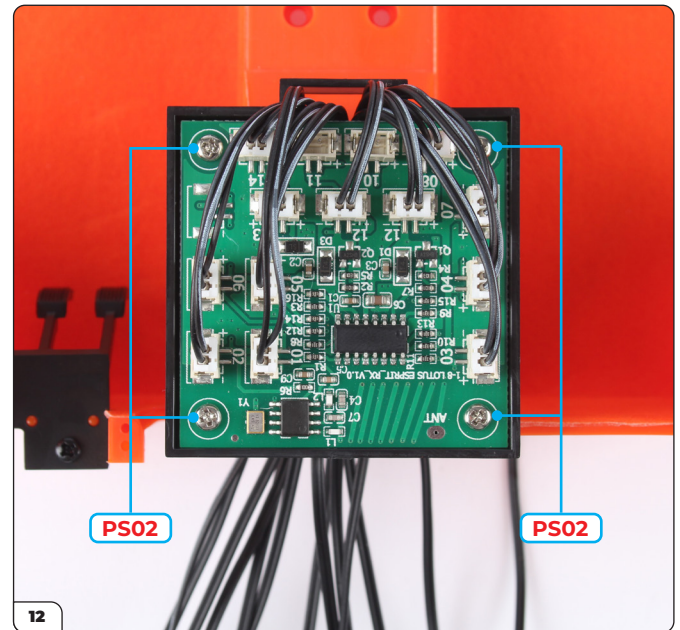


Push the wire plugs through the opening in the circuit board holder.

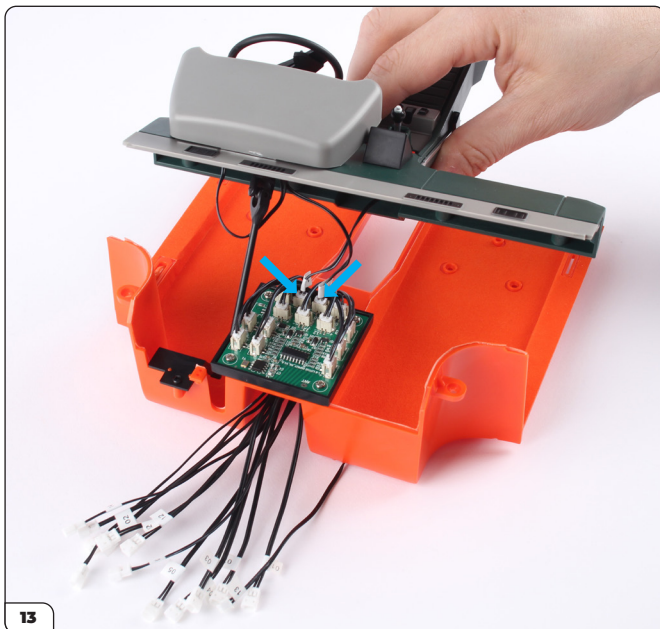
Stage 044: Installing the Battery Compartment and Circuit Board



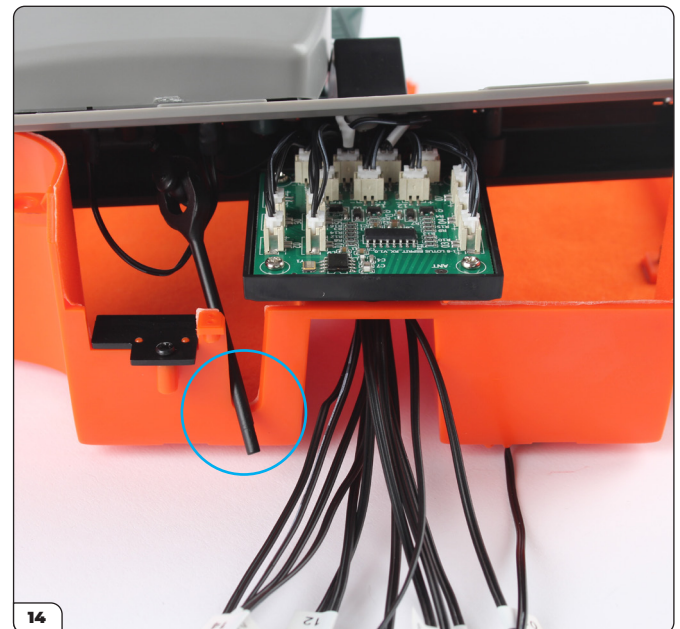
Position the circuit board onto the circuit board holder in the orientation shown.



Make sure the wires are not trapped beneath. Secure in place with 4x PS02 screws.

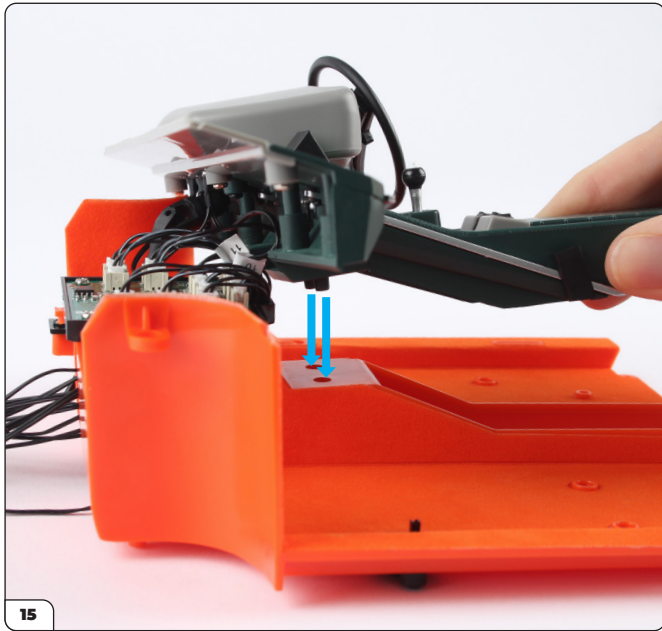


Next take the dashboard assembly (stage 041) and align it as shown. Plug the wires No. 10 and 11 into the corresponding sockets.

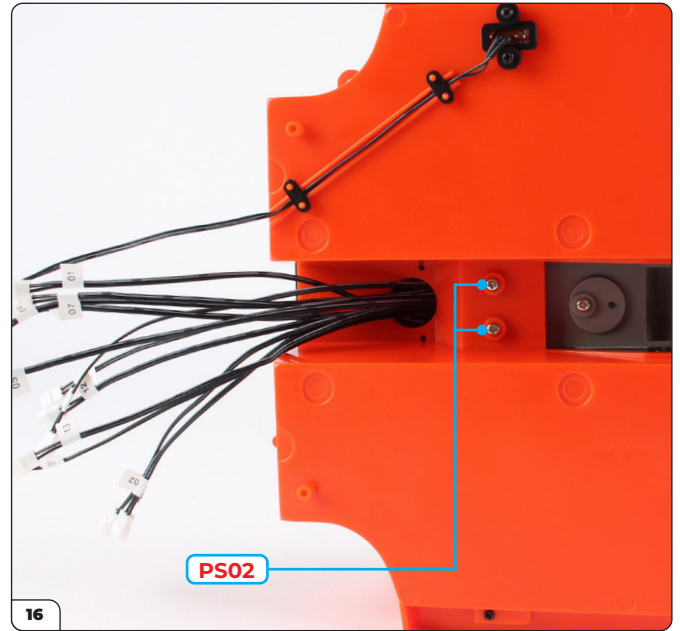


Position the steering column in the opening (circled). Carefully pull the wires tight through the opening in the circuit board holder so that the dashboard can fit in place easily.

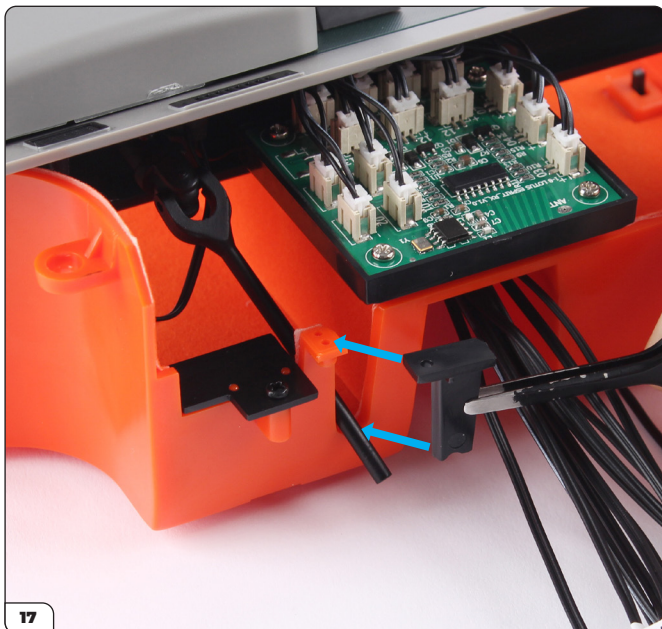
Stage 044: Installing the Battery Compartment and Circuit Board



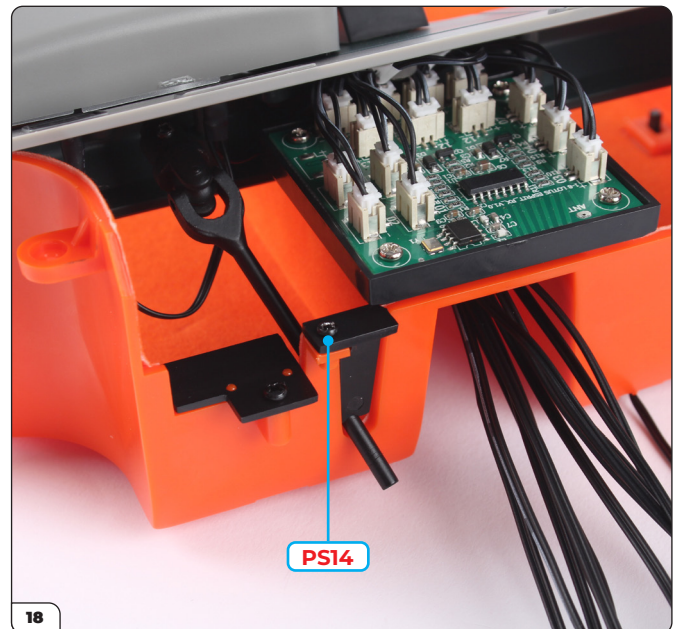
15 Push the dashboard into the two screw holes.



16 Secure from underneath with 2x PS02 screws.



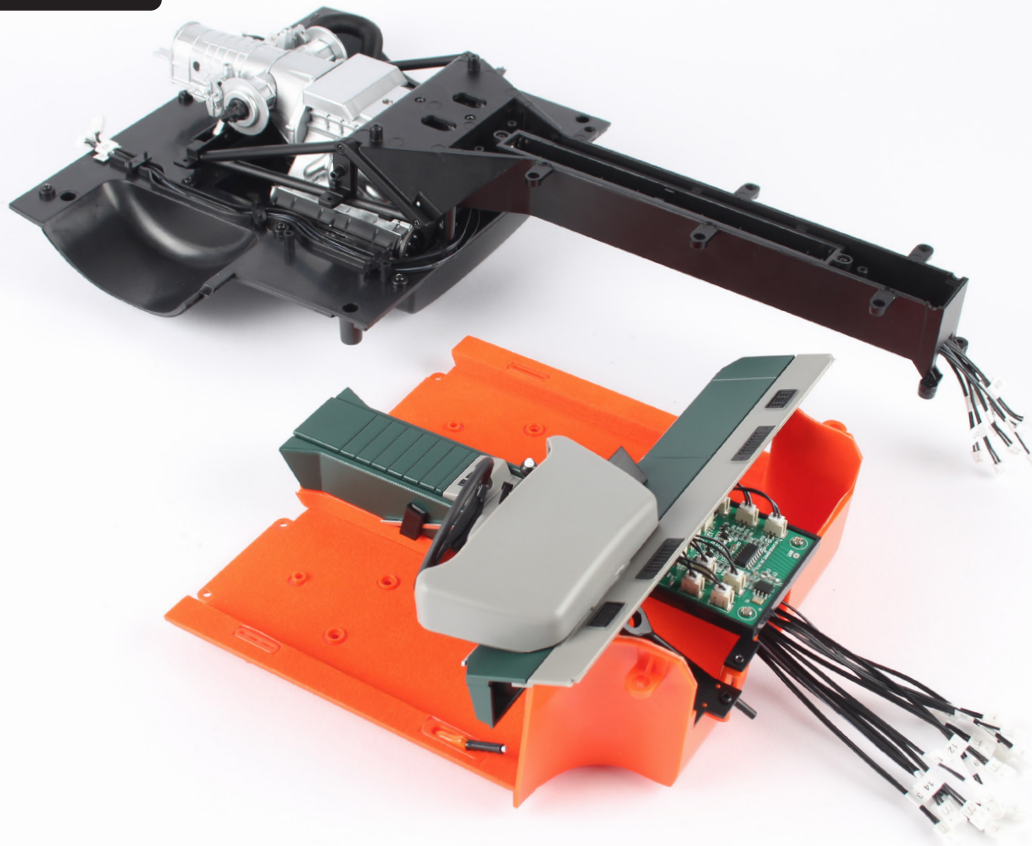
17 Place the steering column bracket in position.



18 Secure with a PS14 screw.

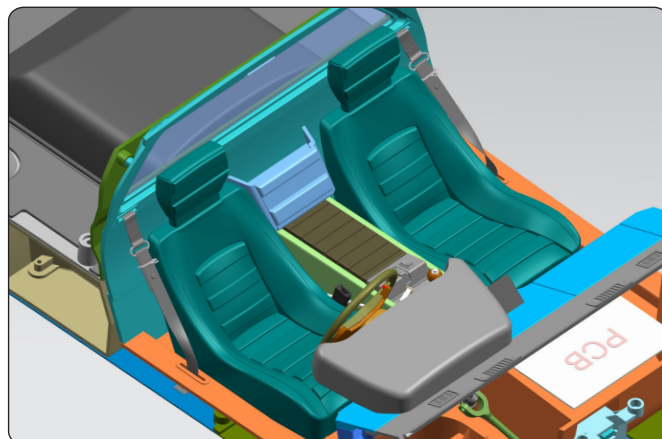
Stage 044: Installing the Battery Compartment and Circuit Board

STAGE COMPLETE



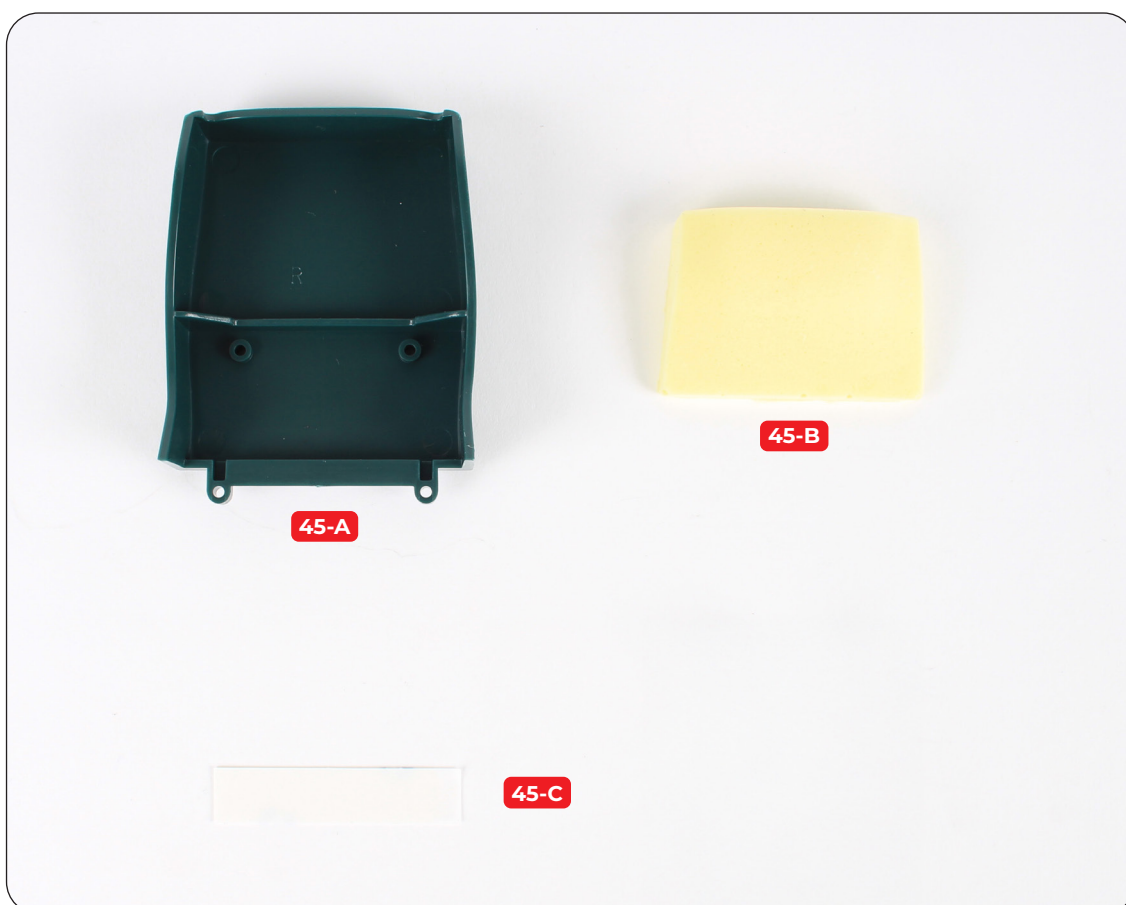
Stage 045: Fitting the Seat Cushion

In this stage you'll start to build the second seat, beginning with the seat cushion.



STAGE 045 PARTS LIST

Name
45-A Seat
45-B Seat cushion
45-C Double-sided tape



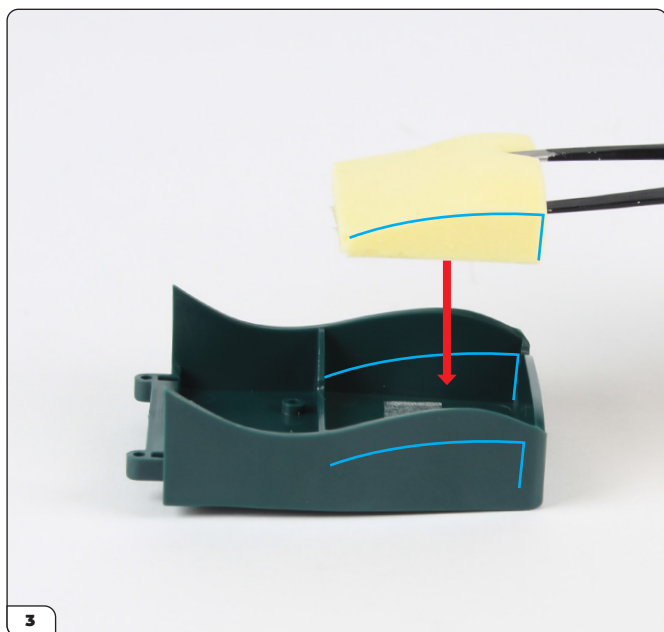
Stage 045: Fitting the Seat Cushion



Take the double-sided tape (45-C), remove one side of the backing paper then stick it onto the seat (45-A).



Peel away the remaining backing paper.



Align the seat cushion (45-B) so that the shape matches the curve of the seat.



Press the cushion firmly in place.

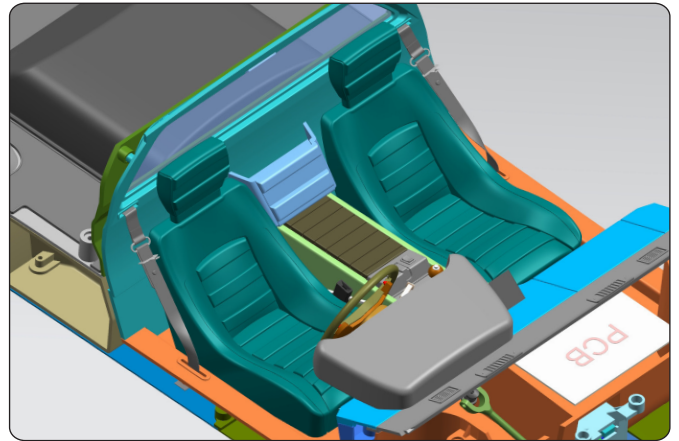
Stage 045: Fitting the Seat Cushion

STAGE COMPLETE



Stage 046: Fitting the Backrest Cushion and Assembling the Seat

Continue to build the seat by fitting the cushion to the backrest and joining the seat and backrest together.

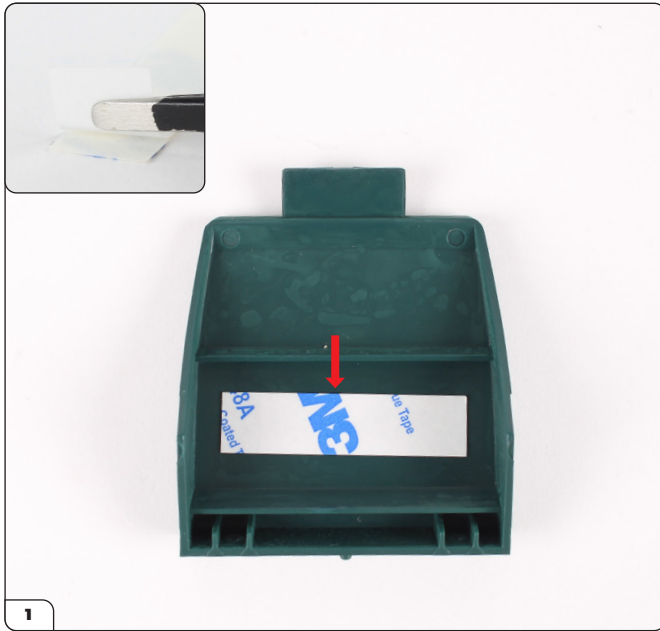


STAGE 046 PARTS LIST

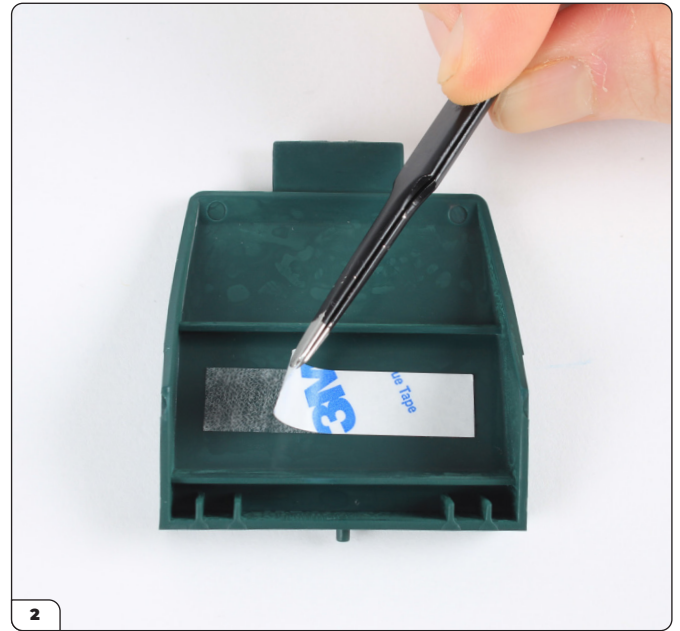
Name
46-A Backrest
46-B Backrest cushion
46-C Double-sided tape
PS05 screws x3



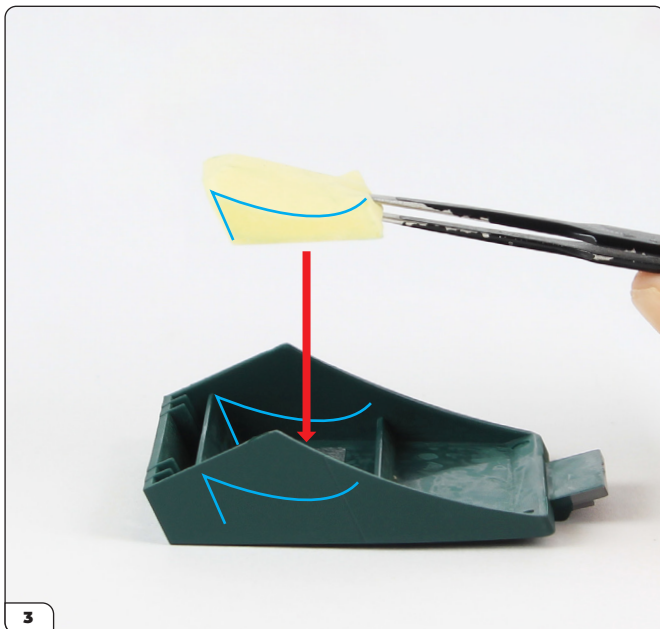
Stage 046: Fitting the Backrest Cushion and Assembling the Seat



Take the double-sided tape (46-C) and peel one side of the backing paper from it. Stick it onto the seat backrest (46-A) as shown.



Peel away the other side of the backing paper.

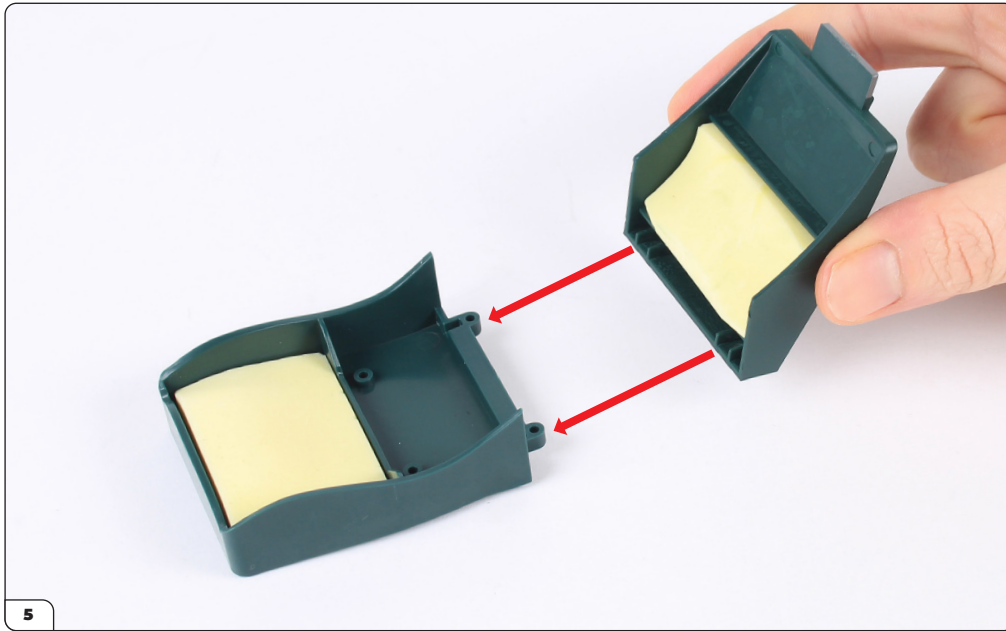


Align the seat backrest cushion (46-B) so that the shape matches the curve of the backrest.



Press the cushion firmly in place.

Stage 046: Fitting the Backrest Cushion and Assembling the Seat



Align the backrest with the seat as shown.



Fit the backrest then secure from underneath using 2x PS05 screws.

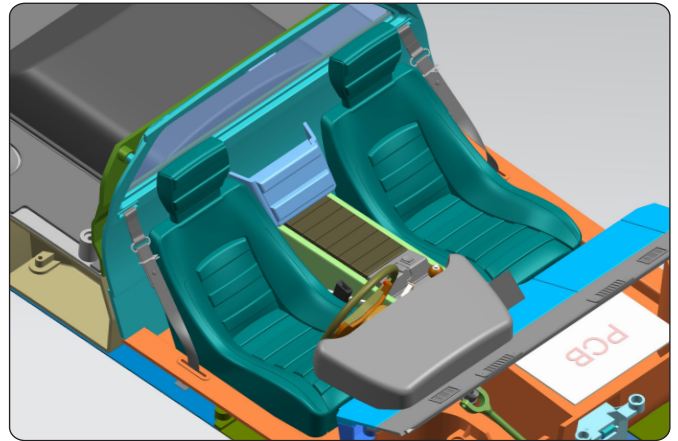
Stage 046: Fitting the Backrest Cushion and Assembling the Seat

STAGE COMPLETE



Stage 047: Fitting the Seat Cover and the Seats

In this stage you'll finish the second seat by fitting the cover in place. You'll then fix both seats onto the cockpit floor.



STAGE 047 PARTS LIST

Name
47-A Seat cover
PS05 screws x5



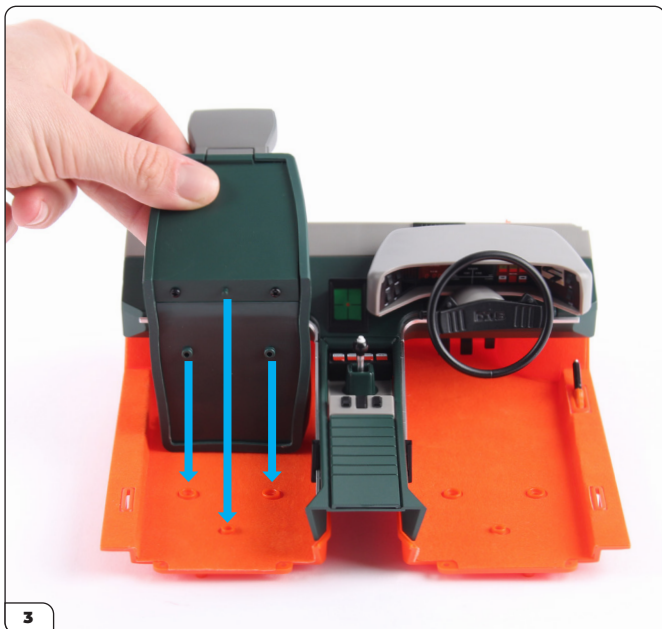
Stage 047: Fitting the Seat Cover and the Seats



1
Align the seat cover (47-A) with the seat assembly.



2
Fit the cover onto the seat.



3
Position the seat onto the left-hand side of the cockpit floor assembly (stage 044).



4
The seat should look like this once in place.

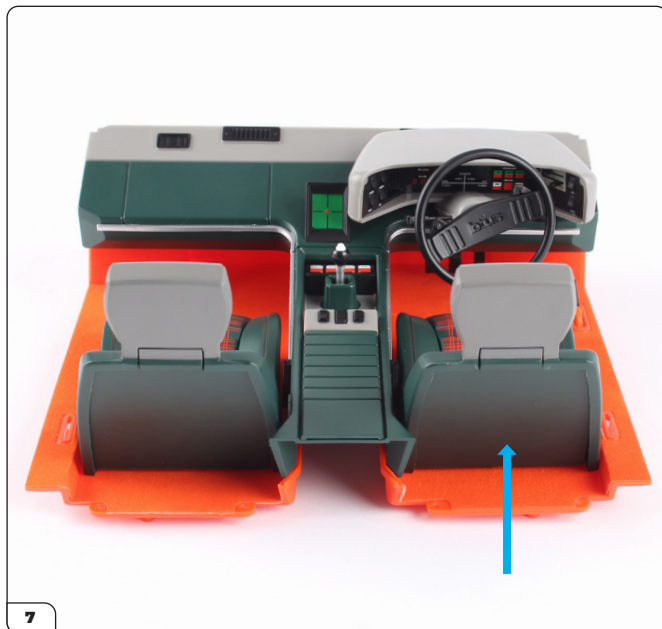
Stage 047: Fitting the Seat Cover and the Seats



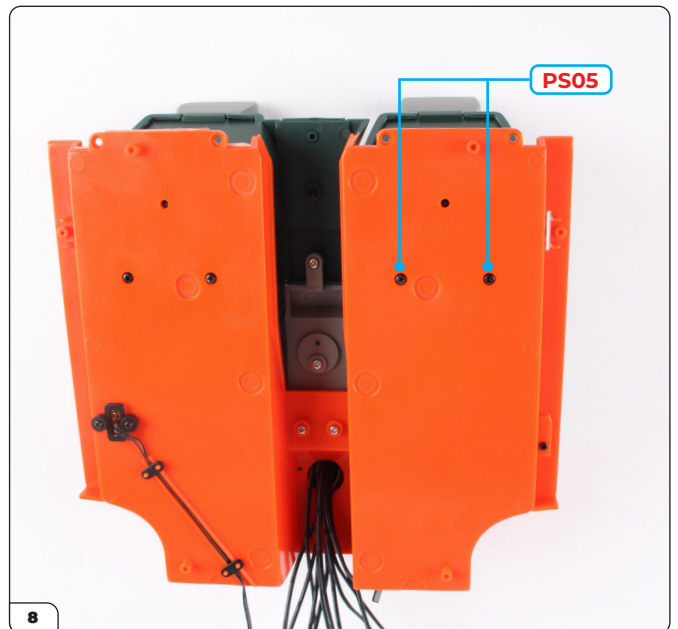
Secure with 2x PS05 screws.



Take the other seat from stage 009.



Position it on the right-hand side.



Secure with 2x PS05 screws.

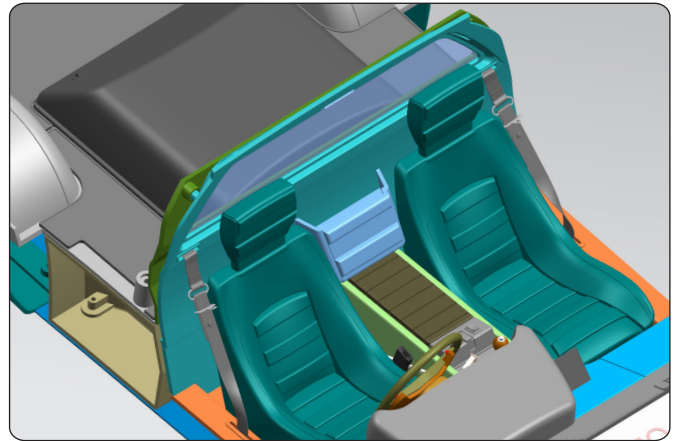
Stage 047: Fitting the Seat Cover and the Seats

STAGE COMPLETE



Stage 048: Attaching the Bulkhead

In this stage you'll attach the bulkhead to the rear of the cockpit and fit the transmission tunnel cover.



STAGE 048 PARTS LIST

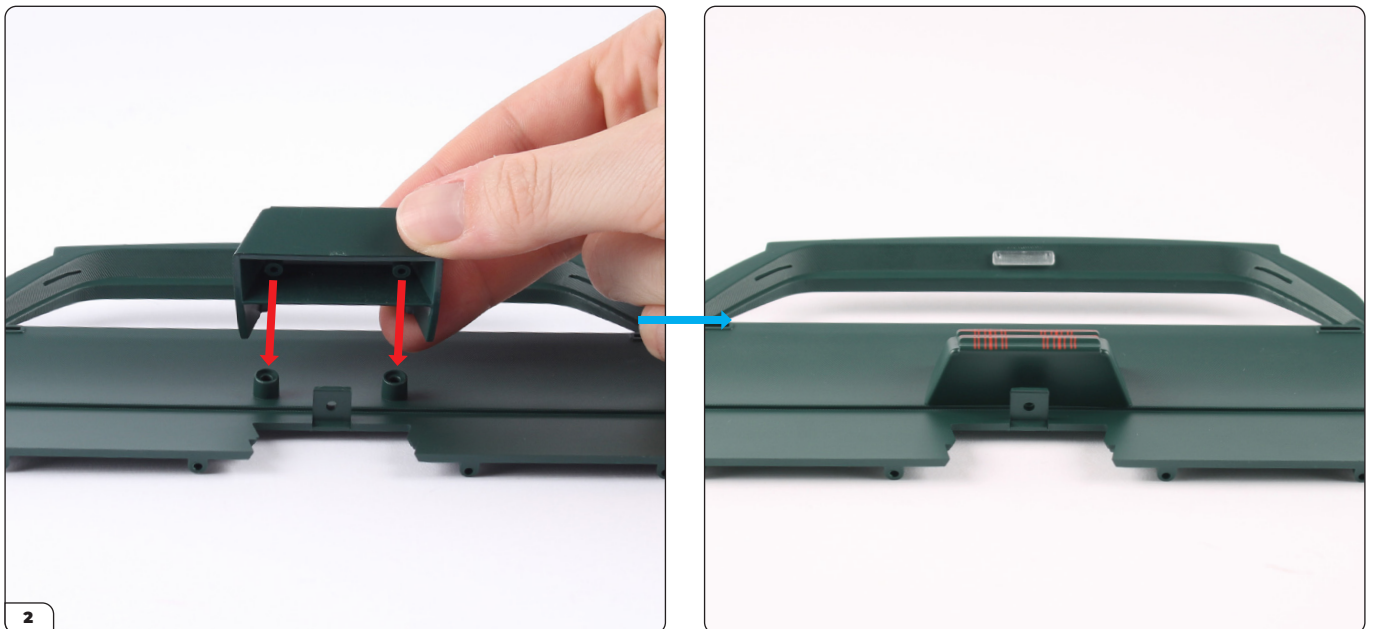
Name
48-A Bulkhead
48-B Transmission tunnel cover
48-C Interior light
PS05 screws x8



Stage 048: Attaching the Bulkhead



Take the bulkhead (48-A) and the interior light (48-C). Press the interior light into the bulkhead, aligning the parts as shown in the inset image.



Take the transmission tunnel cover (48-B) and position it onto the two screw posts.

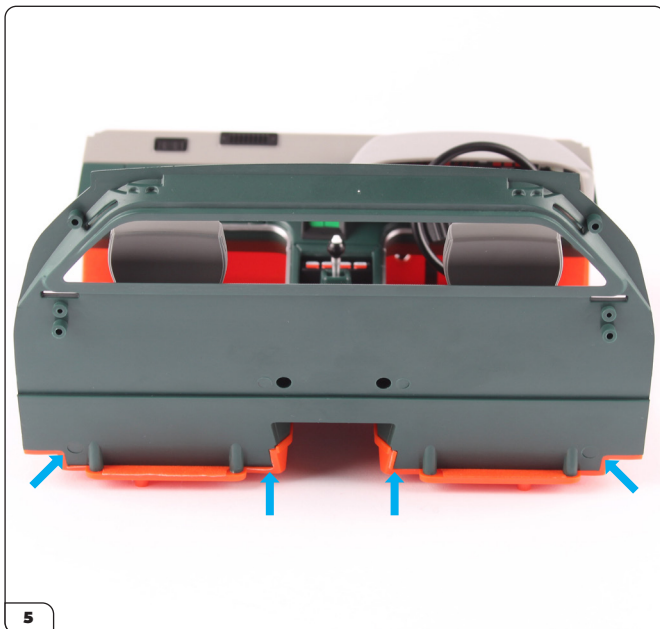
Stage 048: Attaching the Bulkhead



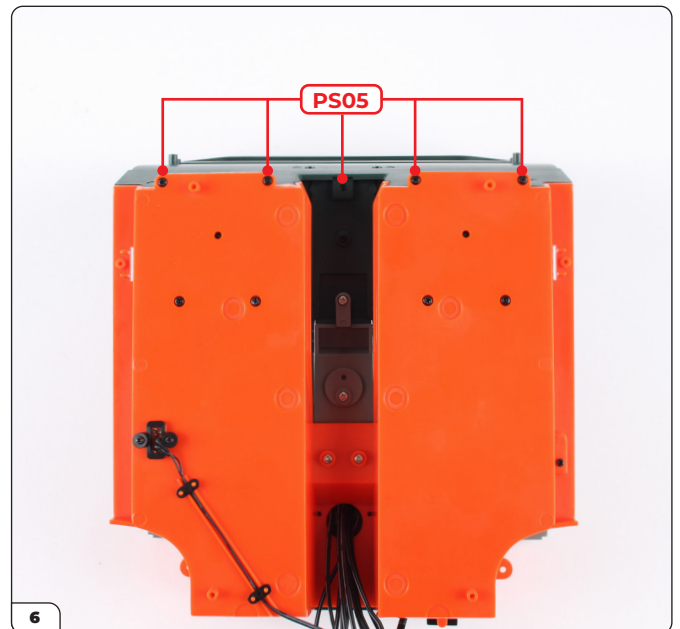
Secure from the other side with 2x PS05 screws.



Position the bulkhead onto the cockpit assembly (stage 047).



Check that the bulkhead and the floor are fitted together correctly. The edges should be flush.



Secure with 5x PS05 screws.

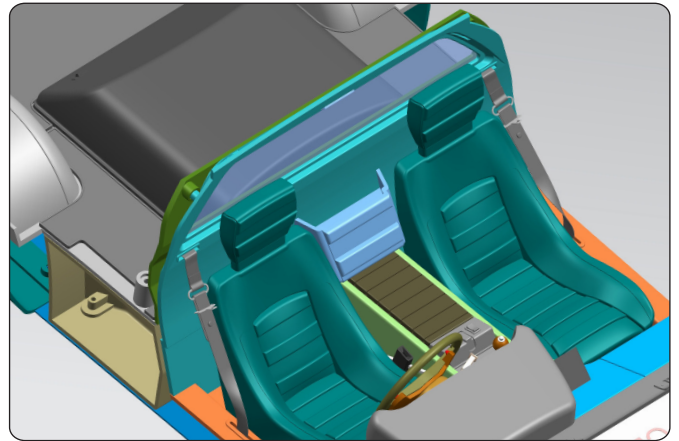
Stage 048: Attaching the Bulkhead

STAGE COMPLETE



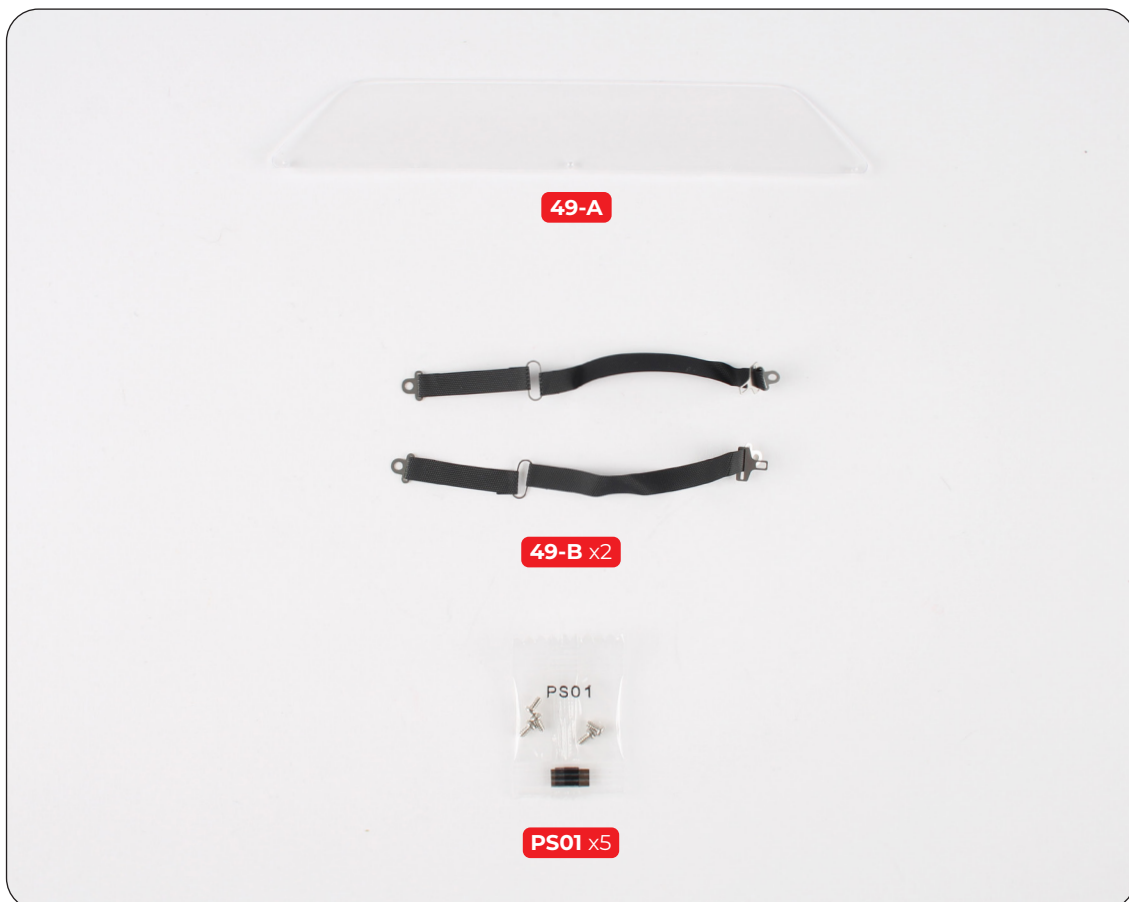
Stage 049: Adding the Seat Belts

Next you'll add the seat belts by attaching them to the bulkhead and cockpit floor.



STAGE 049 PARTS LIST

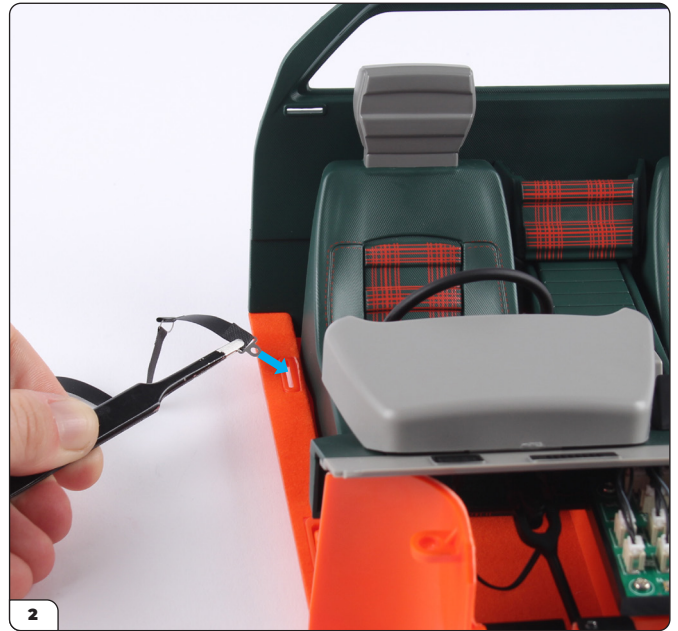
Name
49-A Bulkhead glass
49-B Seat belt x2
PS01 screws x5



Stage 049: Adding the Seat Belts



Take the cockpit assembly (stage 048). When fitting the seat belts, the longer end fits into the bulkhead and the shorter end fits into the cockpit floor.



Push the short end of the seat belt through the opening in the cockpit floor. Check that the buckle on the seat belt will face inwards once the upper section of the seat belt has been attached (see image step 6).



Position the seat belt end over the screw post and secure it using a PS01 screw.



Fit the long end of the seat belt through the opening in the bulkhead.

Stage 049: Adding the Seat Belts



Position the seat belt end over the screw post and secure it using a PS01 screw.



The seat belt should look like this once in place.



Repeat these steps on the other side to fit the second seat belt, securing with 2x PS01 screws in the same way.

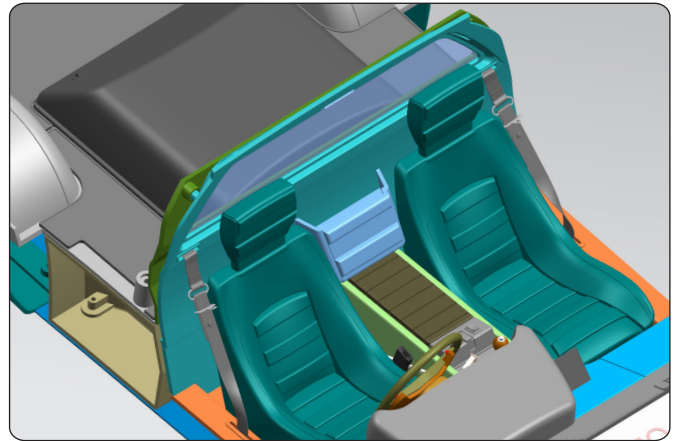
Stage 049: Adding the Seat Belts

STAGE COMPLETE



Stage 050: Fitting the Bulkhead Glass Frame

In this stage you'll add the bulkhead glass by fitting the frame.

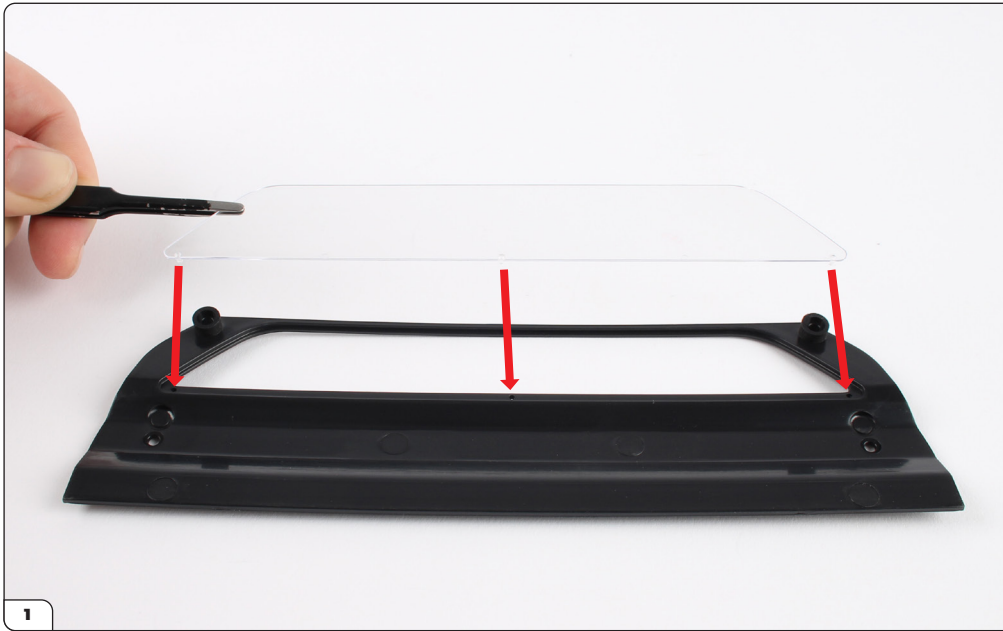


STAGE 050 PARTS LIST

Name
50-A Bulkhead glass frame
PS05 screws x5



Stage 050: Fitting the Bulkhead Glass Frame



Take the bulkhead glass (stage 049) and press it into the bulkhead glass frame (50-A).



Make sure the glass is pressed fully into the frame.

Stage 050: Fitting the Bulkhead Glass Frame

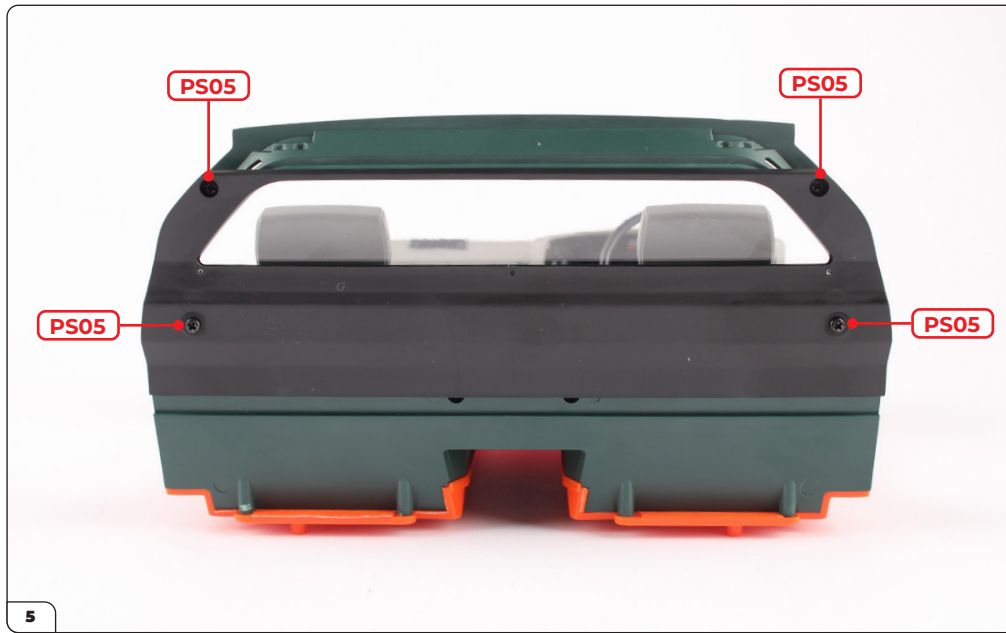


Align the bulkhead glass frame with the bulkhead (stage 049).



Press into place.

Stage 050: Fitting the Bulkhead Glass Frame



Secure with 4x PS05 screws.

