

**THE
SPY WHO
LOVED
ME™**

LOTUS
esprit



Pack 07

BUILD INSTRUCTIONS

**STAGE 051: FITTING THE LEFT DOOR
HANDLE AND LOCK MECHANISM**

**STAGE 052: FITTING THE LEFT DOOR
WINDOW AND HINGE**

**STAGE 053: BUILDING THE LEFT DOOR
INTERIOR PANEL**

STAGE 054: ASSEMBLING THE LEFT DOOR

STAGE 055: PREPARING THE FRONT BODY

STAGE 056: BUILDING THE BRAKE SERVO

**STAGE 057: FITTING THE DUAL AIR INTAKE
AND WASHER FLUID RESERVOIR**

THE SPY WHO LOVED ME © Danjaq, LLC and Metro-Goldwyn-Mayer Studios Inc. THE SPY WHO LOVED ME, *007*™ and related James Bond Indicia © 1962-2024 Danjaq, LLC and Metro-Goldwyn-Mayer Studios Inc. THE SPY WHO LOVED ME, *007*™ and related James Bond Trademarks are trademarks of Danjaq, LLC. All Rights Reserved. Produced under licence from Group Lotus LTD. LOTUS, the Lotus Roundel, car names and all associated logos and distinctive designs are trade marks of Group Lotus LTD.

Advice from the experts

Spare screws are included with each part. Occasionally, you may be instructed to keep spare or unused screws for a later stage. Keep these spares in a safe place and label them correctly.

Please make sure you don't mix up the screws. They look quite similar, but the threads do vary slightly. Using the wrong screws may damage the parts.

When securing parts together using multiple screws, fit each screw loosely to ensure all the parts are correctly aligned before gently tightening them firmly, but not overtight, in the order in which you placed them.

The screwdriver can be magnetized by stroking it with a magnet (fridge magnet, etc.) enabling it to hold the screws and make assembly easier.

If a screw is tight going into a metal part, do not force it as you may shear the head off. Remove it and put a tiny smear of Vaseline, soap or light oil on the thread. That will lubricate it and make it easier to drive home.

During the course of this build, you will receive many pieces that you will assemble immediately – following the instructions in the corresponding stage – and other pieces that you should store safely to one side, for use in future assembly stages.

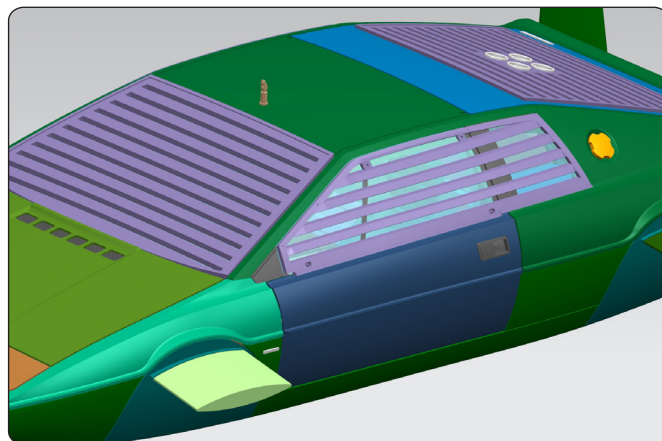
Left and Right! When building your *The Spy Who Loved Me* Lotus Esprit, the left- or right-hand side refers to that side as if you are sitting in the car.



WARNING: Some parts are assembled using magnets. These magnets can cause serious injury if they are swallowed. Keep away from children. If you suspect a magnet has been swallowed, seek medical help straight away.

Stage 051: Fitting the Left Door Handle and Lock Mechanism

Over the next four stages you'll assemble the left door. First you'll fit the door handle and build the lock mechanism.

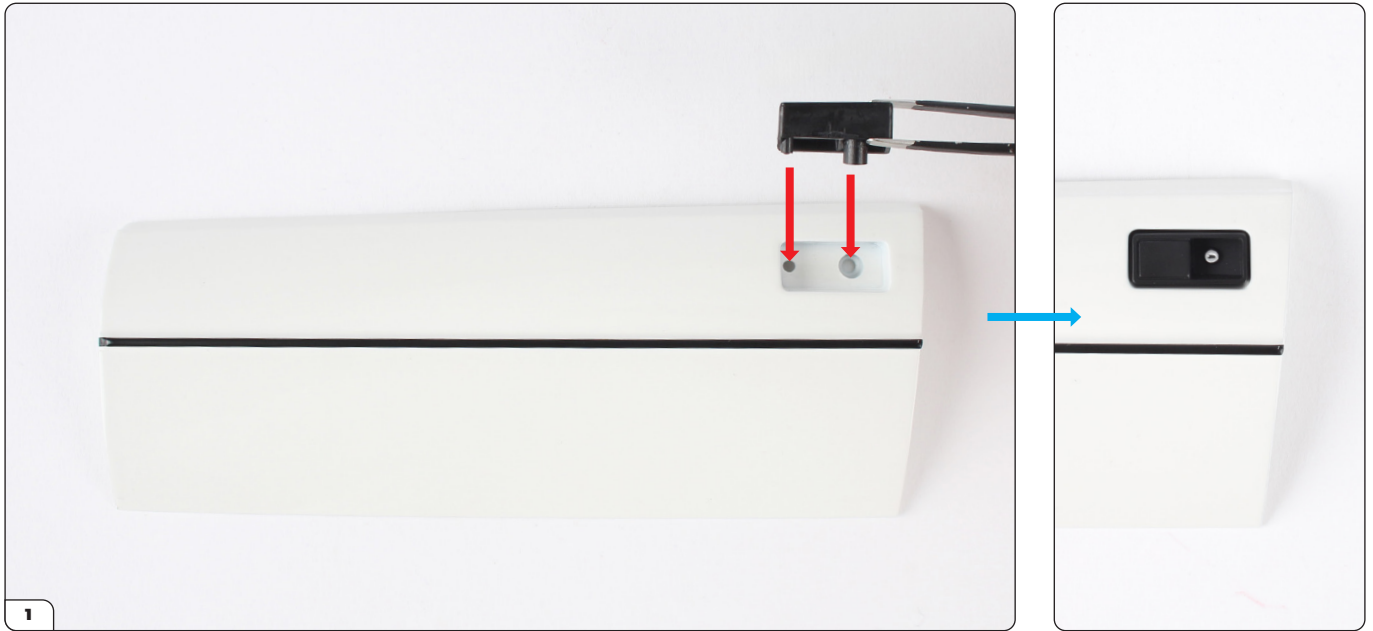


STAGE 051 PARTS LIST

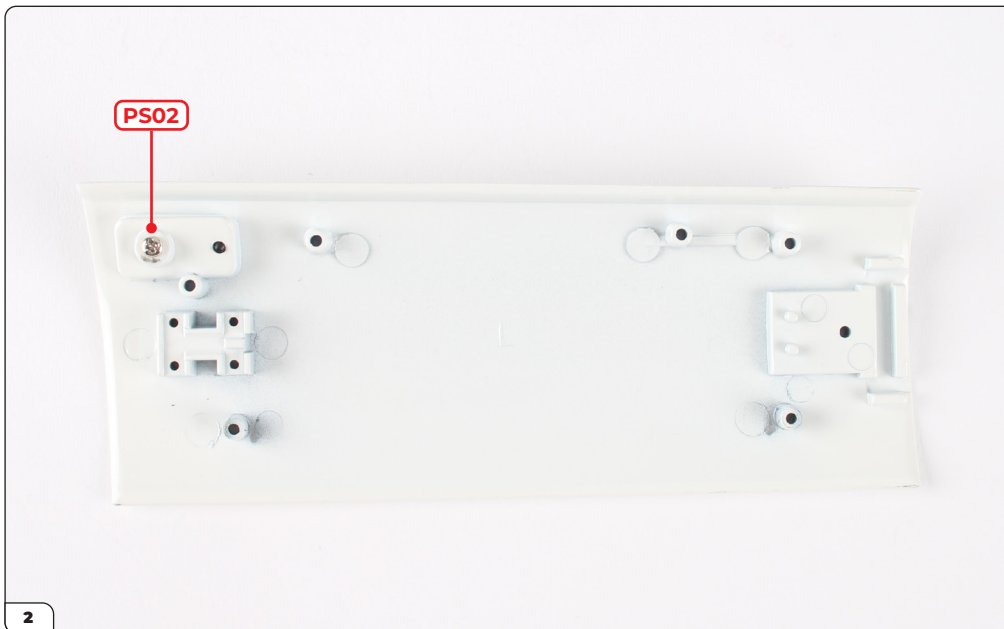
Name	Name
51-A Left door	PS02 screw x2
51-B Left door handle	DS06 screw x5
51-C Door lock	
51-D Door lock bracket	
51-E Door lock bracket	
51-F Spring	



Stage 051: Fitting the Left Door Handle and Lock Mechanism

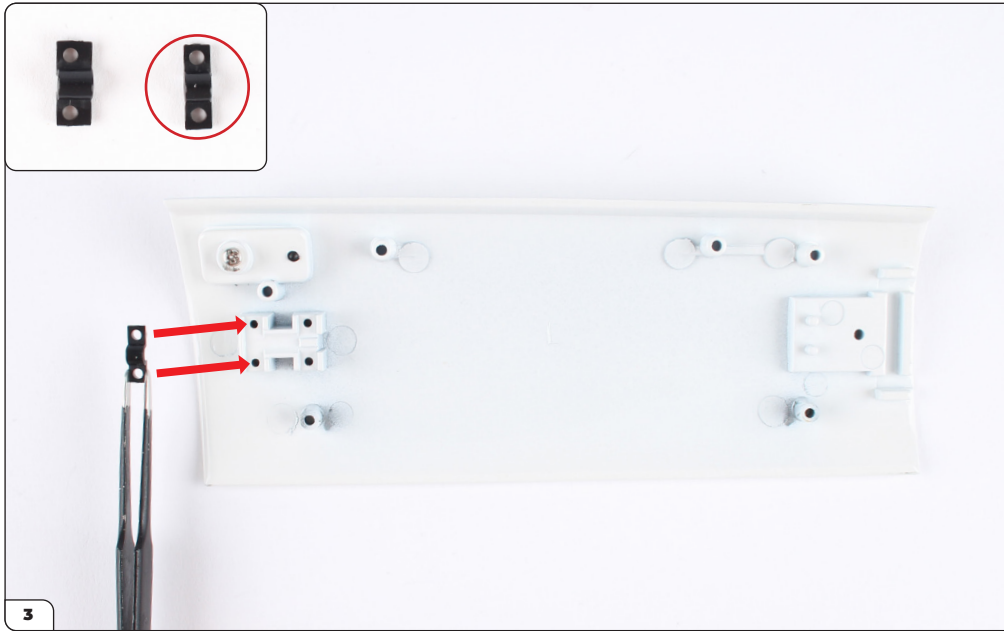


Take the left door (51-A) and push the handle (51-B) into the recess.



Secure from the other side with a PS02 screw.

Stage 051: Fitting the Left Door Handle and Lock Mechanism

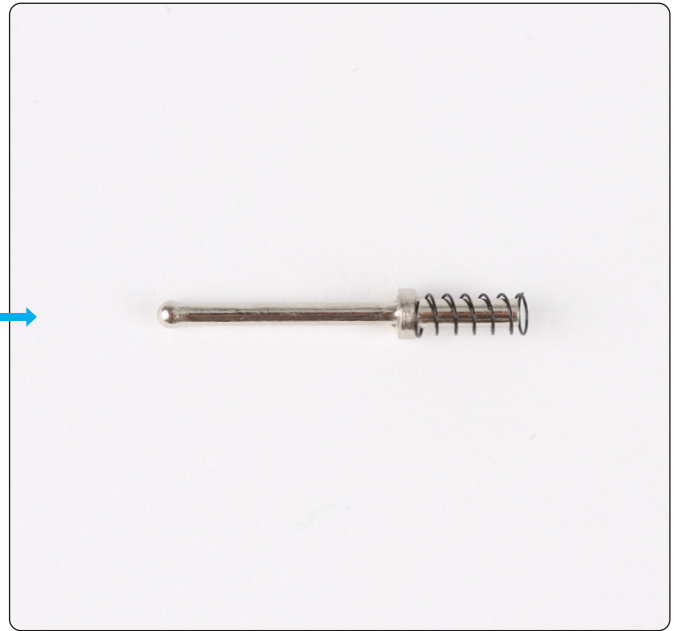
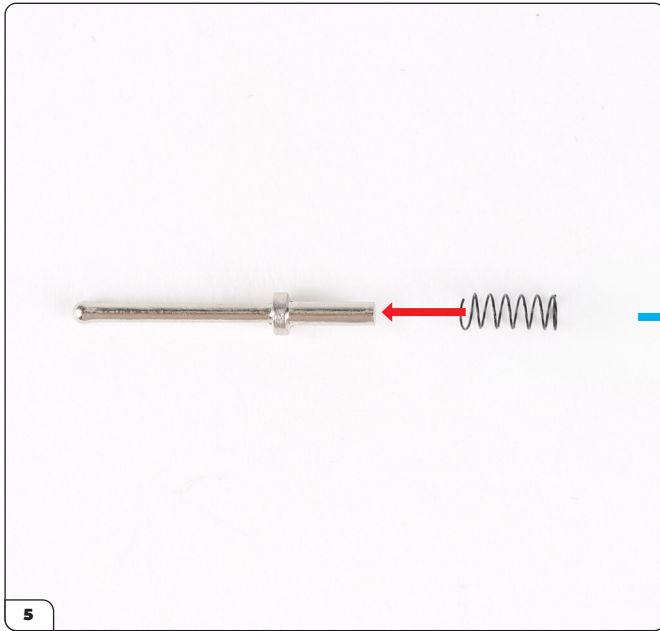


Place the door lock bracket (51-E, circled) into the recess.

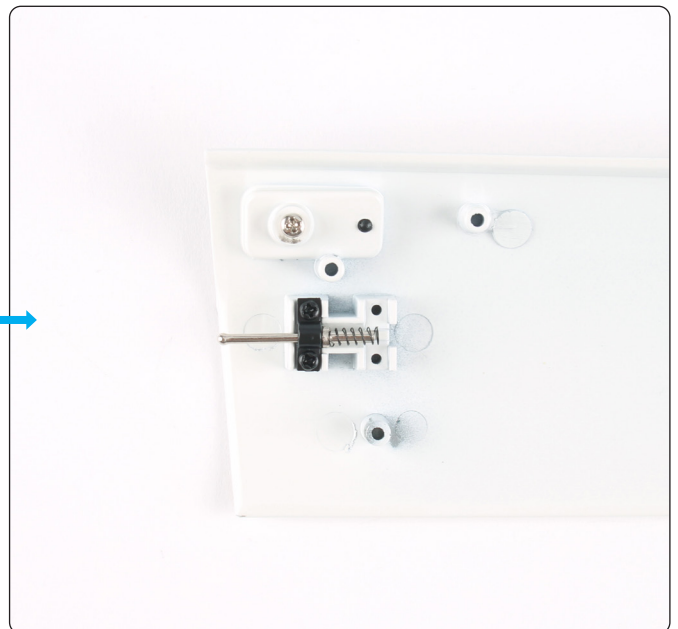
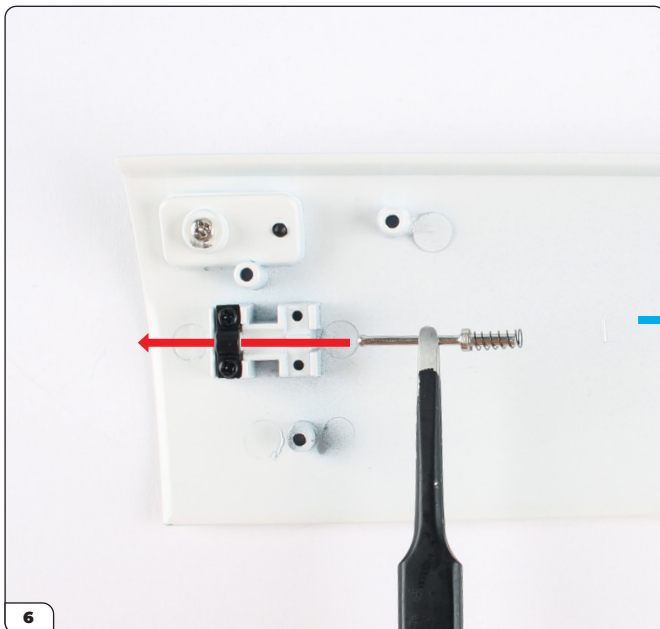


Secure with 2x DS06 screws.

Stage 051: Fitting the Left Door Handle and Lock Mechanism

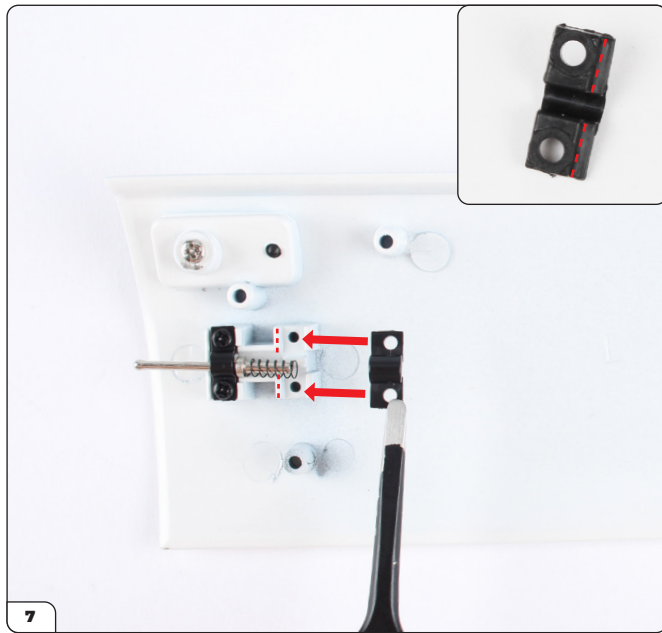


Position the spring (51-F) onto the shorter end of the door lock (51-C).

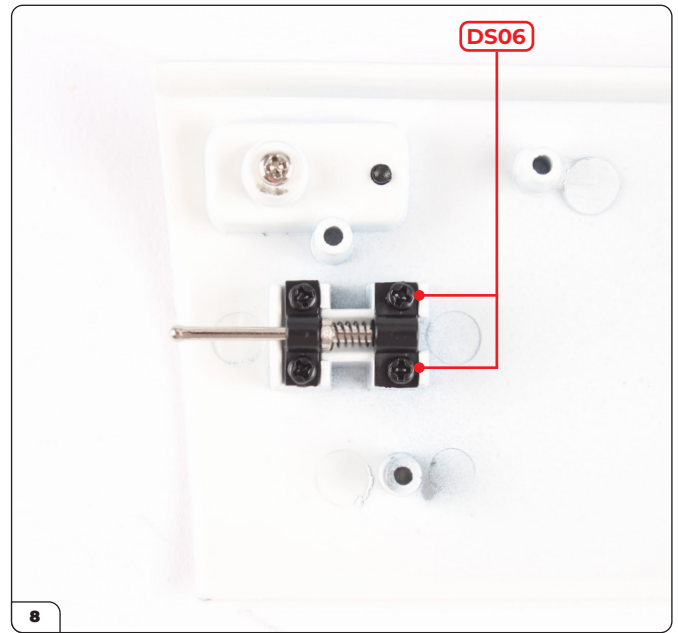


Push the longer end of the lock through the bracket as shown.

Stage 051: Fitting the Left Door Handle and Lock Mechanism



Position the bracket (51-D), compressing the spring against it at the same time. There is a recess on the bracket that fits over the ridge of the door as indicated by the dashed lines.

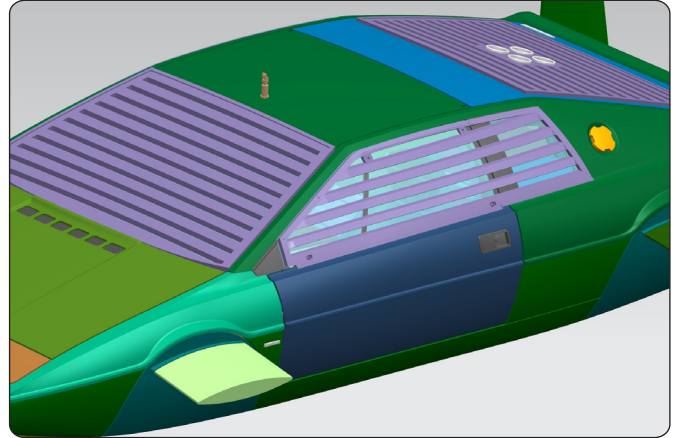


Secure with 2x DS06 screws.



Stage 052: Fitting the Left Door Window and Hinge

In this stage you'll continue building the left door by fitting the window and hinge.

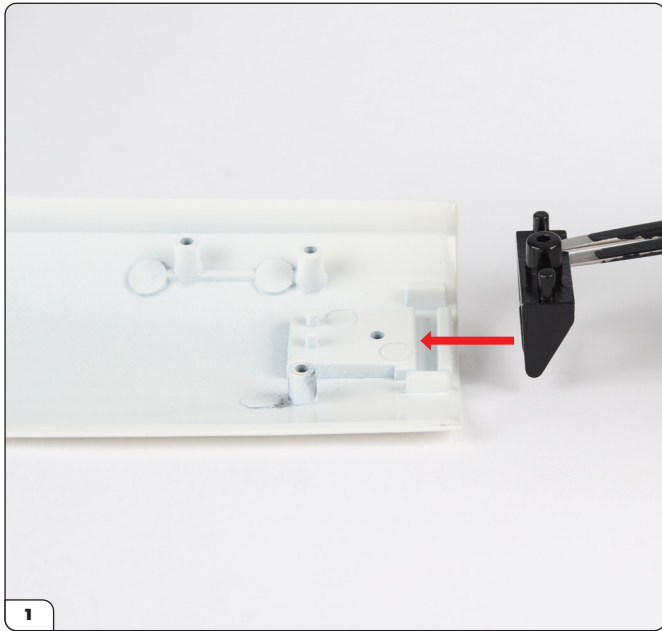


STAGE 052 PARTS LIST

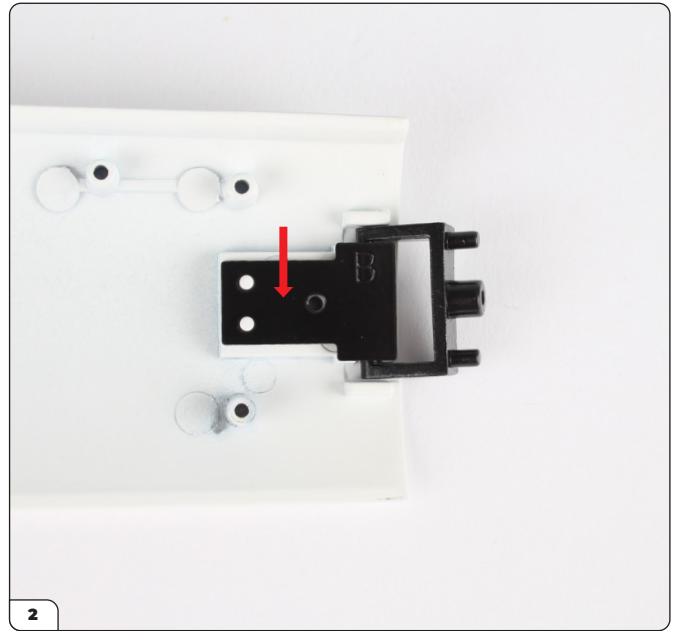
Name
52-A Left door window
52-B Door hinge mount
52-C Door hinge plate
DS05 screw x4



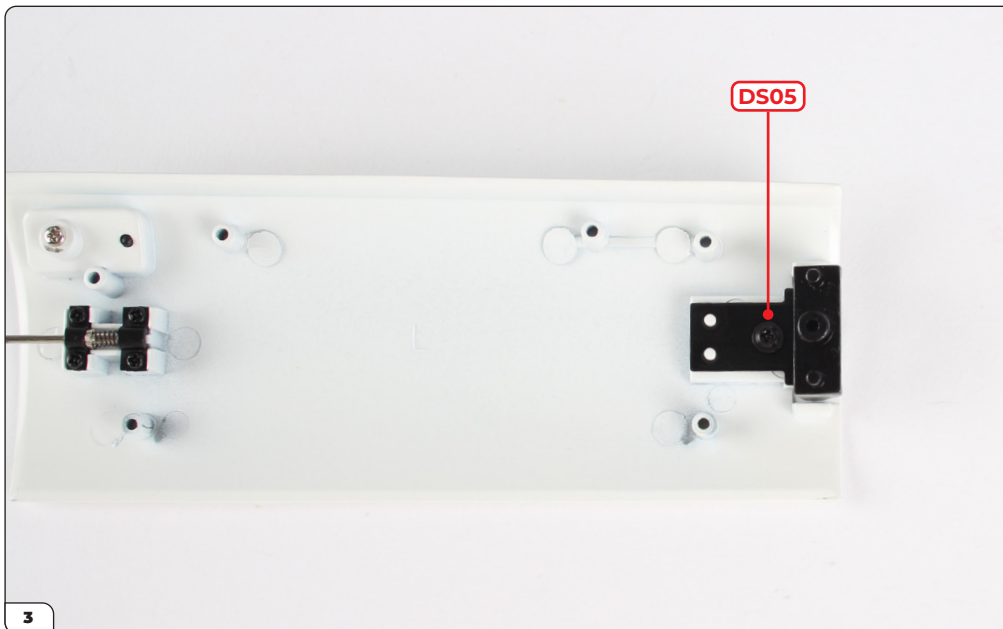
Stage 052: Fitting the Left Door Window and Hinge



Take the left door assembly (stage 051) and the door hinge mount (52-B). Align the mount with the recess as shown.

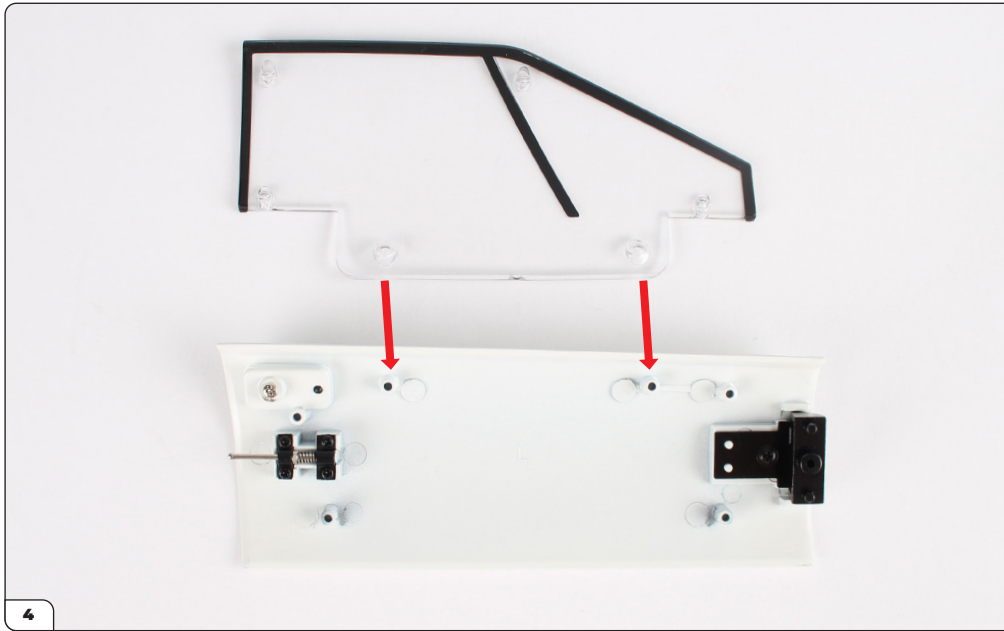


Position the mount then press the hinge plate (52-C) on top.

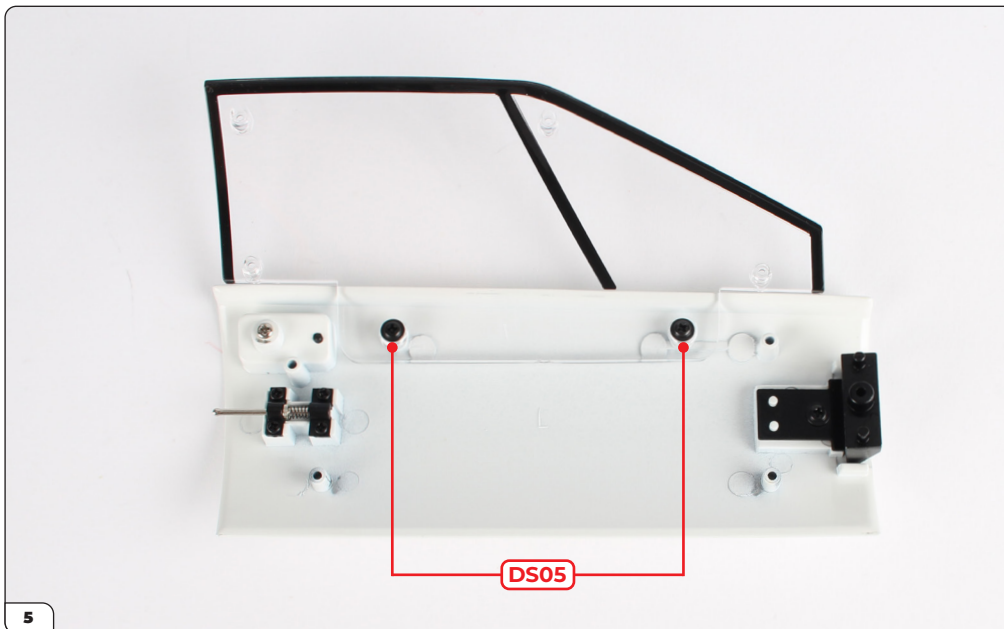


Secure in place using a DS05 screw. Make sure the screw is fully tightened.

Stage 052: Fitting the Left Door Window and Hinge



Align the left window (52-A) with the assembly as shown.



Position the window and secure it using 2x DS05 screws.

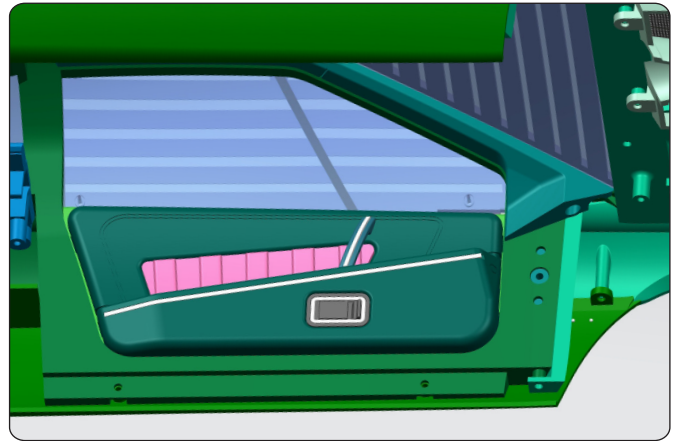
Stage 052: Fitting the Left Door Window and Hinge

STAGE COMPLETE



Stage 053: Building the Left Door Interior Panel

Next you'll build the interior panel by fitting the trim panel and the two handles.

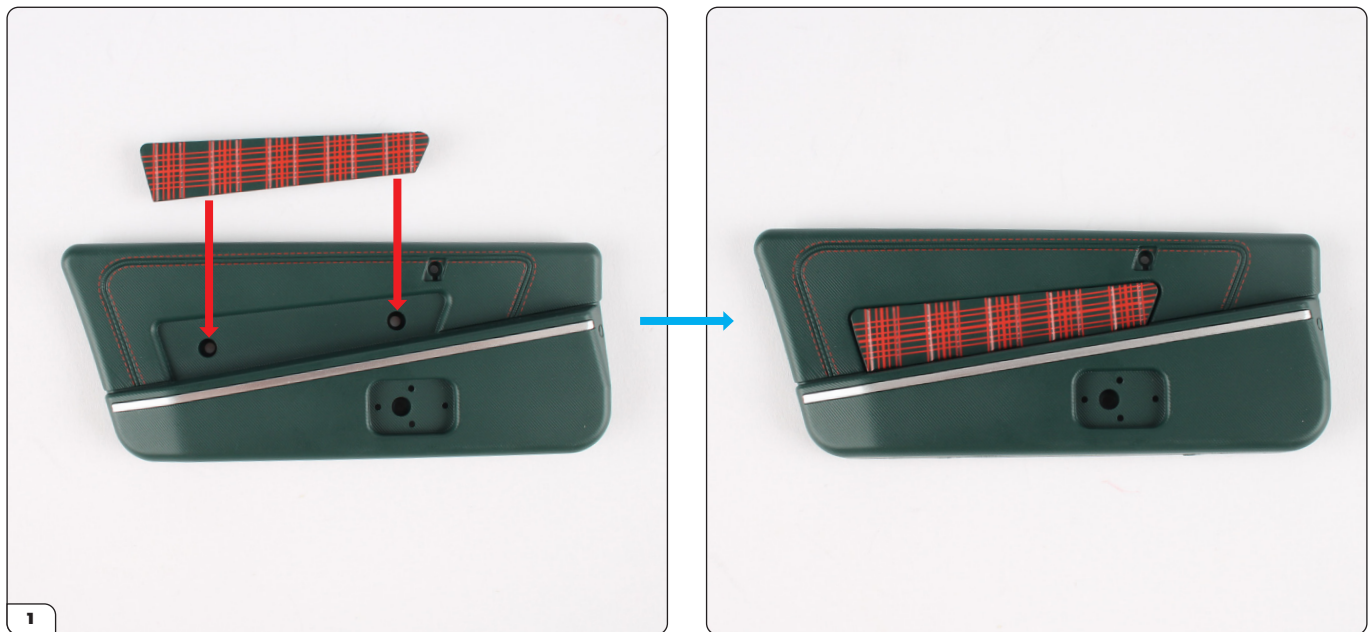


STAGE 053 PARTS LIST

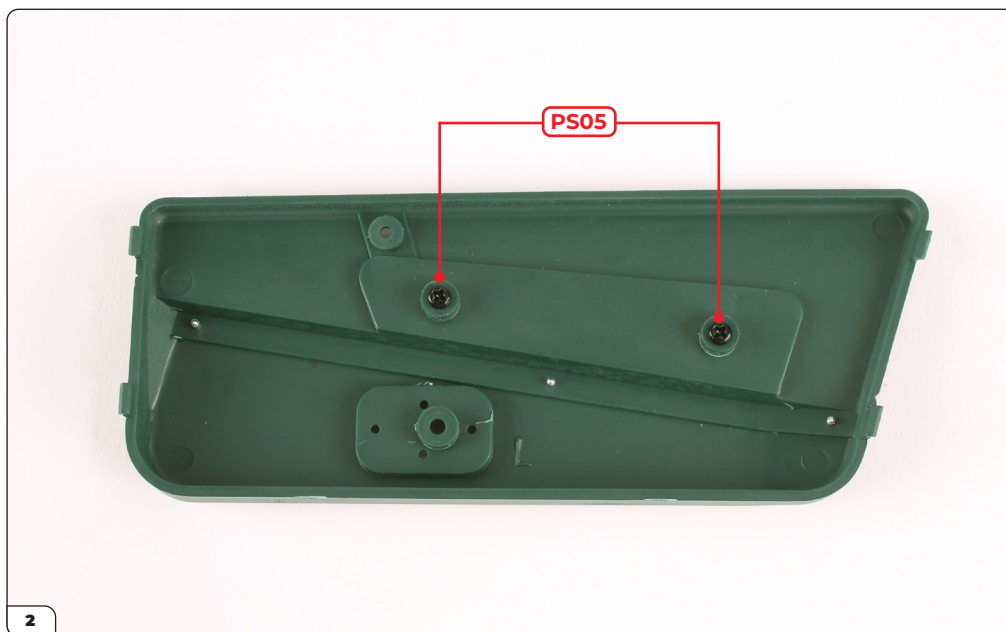
Name	Name
53-A Left interior panel	PS05 screw x4
53-B Left trim panel	PS09 screw x2
53-C Left door handle	
53-D Left door handle frame	
53-E Left door pull handle	



Stage 053: Building the Left Door Interior Panel

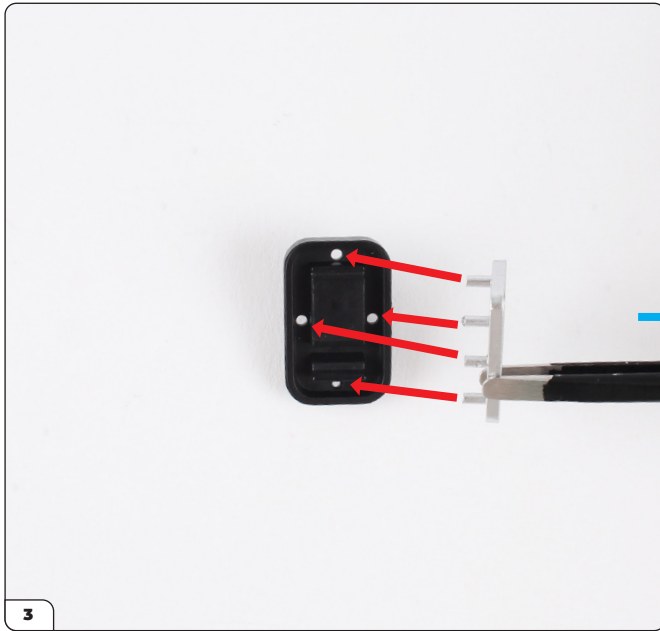


Take the left interior panel (53-A) and push the left trim panel (53-B) in place.



Secure with 2x PS05 screws.

Stage 053: Building the Left Door Interior Panel



Fit the left door handle (53-C) and frame (53-D) together by pushing the pins into the holes. Press firmly until the frame is flush inside the recess.

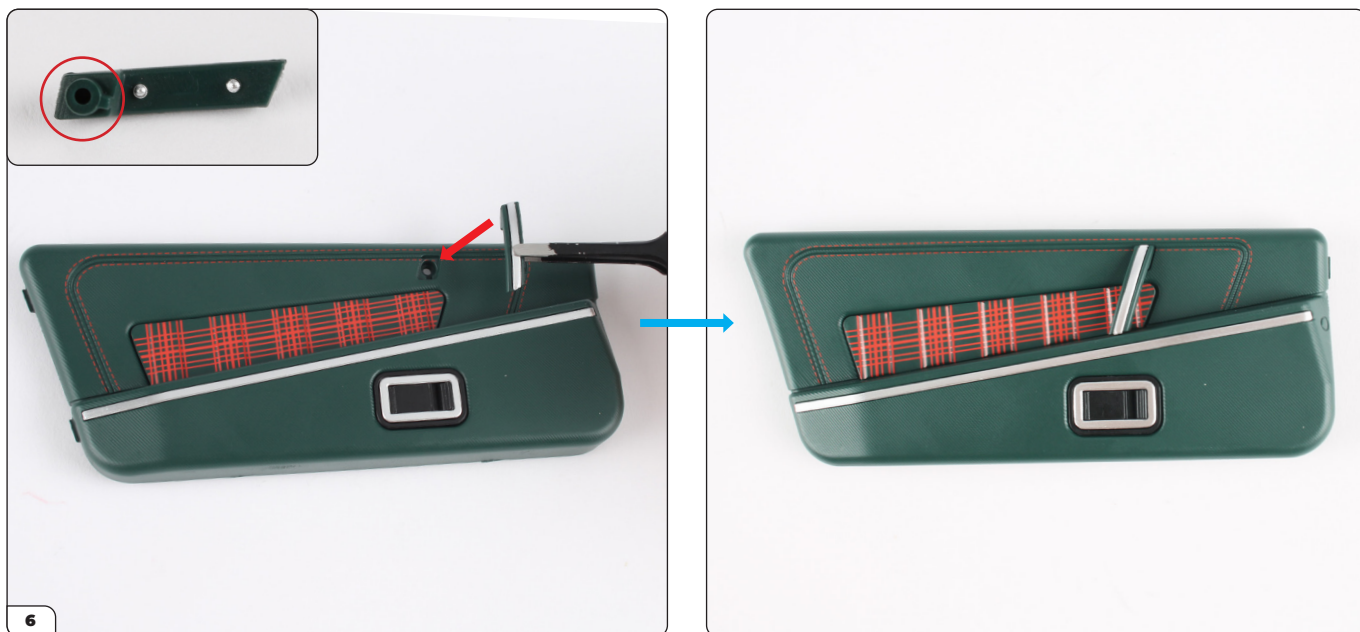


Press the door handle firmly into the interior panel.

Stage 053: Building the Left Door Interior Panel



Secure with a PS05 screw.



Fit the left pull handle (53-E) using the shaped plug (circled) as a guide.

Stage 053: Building the Left Door Interior Panel

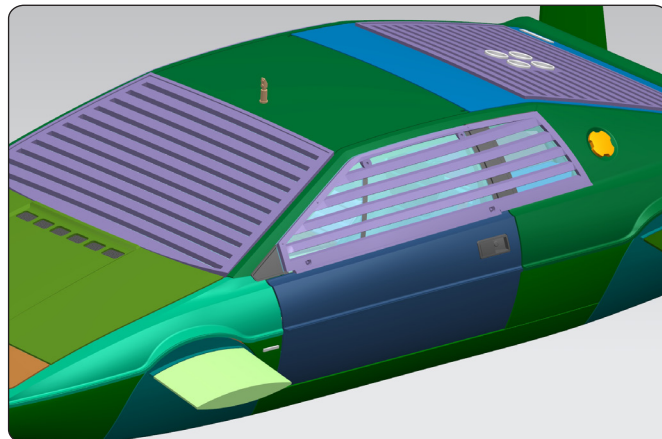


Secure with a PS09 screw.



Stage 054: Assembling the Left Door

To finish building the left door, you'll fix the interior frame and door lock receiver, then attach the assemblies from the previous stages.



STAGE 054 PARTS LIST

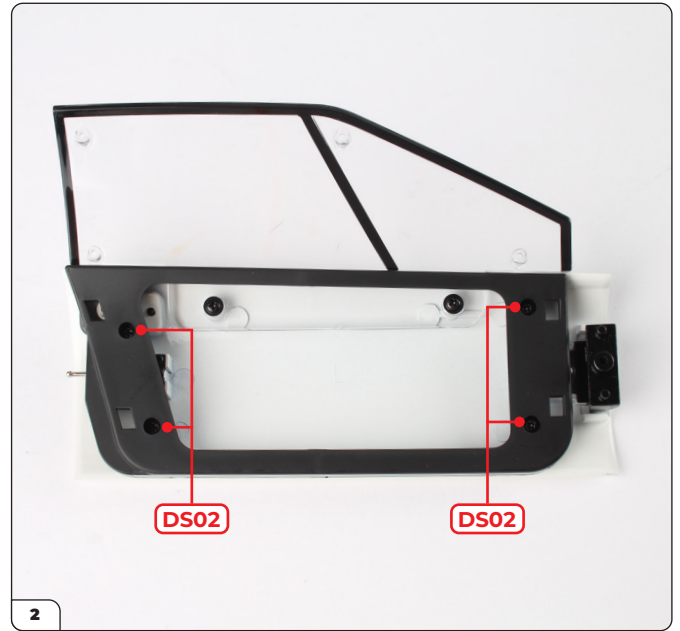
Name
54-A Left door interior frame
54-B Left door lock
PS01 screw x2
DS02 screw x5



Stage 054: Assembling the Left Door



Take the door assembly from Stage 052 and align the left door interior frame (54-A) with it. Position the screw holes over the posts (circled).



Secure with 4x DS02 screws.



Position the left door lock (54-B) in place, pressing its pins into the holes. At the same time, fit the U-shaped opening under the protruding pin (circled).



Secure using a PS01 screw.

Stage 054: Assembling the Left Door

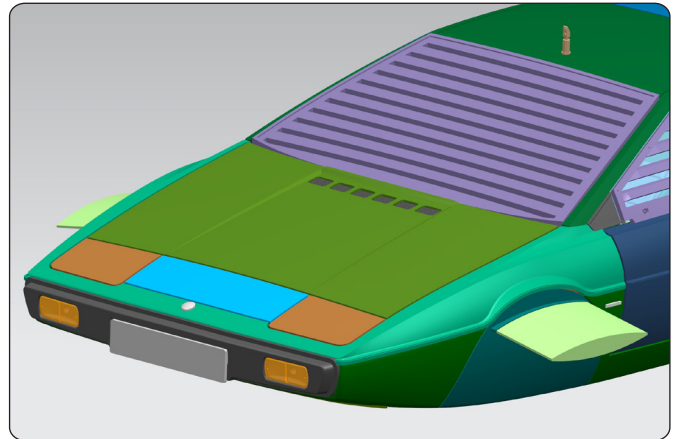


Attach the interior panel (stage 053) to the frame by fitting the tabs into the slots then pressing firmly on the opposite end until it clicks in place.



Stage 055: Preparing the Front Body

In this stage you'll start working on the front body. First you'll attach the bonnet support strut and position the front fender plates.

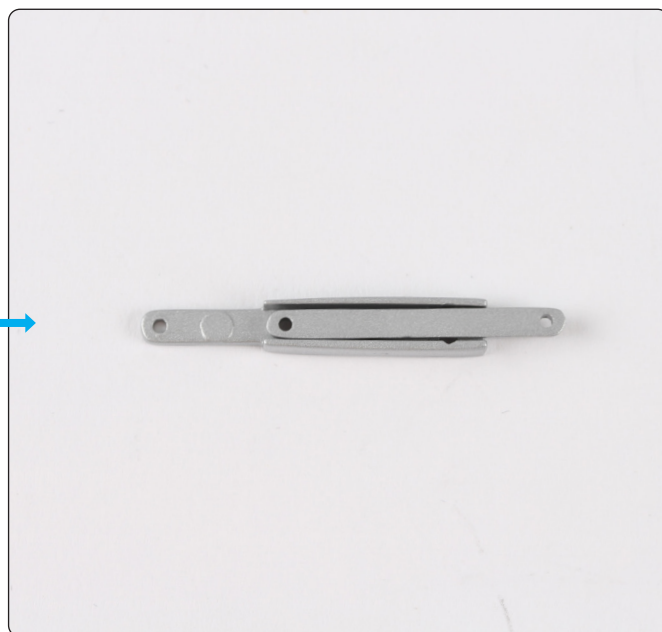


STAGE 055 PARTS LIST

Name
55-A Front body
55-B Bonnet support strut (inner)
55-C Bonnet support strut (outer)
55-D Front fender plate x2
DS38 screw x3



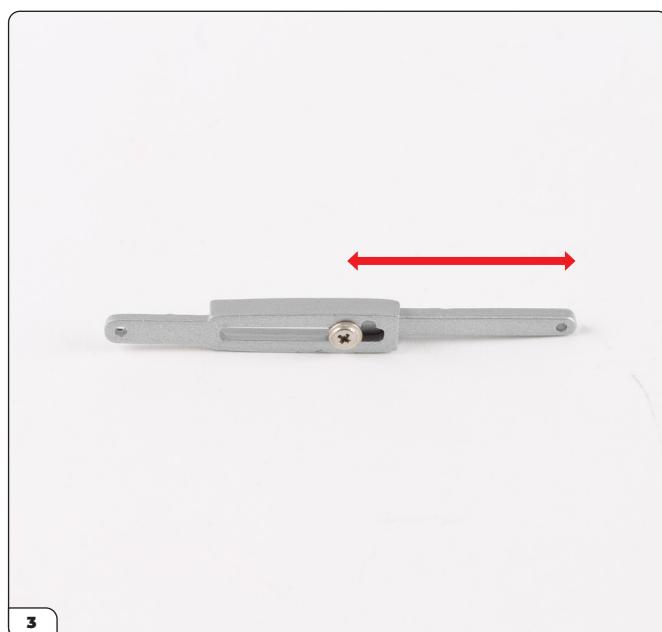
Stage 055: Preparing the Front Body



Take the inner (55-B) and outer (55-C) bonnet support struts then fit them together as shown.



Secure the parts together using a DS38 screw, going through the outer support strut and into the inner one.

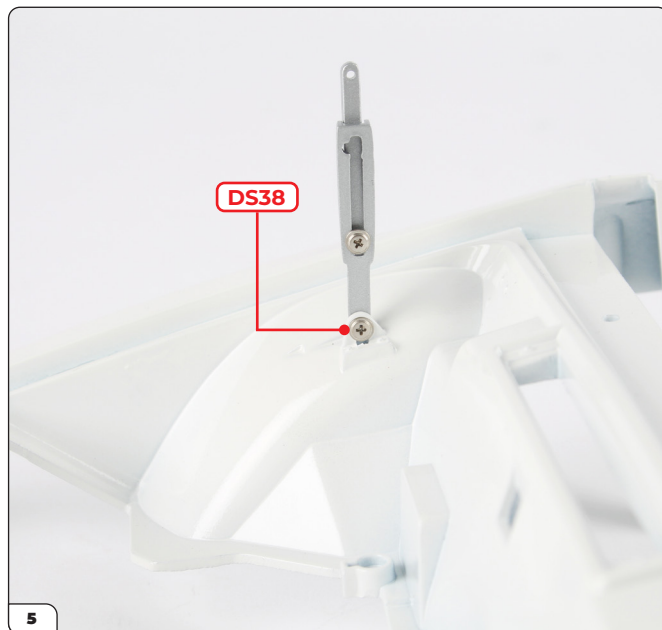


Make sure the screw isn't overtightened, the inner support strut should be able to move back and forth.

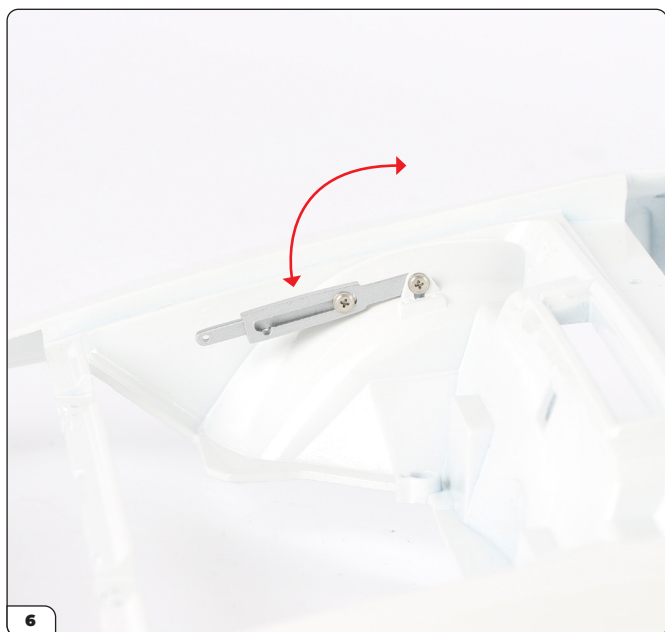
Stage 055: Preparing the Front Body



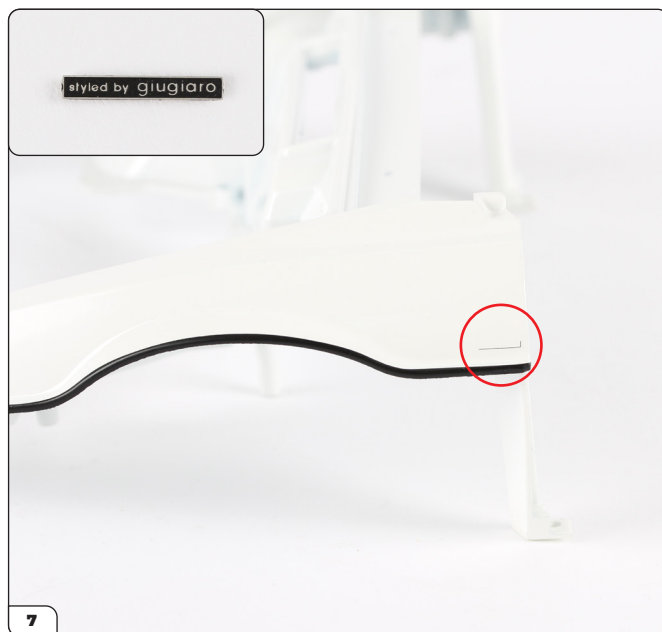
Position the end of the outer support strut on the inside, next to the tab located on the front body.



Secure the bonnet support strut by driving through a DS38 screw from the inside as shown.



Check that the bonnet support strut can move up and down. Adjust the tightness of the screw if needed.



Next take one of the front fender plates (55-D), which have "styled by giugiaro" written on them (inset). Locate the guideline marked on the left-hand side of the front body (circled).

Stage 055: Preparing the Front Body



Remove the backing from the front fender plate (inset) then carefully stick it to the front body using the guideline to position it correctly. Make sure the writing is the correct way up.



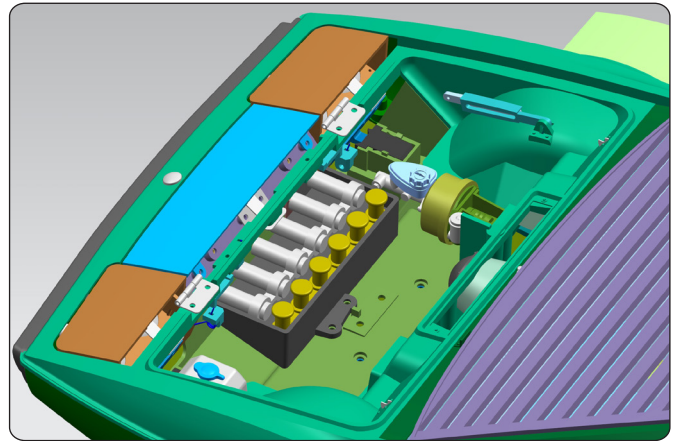
Repeat for the second front fender plate on the right-hand side of the front body.

STAGE COMPLETE



Stage 056: Building the Brake Servo

In this stage you'll build the brake servo and secure it to the front body.

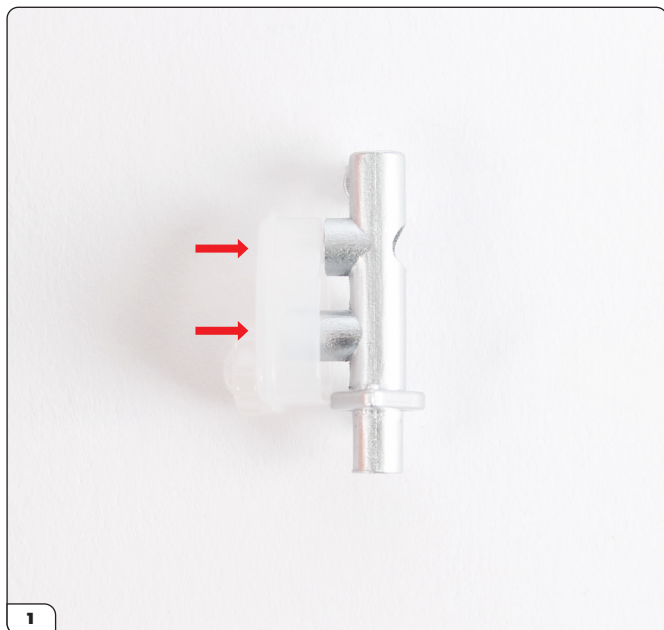


STAGE 056 PARTS LIST

Name	Name
56-A Brake servo chamber	PS14 screw x5
56-B Brake fluid reservoir	PS16 screw x2
56-C Clutch master cylinder	
56-D Brake servo mounting bracket	
56-E Brake master cylinder	



Stage 056: Building the Brake Servo



Take the brake master cylinder (56-E) then press the brake fluid reservoir (56-B) into it as shown.



Secure the parts together using a PS16 screw.



Push the brake master cylinder into the brake servo chamber (56-A).



Stage 056: Building the Brake Servo



Secure with a PS14 screw.



Take the brake servo mounting bracket (56-D) and press it into the assembly.

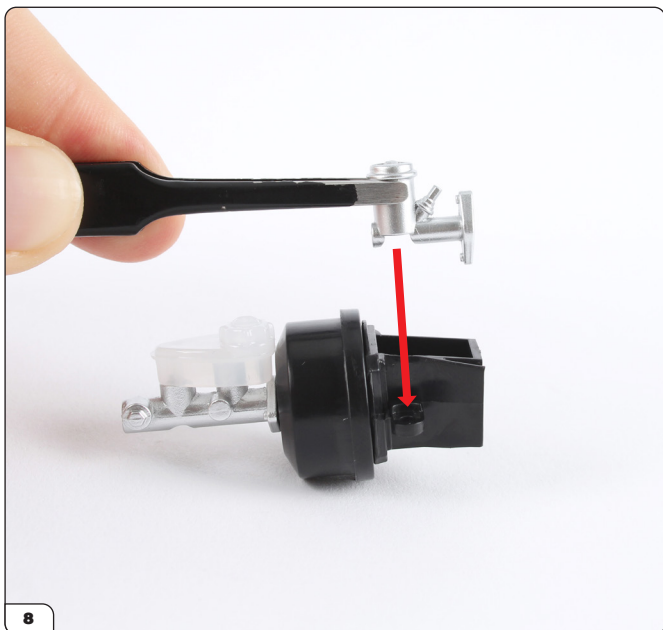


The parts should look like this once fitted.



Secure together using a PS14 screw.

Stage 056: Building the Brake Servo



Position the clutch master cylinder (56-C) on the brake servo mounting bracket.

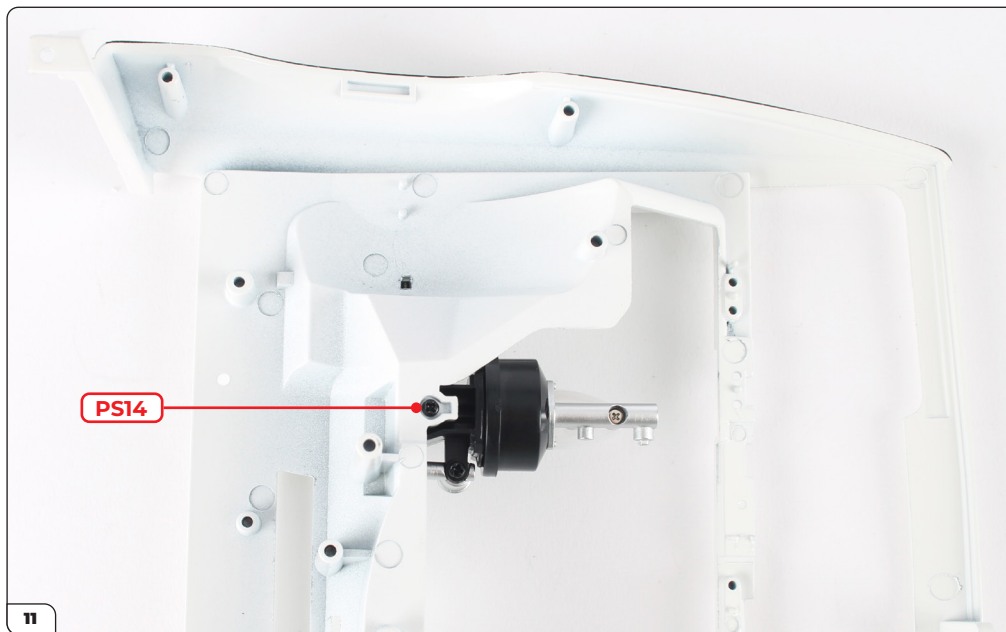


Secure with a PS14 screw.



Position the brake servo assembly onto the shaped hole on the front body (stage 055).

Stage 056: Building the Brake Servo

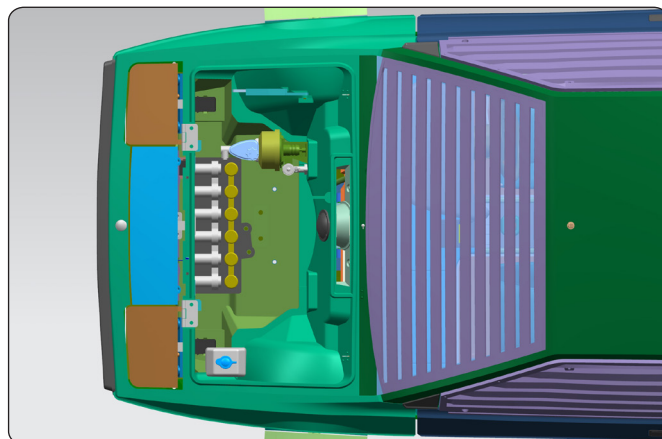


Secure from underneath using a PS14 screw.



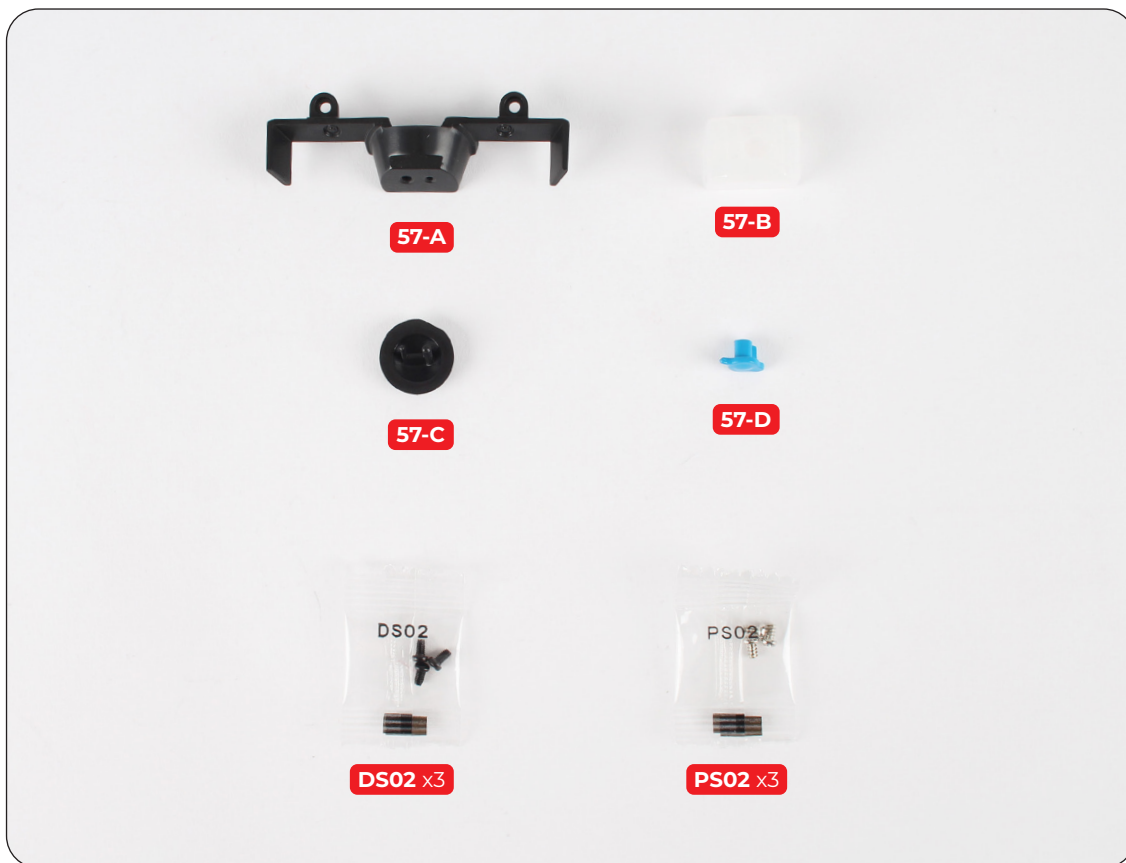
Stage 057: Fitting the Dual Air Intake and Washer Fluid Reservoir

In the final stage for this pack, you'll add the washer fluid reservoir and the dual air intake to the front body.

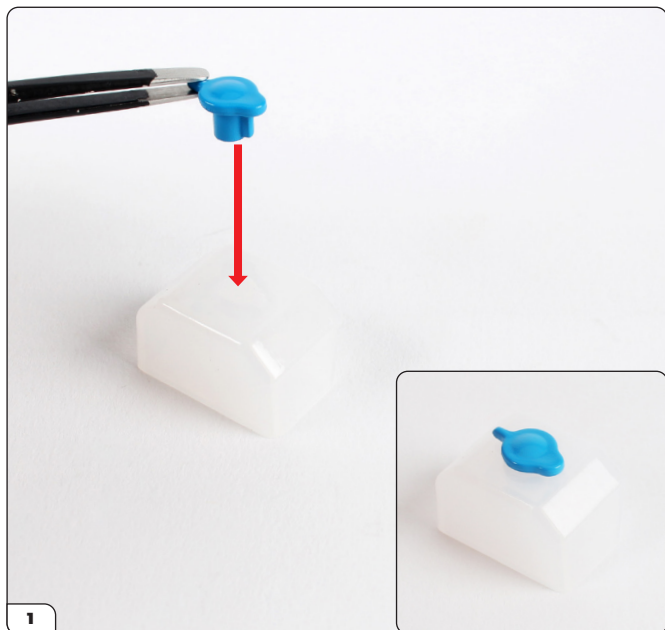


STAGE 057 PARTS LIST

Name
57-A Dual air intake
57-B Washer fluid reservoir
57-C Dual air intake cover
57-D Washer fluid reservoir cap
DS02 screw x3
PS02 screw x3



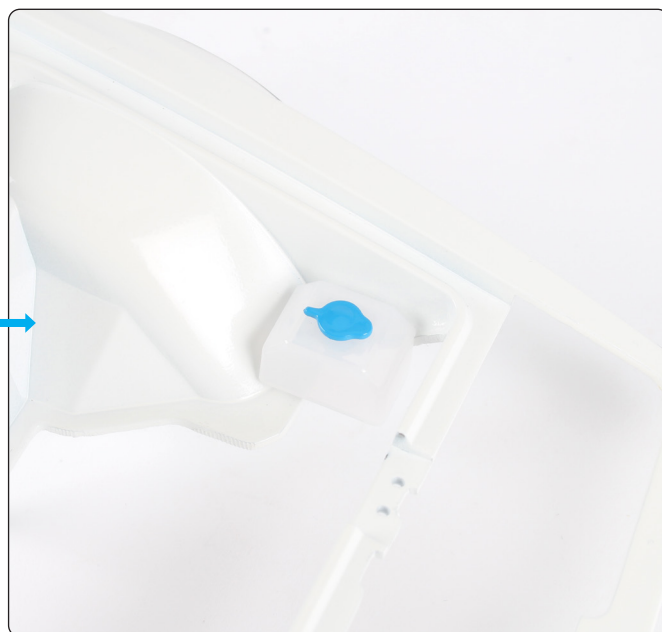
Stage 057: Fitting the Dual Air Intake and Washer Fluid Reservoir



Take the washer fluid reservoir (57-B) and push the cap (57-D) into place as shown.



Secure with a PS02 screw. Note the screw post for the next step (circled).



Position the screw post onto the hole in the front body. The reservoir is shaped to help fit against the curve of the body.

Stage 057: Fitting the Dual Air Intake and Washer Fluid Reservoir

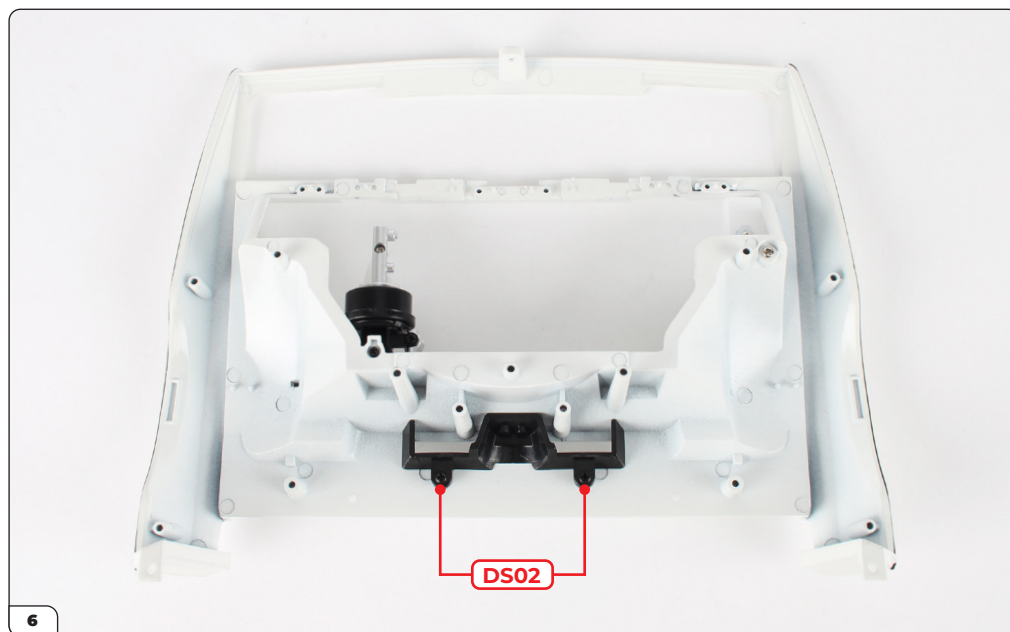


Secure from underneath using a PS02 screw.



Align the dual air intake (57-A) with the front body as shown.

Stage 057: Fitting the Dual Air Intake and Washer Fluid Reservoir



Position the dual air intake and secure it using 2x DS02 screws.



Turn the assembly upright and take the dual air intake cover (57-C). Press it through the rectangular opening and into the dual air intake. The pins are different sizes to ensure the correct orientation.

Stage 057: Fitting the Dual Air Intake and Washer Fluid Reservoir

STAGE COMPLETE

