

**THE  
SPY WHO  
LOVED  
ME™**

LOTUS  
esprit



# Pack 10

## BUILD INSTRUCTIONS

**STAGE 076: ATTACHING THE  
TAILGATE PISTONS**

**STAGE 080: ASSEMBLING THE  
ROOF LINER**

**STAGE 077: ASSEMBLING THE PERISCOPE**

**STAGE 081: ATTACHING THE SUNVISORS**

**STAGE 078: ATTACHING THE TAILGATE  
GLASS AND LOUVRES**

**STAGE 082: ATTACHING THE WINDSCREEN  
LOUVRES AND ROOF LINER**

**STAGE 079: BUILDING THE MISSILE  
LAUNCHER AND ATTACHING  
THE TAILGATE**

**STAGE 083: ASSEMBLING THE RUDDERS**

THE SPY WHO LOVED ME © Danjaq, LLC and Metro-Goldwyn-Mayer Studios Inc. THE SPY WHO LOVED ME, *007*™ and related James Bond Indicia © 1962-2024 Danjaq, LLC and Metro-Goldwyn-Mayer Studios Inc. THE SPY WHO LOVED ME, *007*™ and related James Bond Trademarks are trademarks of Danjaq, LLC. All Rights Reserved. Produced under licence from Group Lotus LTD. LOTUS, the Lotus Roundel, car names and all associated logos and distinctive designs are trade marks of Group Lotus LTD.

## Advice from the experts

---

Spare screws are included with each part. Occasionally, you may be instructed to keep spare or unused screws for a later stage. Keep these spares in a safe place and label them correctly.

Please make sure you don't mix up the screws. They look quite similar, but the threads do vary slightly. Using the wrong screws may damage the parts.

When securing parts together using multiple screws, fit each screw loosely to ensure all the parts are correctly aligned before gently tightening them firmly, but not overtight, in the order in which you placed them.

The screwdriver can be magnetized by stroking it with a magnet (fridge magnet, etc.) enabling it to hold the screws and make assembly easier.

If a screw is tight going into a metal part, do not force it as you may shear the head off. Remove it and put a tiny smear of Vaseline, soap or light oil on the thread. That will lubricate it and make it easier to drive home.

During the course of this build, you will receive many pieces that you will assemble immediately – following the instructions in the corresponding stage – and other pieces that you should store safely to one side, for use in future assembly stages.

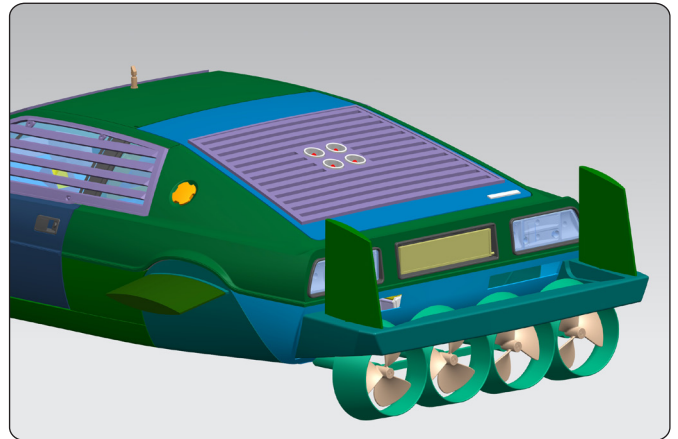
Left and Right! When building your *The Spy Who Loved Me* Lotus Esprit, the left- or right-hand side refers to that side as if you are sitting in the car.



**WARNING:** Some parts are assembled using magnets. These magnets can cause serious injury if they are swallowed. Keep away from children. If you suspect a magnet has been swallowed, seek medical help straight away.

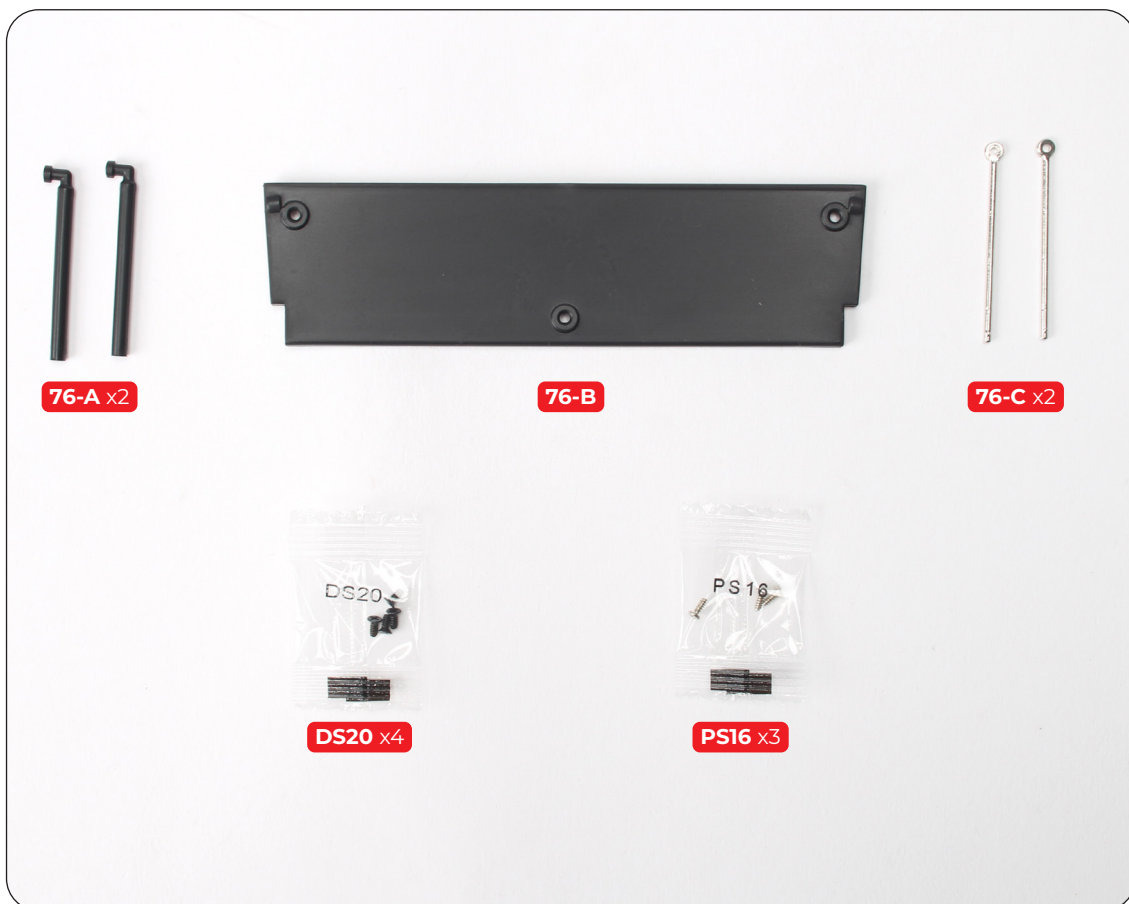
## Stage 076: Attaching the Tailgate Pistons

In this stage you'll attach the tailgate piston cylinders and the piston rods.

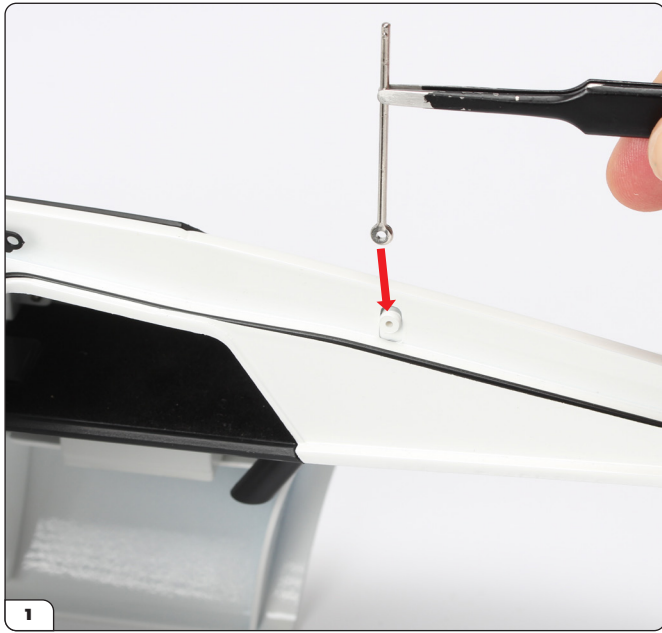


### STAGE 076 PARTS LIST

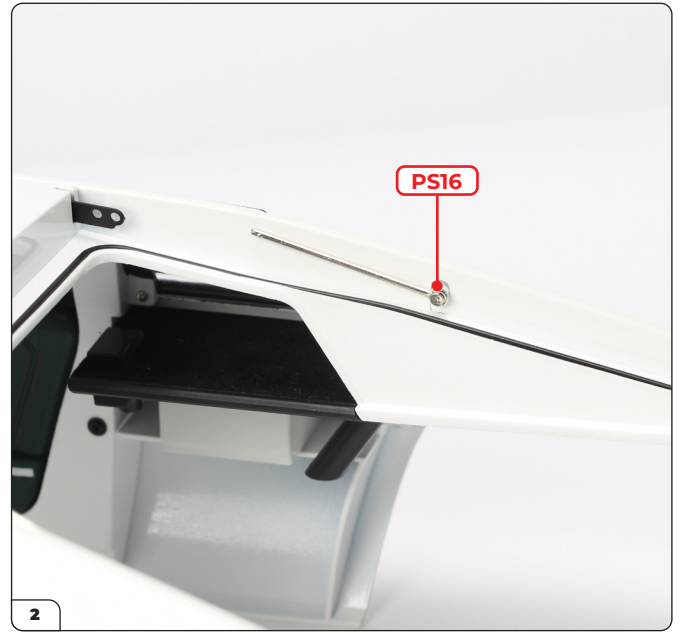
Name
76-A Piston cylinder x2
76-B Tailgate upper trim
76-C Piston rod x2
DS20 screws x4
PS16 screws x3



## Stage 076: Attaching the Tailgate Pistons



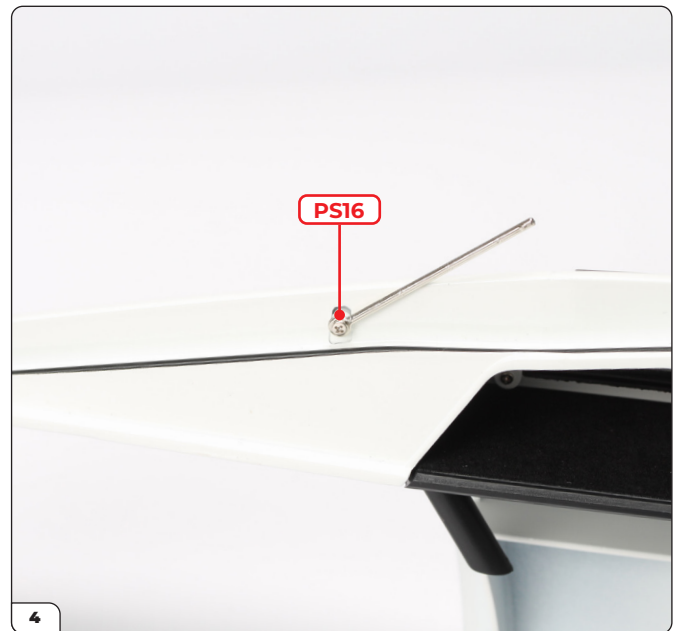
Align a piston rod (76-C) with the main body (stage 075).



Screw the piston rod to the main body with a PS16 screw. Don't overtighten the screw.



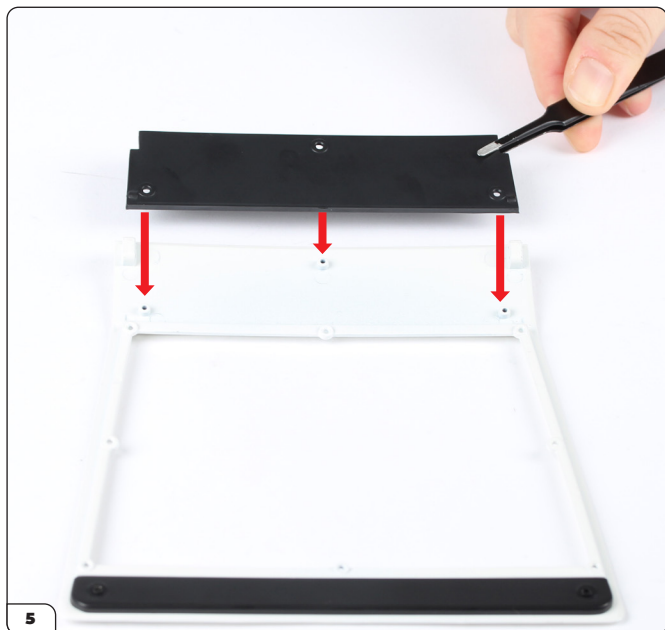
Align the other piston rod with the opposite side.



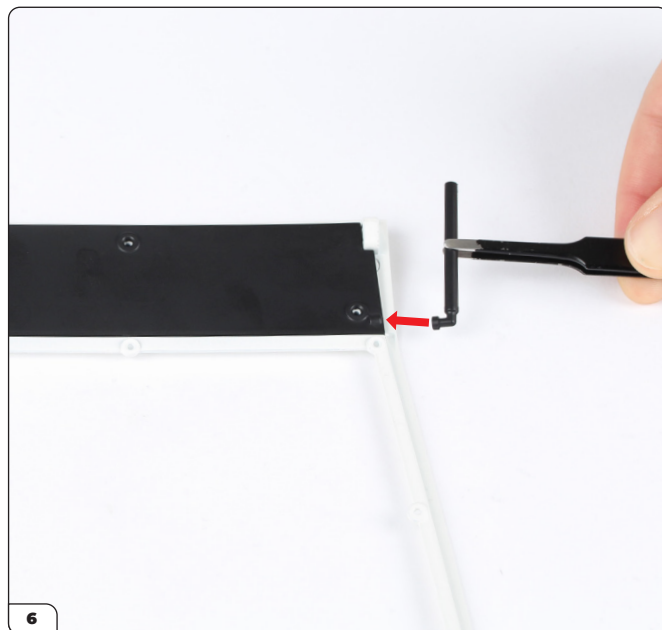
Screw the piston rod to the main body with a PS16 screw. Don't overtighten the screw.



## Stage 076: Attaching the Tailgate Pistons



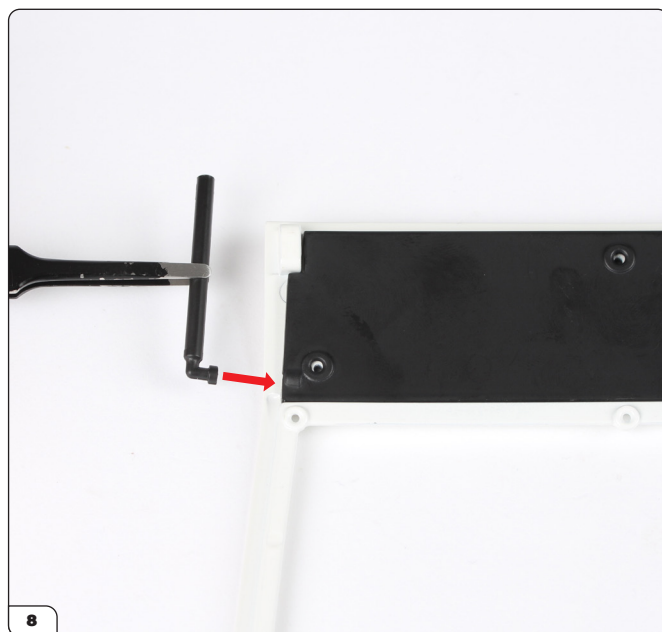
Place the tailgate upper trim (76-B) onto the tailgate panel (stage 075).



Align a piston cylinder (76-A) with the assembly.



Lift the tailgate upper trim and position the piston cylinder underneath it as shown.



Align the other piston cylinder with the opposite side.

## Stage 076: Attaching the Tailgate Pistons



Lift the tailgate upper trim and position the piston cylinder underneath it.

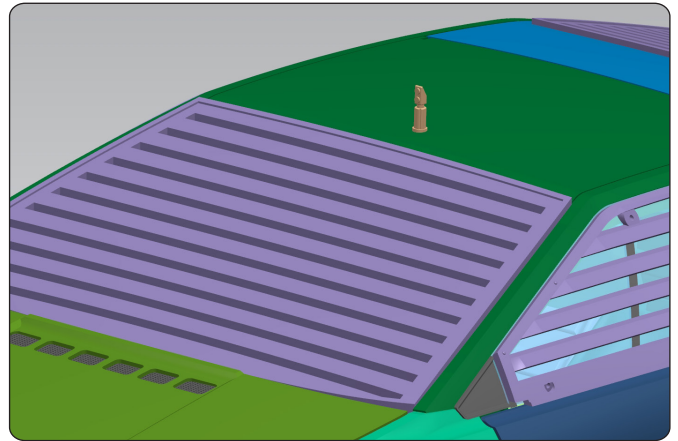


Screw the tailgate upper trim in place with 3x DS20 screws.



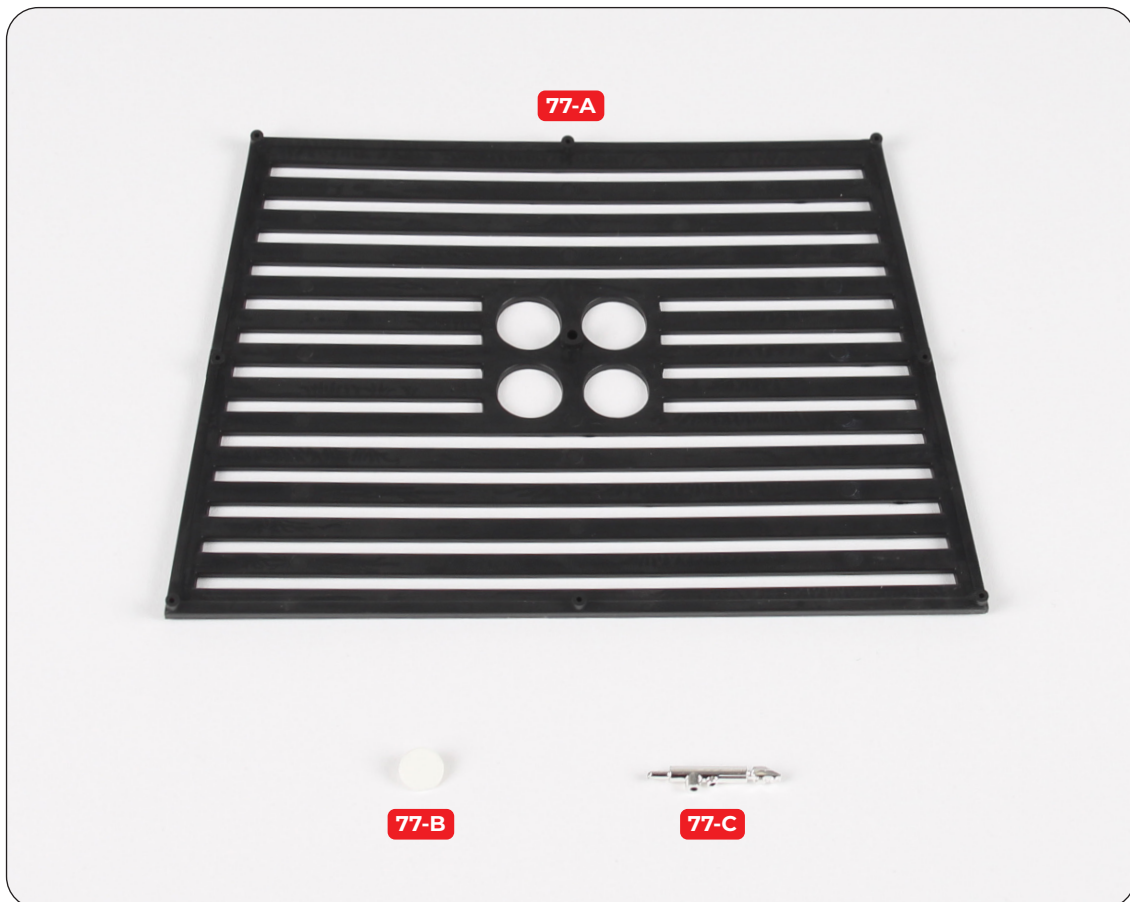
## Stage 077: Assembling the Periscope

In this stage you'll assemble the periscope by fitting the cover.



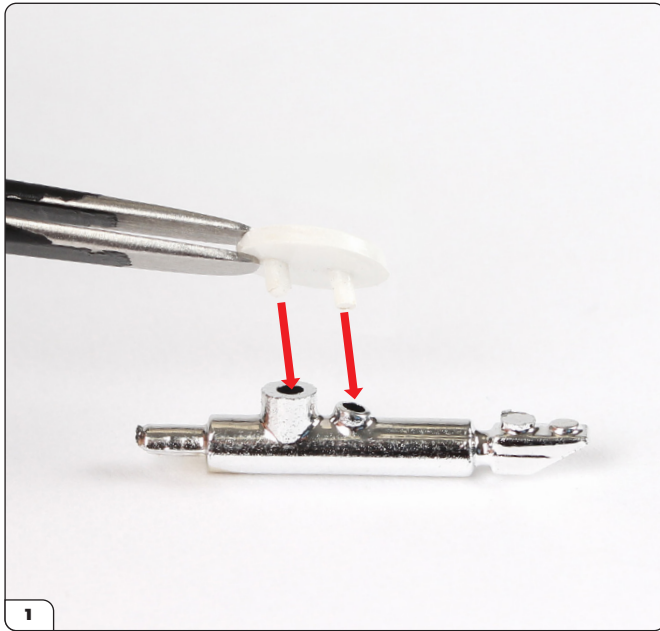
### STAGE 077 PARTS LIST

Name
77-A Tailgate louvres
77-B Periscope cover
77-C Periscope





## Stage 077: Assembling the Periscope



Align the periscope cover (77-B) with the periscope (77-C).

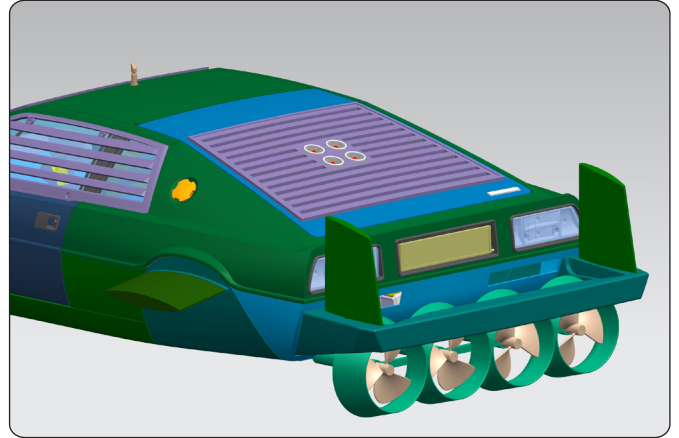


Press the periscope cover into the periscope. Keep this in a safe place until it is needed in a later stage.



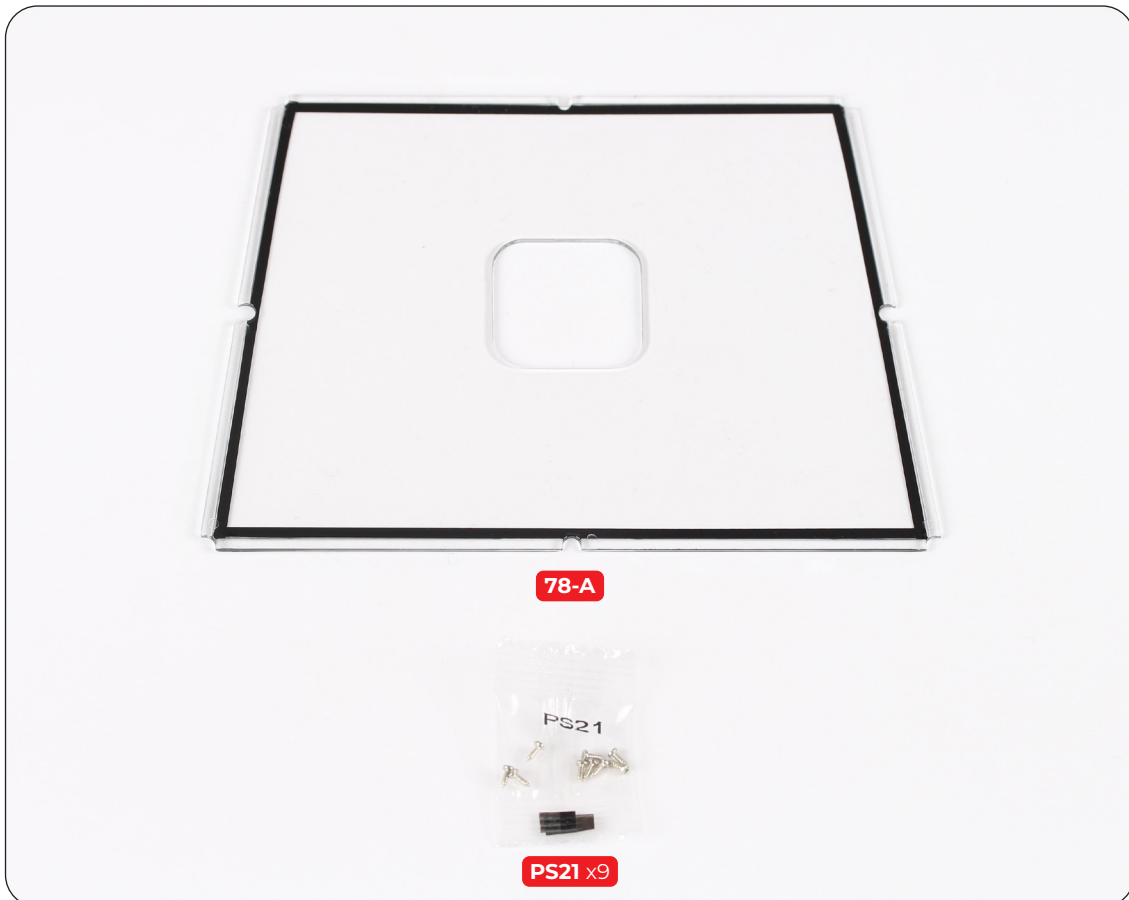
## Stage 078: Attaching the Tailgate Glass and Louvres

In this stage you'll attach the tailgate glass and louvres.



### STAGE 078 PARTS LIST

Name
78-A Tailgate glass
PS21 screws x9





## Stage 078: Attaching the Tailgate Glass and Louvres



One side of the tailgate glass is ridged along the edge. Place the ridged side face-up then align the tailgate louvres (stage 077) with the glass.



Press the tailgate louvres onto the glass.

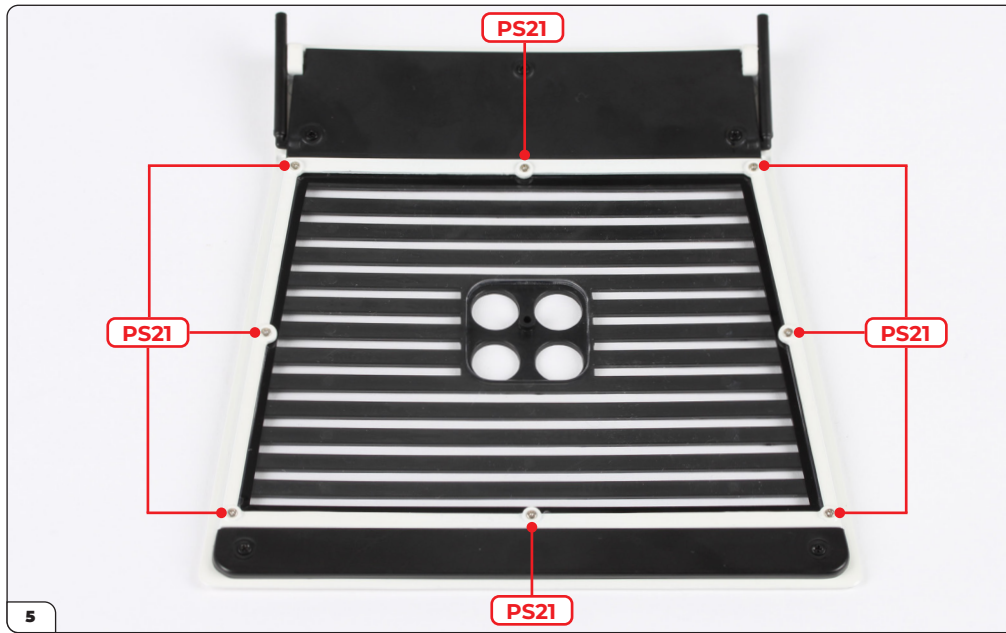


Align the tailgate louvres with the tailgate panel (stage 076).



Press the parts together.

## Stage 078: Attaching the Tailgate Glass and Louvres

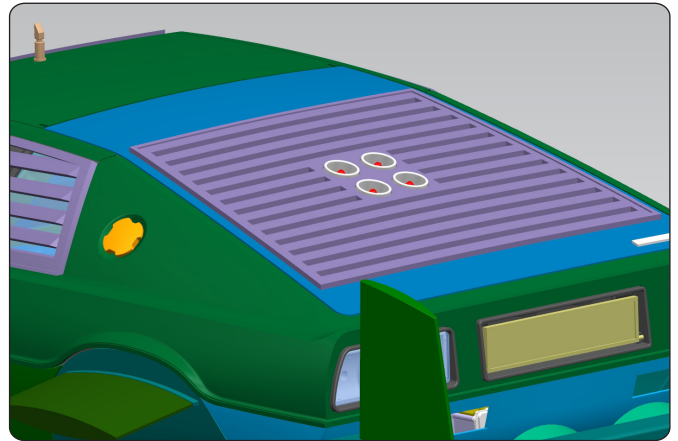


Screw the parts together using 8x PS21 screws.



# Stage 079: Building the Missile Launcher and Attaching the Tailgate

In this stage you'll build the tailgate missile launcher then attach the tailgate to the main body.



## STAGE 079 PARTS LIST

Name
79-A Missile launcher base
79-B Missile launcher
79-C Deployed missile
79-D Missile x3
PS05 screws x3
DS20 screws x5



79-A



79-B



79-C



79-D x3



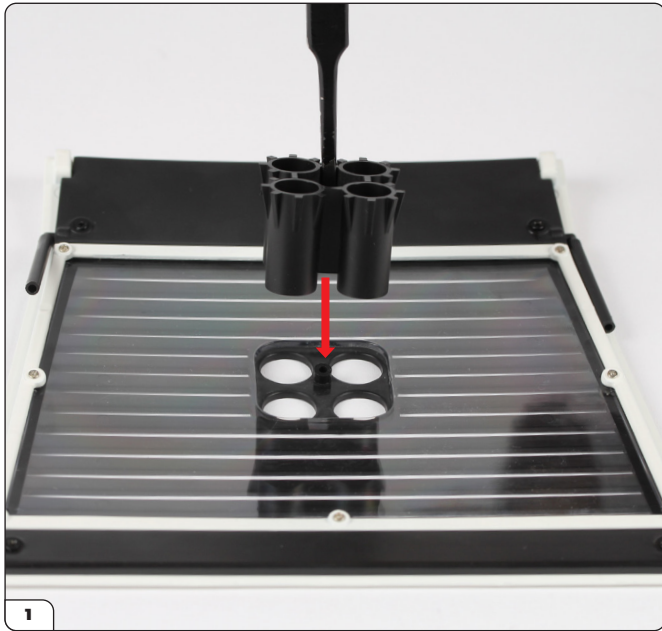
PS05 x3



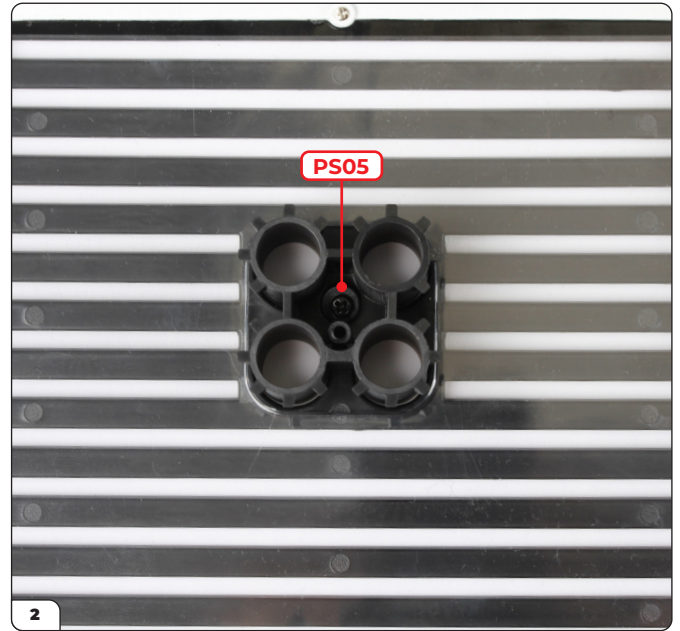
DS20 x5



## Stage 079: Building the Missile Launcher and Attaching the Tailgate



Align the missile launcher (79-B) with the tailgate louvres (stage 078) as shown.



Position the missile launcher in place then screw the parts together using 1x PS05 screw. The parts can only fit together in one way.



Place the missile launcher base (79-A) onto the missile launcher.



Screw the parts together with a PS05 screw.

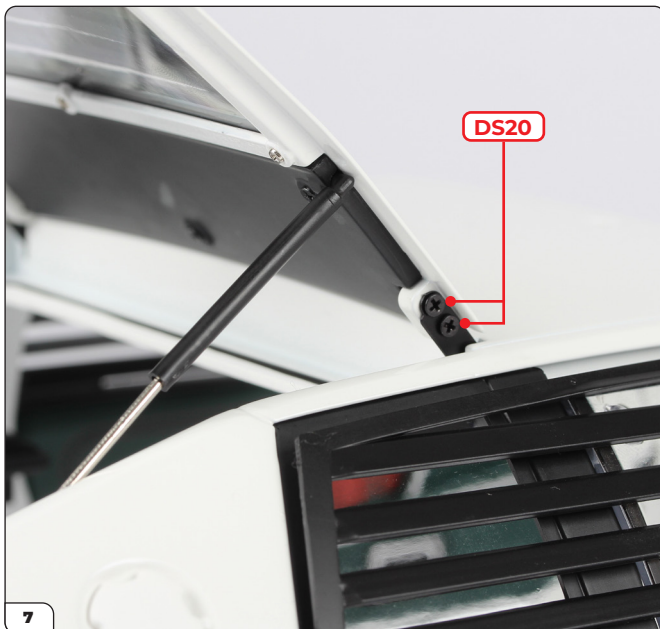
## Stage 079: Building the Missile Launcher and Attaching the Tailgate



Align the assembly with the main body (stage 076) as shown.



Press the piston cylinders onto the piston rods then position the tailgate panel between the hinges.



Screw the hinges to the tailgate panel with 4x DS20 screws. Make sure the screws are tightened.



## Stage 079: Building the Missile Launcher and Attaching the Tailgate



Close the tailgate and check the alignment. You may need to adjust the screws and hinges slightly.



You can place the missiles (79-C and 79-D) inside the missile launcher. Do not glue.



The missiles can be placed in any order.

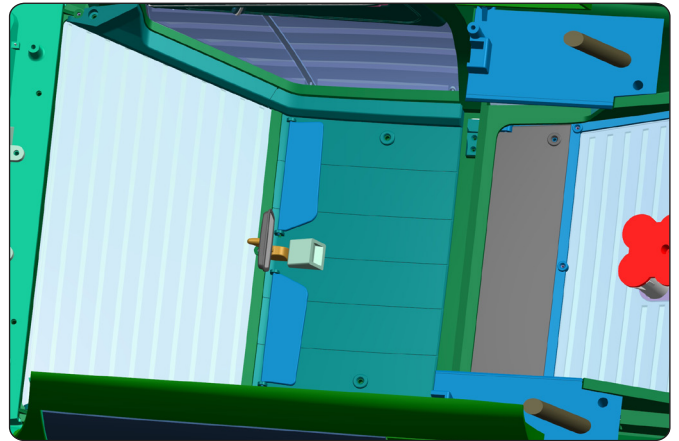
## Stage 079: Building the Missile Launcher and Attaching the Tailgate

STAGE COMPLETE



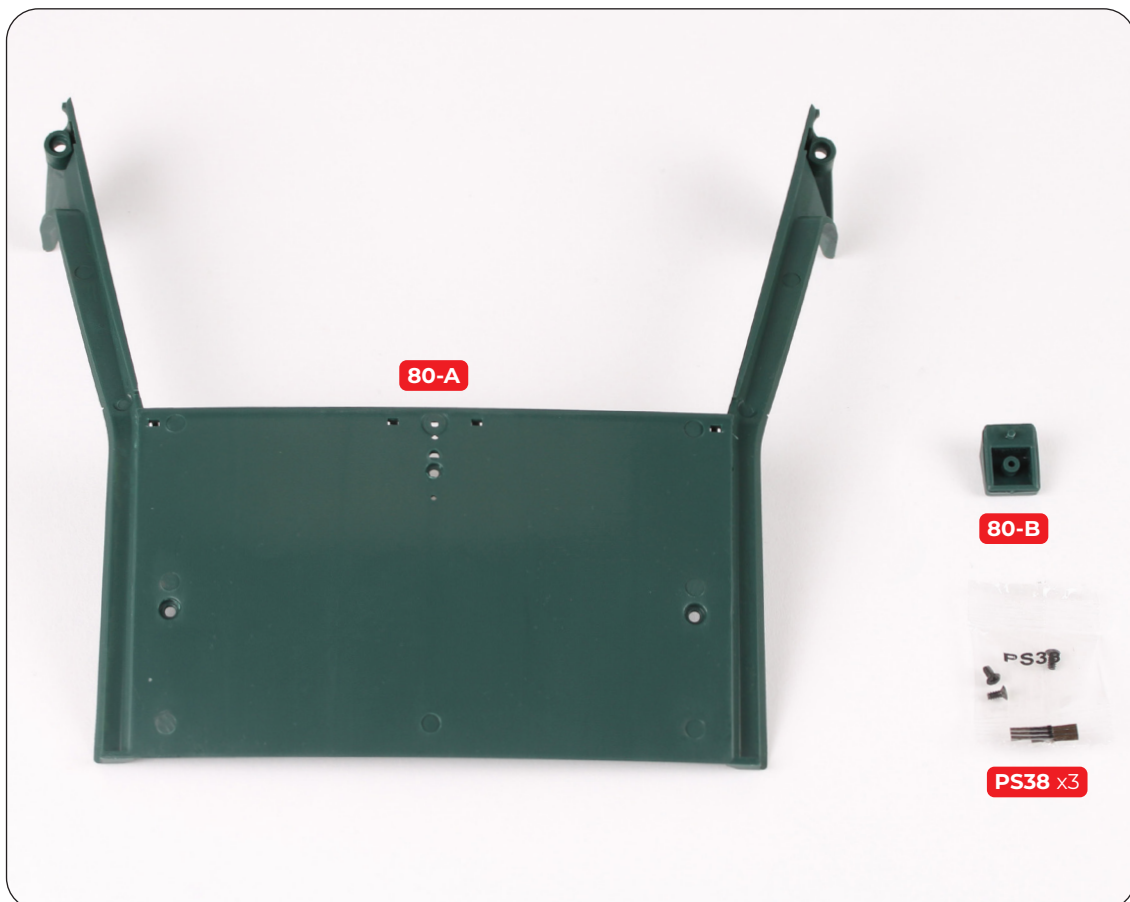
## Stage 080: Assembling the Roof Liner

In this stage you'll assemble the roof liner by attaching the overhead console to it.



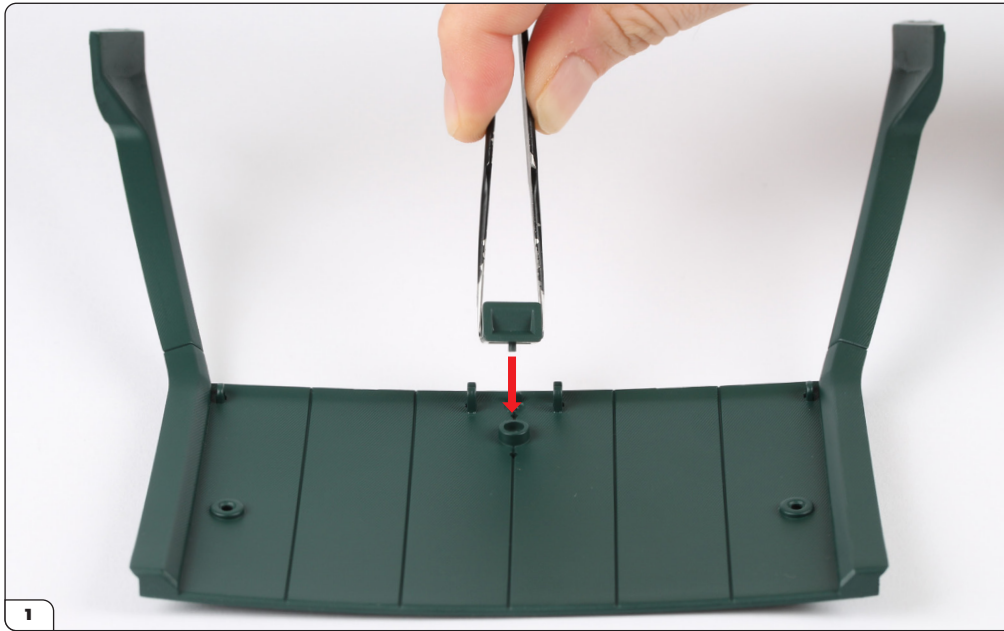
### STAGE 080 PARTS LIST

Name
80-A Roof liner
80-B Overhead console
PS38 screws x3



## Stage 080: Assembling the Roof Liner

---



Align the overhead console (80-B) with the roof liner (80-A).



Press the overhead console into place.

## Stage 080: Assembling the Roof Liner



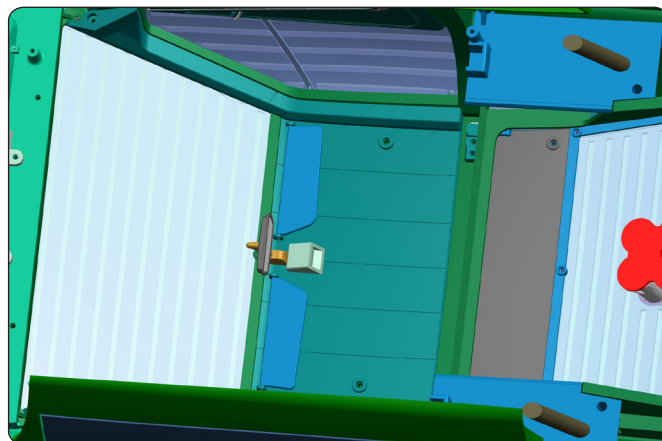
Screw the parts together with 1x PS38 screw.





## Stage 081: Attaching the Sunvisors

In this stage you'll attach the sunvisors to the roof liner.



### STAGE 081 PARTS LIST

Name
81-A Windscreen glass
81-B Sunvisor
81-C Sunvisor



## Stage 081: Attaching the Sunvisors



The sunvisors are identical. Align the sunvisor (81-B or 81-C) with the roof liner (stage 080).



Press the sunvisor into the notch.



The sunvisor should look like this once in place.



Repeat the process for the other sunvisor.

## Stage 081: Attaching the Sunvisors

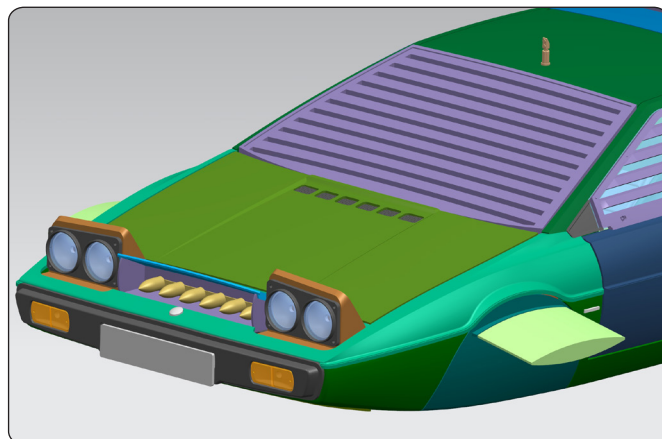
---

STAGE COMPLETE



## Stage 082: Attaching the Windscreen Louvres and Roof Liner

In this stage you'll attach the rearview mirror then install the windscreen louvres and the roof liner.



### STAGE 082 PARTS LIST

Name	Name
82-A Windscreen louvres	82-F Rearview mirror sticker
82-B Roof mirror	82-G Roof mirror sticker
82-C Rearview mirror (part 1)	DS02 screws x5
82-D Rearview mirror (part 2)	PS21 screws x7
82-E Rearview mirror support	





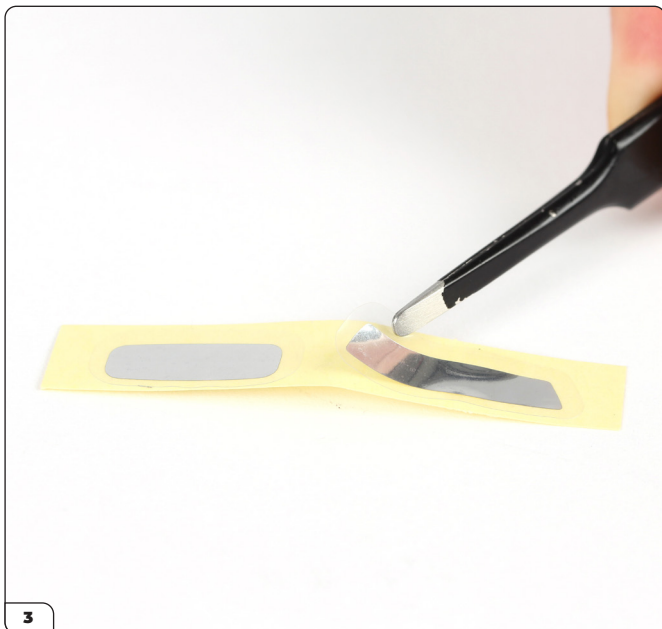
## Stage 082: Attaching the Windscreen Louvres and Roof Liner



Align the rearview mirror part 1 and part 2.



Press the parts together firmly.



Peel the rearview mirror sticker (82-F) from the backing paper.



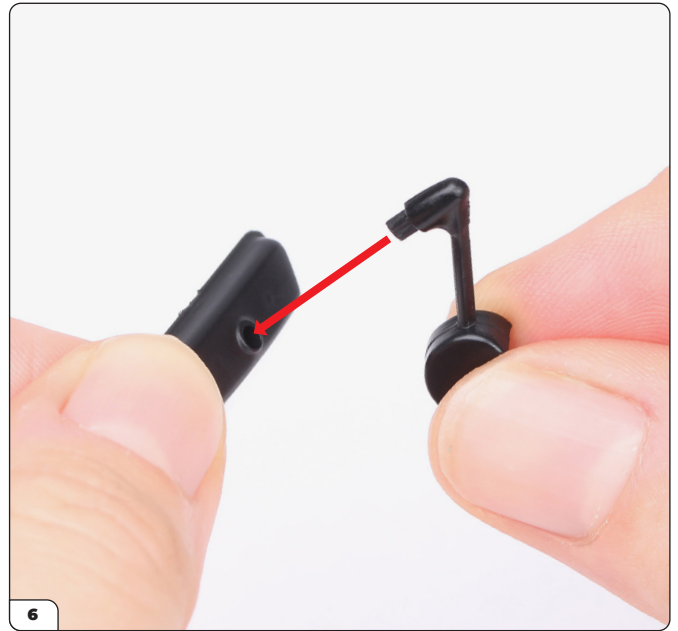
Apply the sticker to the rearview mirror part 2.



## Stage 082: Attaching the Windscreen Louvres and Roof Liner



Press the sticker firmly in place. You can leave the protective film on the sticker until a later stage.



Align the rearview mirror support (82-E) with the assembly.



Press the parts together.



Align the assembly with the roof liner (stage 081).

## Stage 082: Attaching the Windscreen Louvres and Roof Liner



Press the assembly into place.



Screw the parts together with 1x PS21 screw.

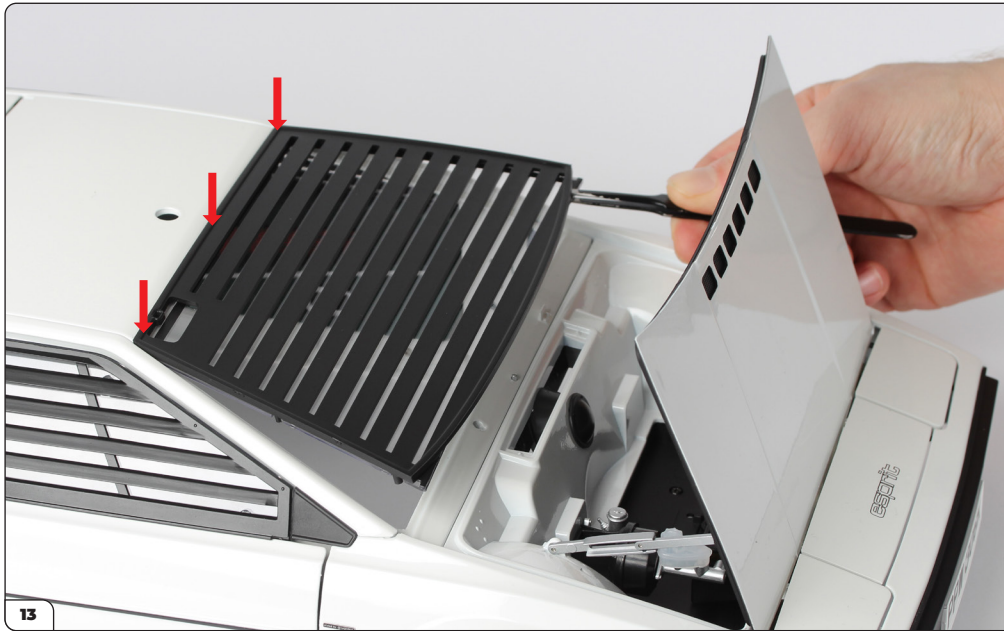


Place the windscreen glass (stage 081) with the ridged side face-up. Align the windscreen louvres (82-A) with it.

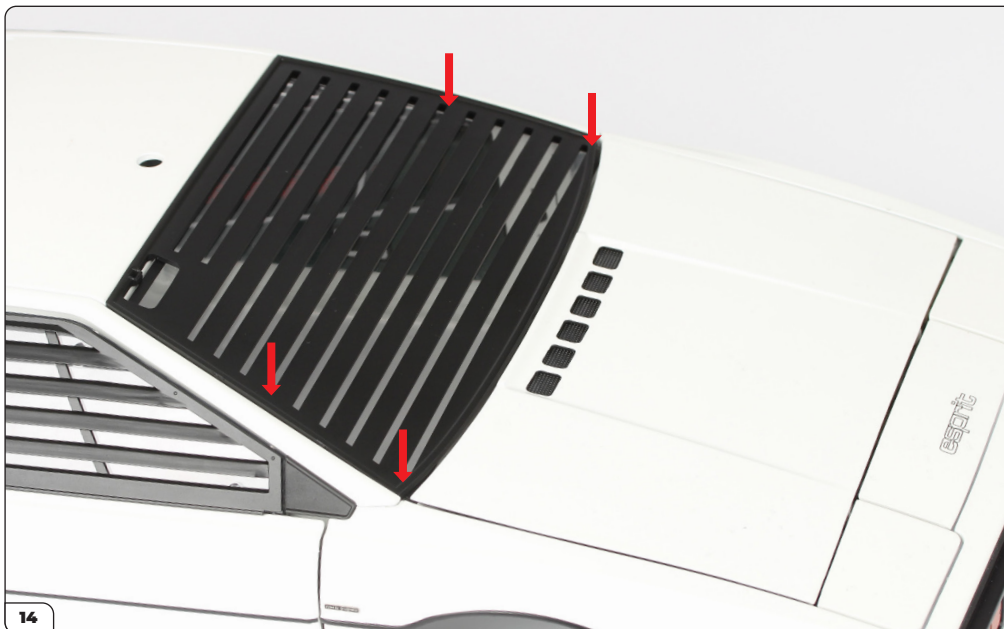


Press the parts together.

## Stage 082: Attaching the Windscreen Louvres and Roof Liner



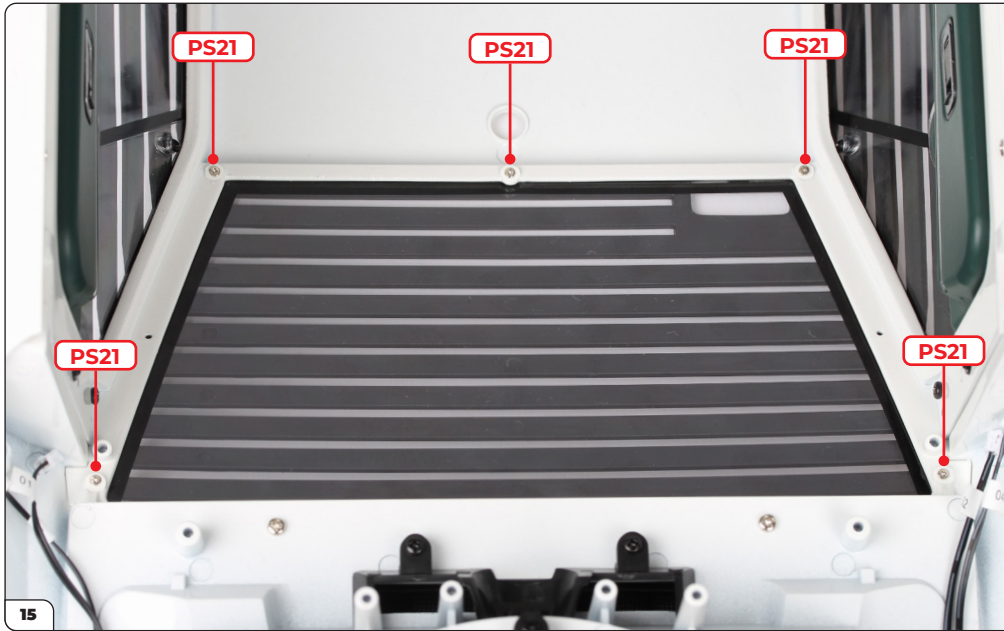
Take the main body (stage 079) and open the bonnet. Press the windscreen louvres into place, starting at the top (arrows).



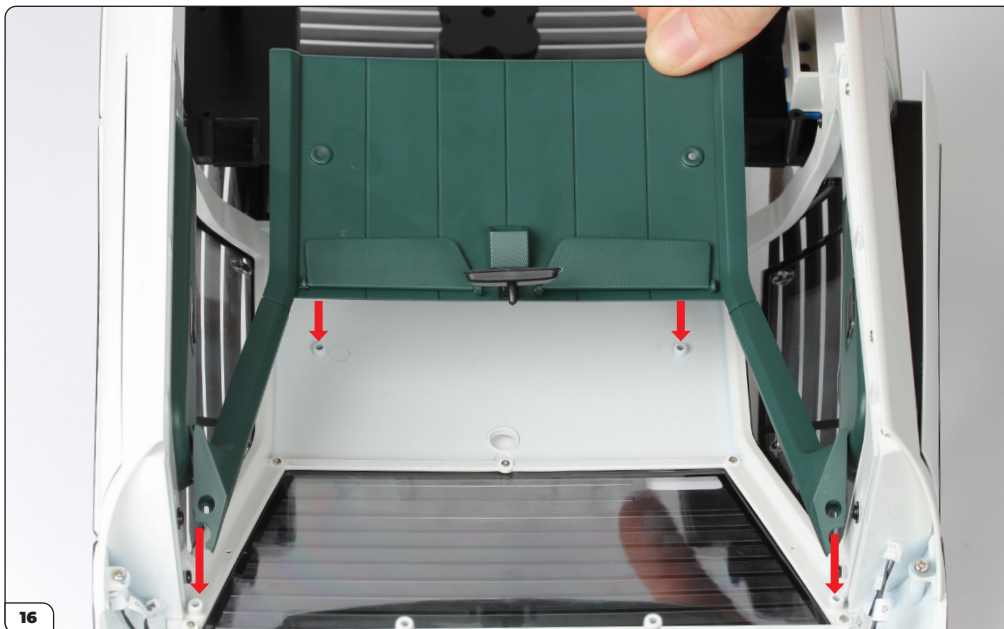
Continue to press the windscreen louvres firmly in place then close the bonnet as shown.



## Stage 082: Attaching the Windscreen Louvres and Roof Liner



Carefully turn the assembly over then secure the parts together using 5x PS21 screws.



Place the roof liner onto the screw posts.



## Stage 082: Attaching the Windscreen Louvres and Roof Liner



Screw the roof liner to the main body with 4x DS02 screws.



Peel the roof mirror sticker (82-C) from the backing paper and apply it to the roof mirror (82-B).



Press the sticker firmly in place. Keep the roof mirror in a safe place until it is needed in a later stage.

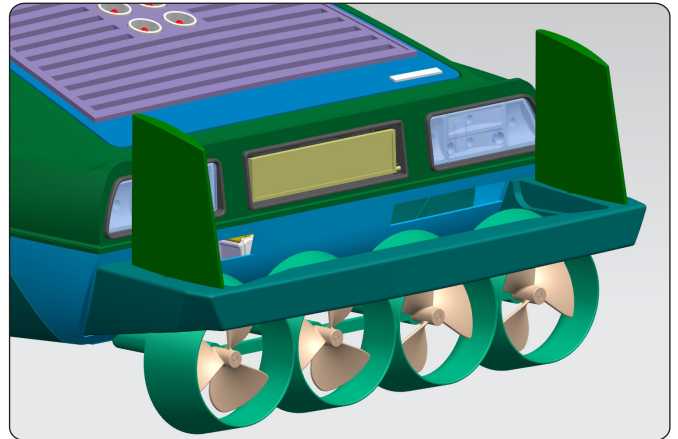
## Stage 082: Attaching the Windscreen Louvres and Roof Liner

STAGE COMPLETE



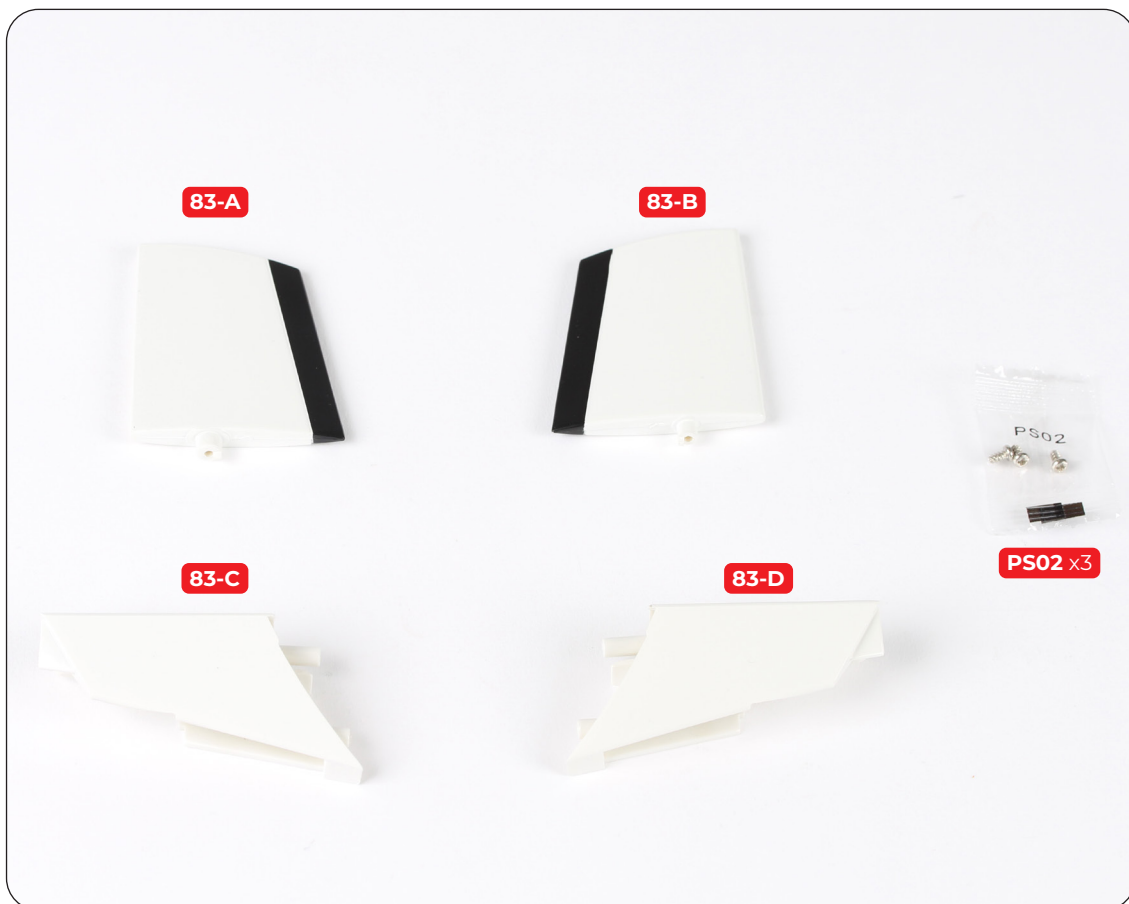
## Stage 083: Assembling the Rudders

In this stage you'll assemble the rudders by attaching them to their mounts.

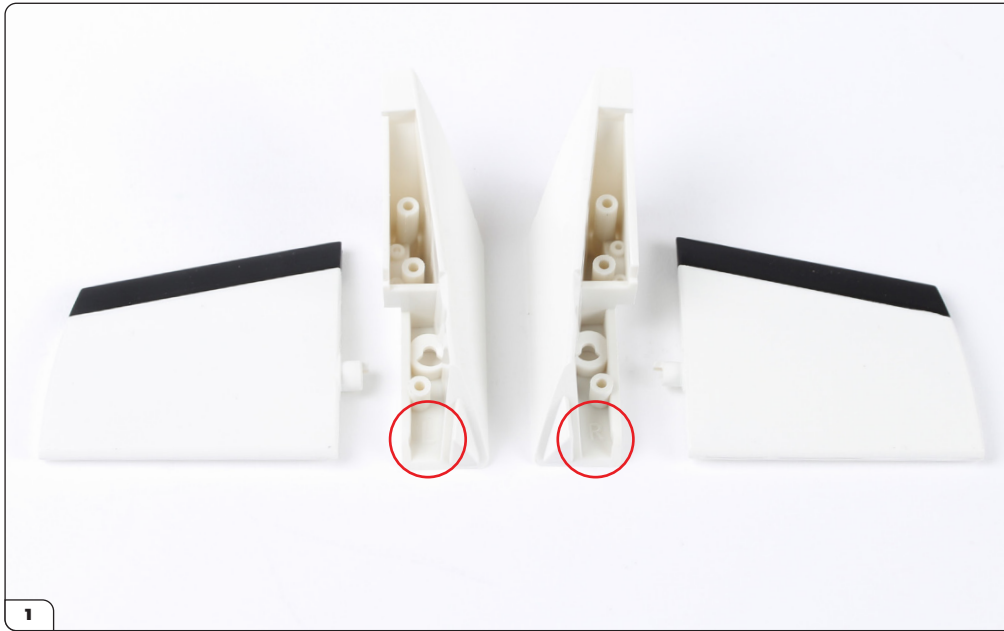


### STAGE 083 PARTS LIST

Name
83-A Left rudder
83-B Right rudder
83-C Right rudder mount
83-D Left rudder mount
PS02 screws x3



## Stage 083: Assembling the Rudders



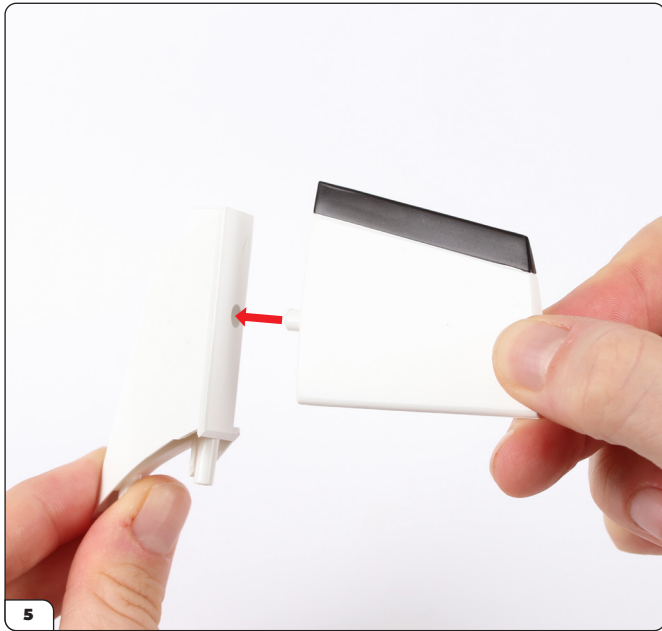
Place the parts on your work surface as shown. The mounts are marked with “L” and “R” (circled).



Pair the left and right parts together as shown. The smooth side of the rudders should be face-up.



## Stage 083: Assembling the Rudders



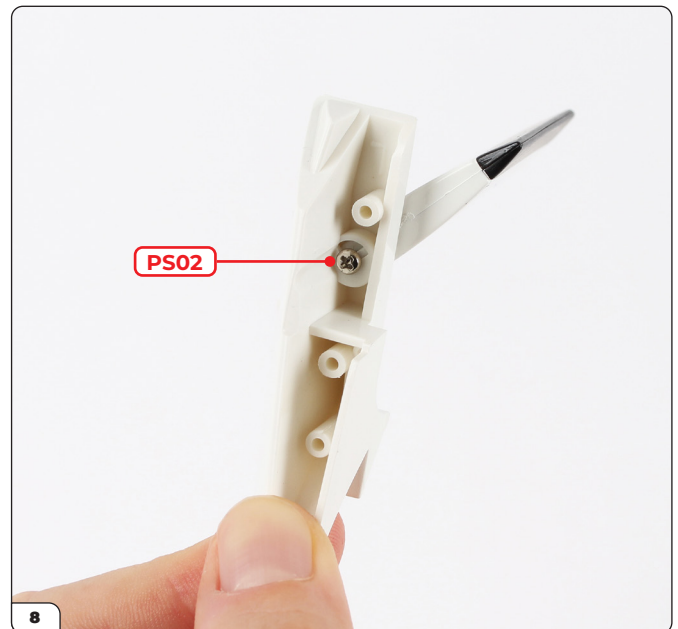
Press the right rudder (83-B) into the right rudder mount (83-C).



Screw the parts together with a PS02 screw. Don't overtighten the screw.



Press the left rudder (83-A) into the left rudder mount (83-D).



Screw the parts together with a PS02 screw. Don't overtighten the screw.

## Stage 083: Assembling the Rudders

STAGE COMPLETE

