

1 9 6 5

SHELBY COBRA

427 SEMI-COMPETITION

1:8 SCALE



Pack 01 | Build Instructions

In the 1960s, Carroll Shelby's Cobras dominated racetracks worldwide, first winning races coast to coast across North America, then in 1965, winning the World Manufacturer's GT Championship, achieving the ultimate goal of defeating Ferrari. The Semi-Competitions were modified from full competition models just enough to make them street legal. Only 29 models were produced, making them one of the most sought-after American sports cars by collectors.

Your 1:8 model replicates the original 1965 Semi-Competition Cobra in intricate detail. From the dashboard dials to the writing on the wheels, every piece is precisely reproduced.

In your first model pack, you will assemble:

STAGE 01: HOOD ASSEMBLY

Air intake, Hood locks and Badge

STAGE 02: FRONT LEFT WHEEL

Wheel, Tire, Brake discs

**STAGE 03: STEERING WHEEL
AND EXHAUST PARTS**

Steering wheel, Emblem, Seat, Roll bar, Exhaust cylinder and muffler

**STAGE 04: ENGINE AND
EXHAUST PARTS**

Engine block, Carburetor, Air filter, Exhaust pipes

**STAGE 05: OIL FILTER
AND EXHAUST PARTS**

STAGE 06: EXHAUST PIPES

Advice from the experts



Spare screws are included with each part. Occasionally, you may be instructed to keep spare or unused screws for a later stage. Keep these spares in a safe place and label them correctly.

Please make sure you don't mix up the screws. They look quite similar, but the threads do vary slightly. Using the wrong screws may damage the parts.

When securing parts together using multiple screws, fit each screw loosely to ensure all the parts are correctly aligned before gently tightening them firmly, but not overtight, in the order in which you placed them.

The screwdriver can be magnetized by stroking it with a magnet (fridge magnet, etc.) enabling it to hold the screws and make assembly easier.

If a screw is tight going into a metal part, do not force it as you may shear the head off. Remove it and put a tiny smear of Vaseline, soap or light oil on the thread. That will lubricate it and make it easier to drive home.

During the course of this build, you will receive many pieces that you will assemble immediately – following the instructions in the corresponding stage – and other pieces that you should store safely to one side, for use in future assembly stages.

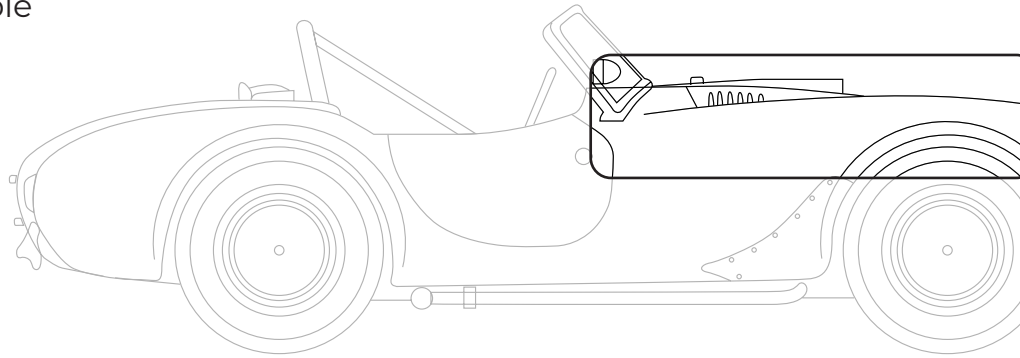
Left and Right! When building your Cobra, the left hand side refers to the driver's side of the car.



WARNING: Some parts are assembled using magnets. These magnets can cause serious injury if they are swallowed. Keep away from children. If you suspect a magnet has been swallowed, seek medical help straight away.

Stage 01: Hood Assembly

In this first stage of building the Shelby Cobra, you will assemble parts of the hood.



STAGE 01 PARTS LIST

Name	Quantity
Hood	1
Air intake	1
Hood latch	2
Hood lock ring	2
Rubber strips	2
Left hood handle	1
Right hood handle	1
Front badge	1
Screwdriver	1
Spring	2
Screws TYPE OP01	3 [Including 1 spare]
Screws TYPE OP02	3 [Including 1 spare]



Stage 01: Hood Assembly

STEP 1

ATTACH THE RUBBER STRIPS

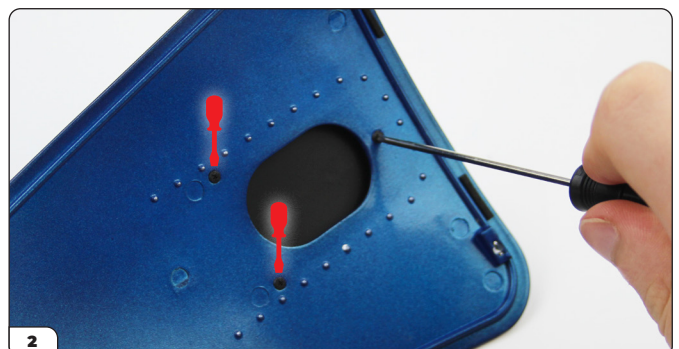
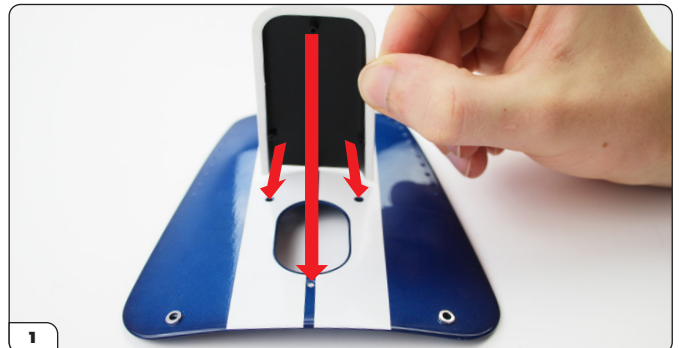
Take the hood and lay it carefully, upside down on your work surface. It's a good idea to lay it on top of the Agora cleaning cloth, or other modeling-board surface, so that you don't scratch the paintwork. Using a pair of tweezers, pick up a rubber strip, peel back the adhesive backing, and position the strip on the hood in the position shown. There is no specific position for the strip. Press gently in place. Repeat with the second rubber strip on the opposite side of the hood.



STEP 2

ATTACH THE AIR INTAKE

With the hood in one hand, align the lugs on the air intake with the holes on top of the hood, with the gap facing forwards. Hold in place and turn the assembly over to secure with three TYPE OP02 screws. Start by putting all the screws in loosely, and then tighten them.



Stage 01: Hood Assembly

STEP 3

ATTACH THE HOOD HANDLES

Note that the hood handles are marked left (L) and right (R).

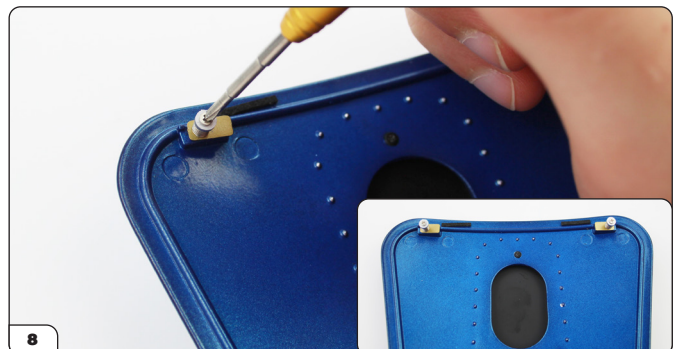
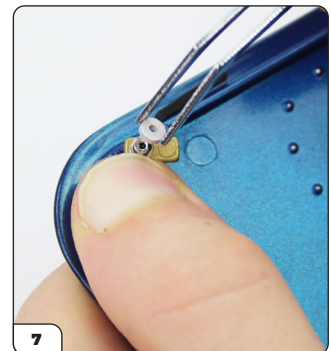
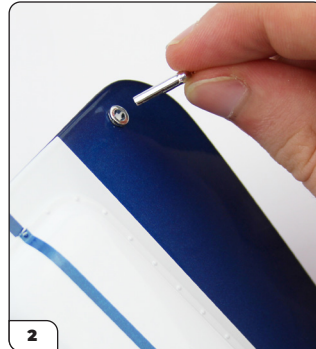
Take the left hood handle and push it through the hole on the left hand side of the hood. From the underside, thread a gold-coloured hood latch over the protruding handle, followed by a spring and then a hood lock ring. Secure these components in place using a TYPE OP01 screw, checking that the components are oriented in the direction shown before tightening the screw. Repeat for the handle on the right hand side. Be careful not to over tighten these screws as you can easily strip the threads.

Keep your Shelby badge for assembly at a later stage.



ADVICE FROM THE EXPERTS

You may find it easier to place the hood lock ring on the screw and then screw this into the handle stem. (This reduces the risk of the lock ring being catapulted into orbit by the spring).



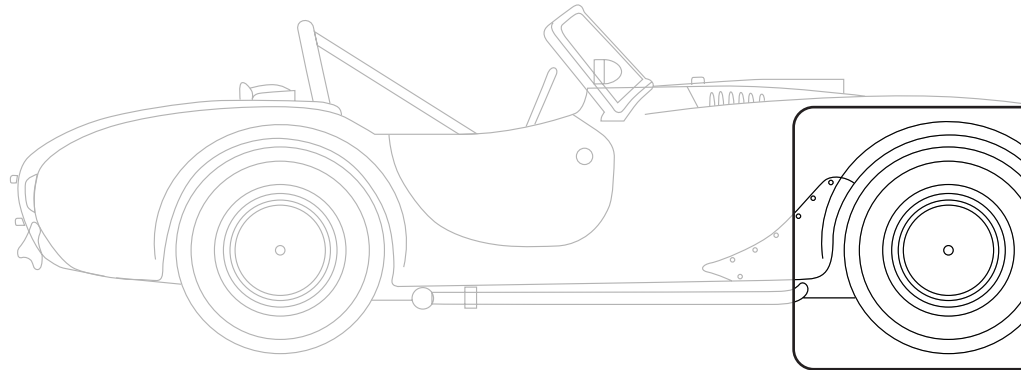
Stage 01: Hood Assembly

Stage 01 complete!



Stage 02: Front Left Wheel

In stage 02, you will build the front left wheel.



STAGE 02 PARTS LIST

Name	Quantity
Tire	1
Wheel hub	1
Hubcap	1
Brake caliper	1
Inner rim	1
Outer rim	1
Three-eared knock-on	1
Brake disc	1
Wheel	1
Screws TYPE OD01	2 [including 1 spare]
Screws TYPE OD02	2 [including 1 spare]
Screws TYPE OP03	9 [including 1 spare]



Stage 02: Front Left Wheel

STEP 1

SOFTEN THE TIRE

The first step in assembling the wheel is to soften the tire by soaking it in a hot water-bath, filled with water straight from a kettle. The water must be very hot, so take care, and have everything in place and ready before you start.

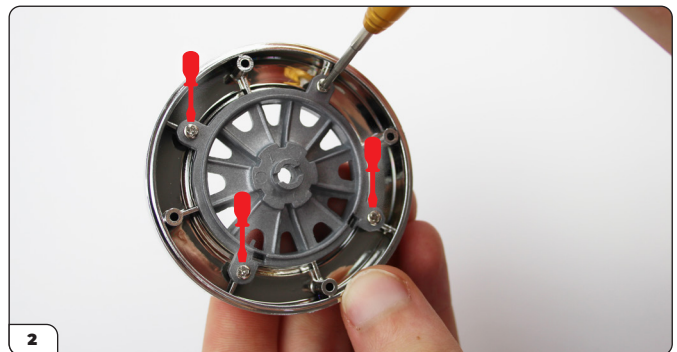
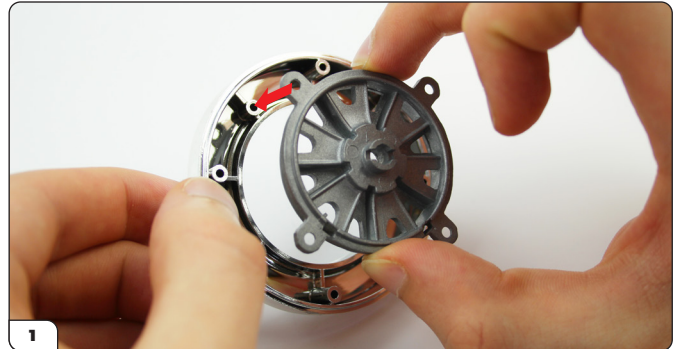
Soak the tire in the water-bath for five minutes.



STEP 2

ASSEMBLE THE WHEEL IN THE RIMS

While the tire is softening in the hot water, assemble the rims. First, place the wheel inside the outer rim, aligning the screw holes. The wheel should project into the rim so the screw holes sit flush. Secure in place using 4 x OP03 screws. Then take the inner rim and fix it to the outer rim and wheel assembly, aligning the screw holes. Secure in place with 4 x OP03 screws. Insert all 4 screws loosely before tightening any of them.



Stage 02: Front Left Wheel

STEP 3

FIT THE TIRE TO THE WHEEL

Remove the tire from the water-bath and dry on a cloth or kitchen roll. Take care, it may still be very hot so use tweezers to remove it from the water.

Hold the wheel assembly at a right angle to the tire and push halfway through the tire before sliding it into place. Firmly ease the tire around the wheel.

Fitting the tire requires some force, so push hard and act quickly while the tire is hot and soft enough to stretch.

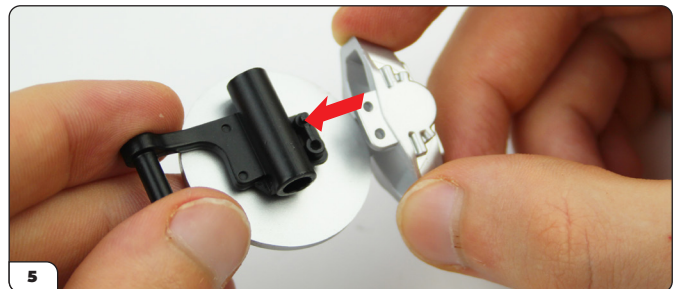
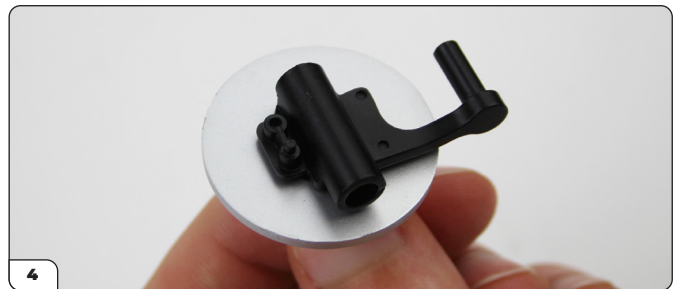


Stage 02: Front Left Wheel

STEP 4

ASSEMBLE BRAKE COMPONENTS

Push the hubcap into the center of the three-eared knock-on. This is a friction fit and will stay in place without screws. Align the wheel hub with the brake disc and position the pieces together. Align the tiny hole on the brake caliper with the tiny lug on the wheel hub. Position the pieces together and secure with a TYPE OD01 screw.



Stage 02: Front Left Wheel

STEP 5

COMPLETE THE WHEEL

Place the wheel hub assembly in the inside of the wheel, aligning the lug on the brake disc with the corresponding notch on the wheel. Secure in place from the outside of the wheel using a TYPE OD02 screw. Finish by placing the knock-on assembly in the center on the outside of the wheel. The knock-on assembly is magnetic and will stay in place without screws.



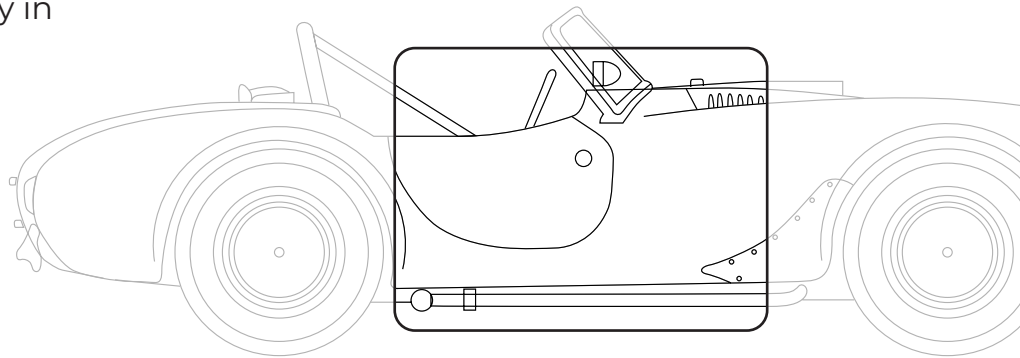
Stage 02: Left Front Wheel

Stage 02 complete!



Stage 03: Steering Wheel and Exhaust Parts

In stage 03 you will prepare the exhaust pipes for full assembly in stage 4.



STAGE 03 PARTS LIST

Name	Quantity
Steering wheel	1
Steering wheel emblem	1
Passenger's seat	1
Roll bar	1
Exhaust cylinder	1
Exhaust tip	1

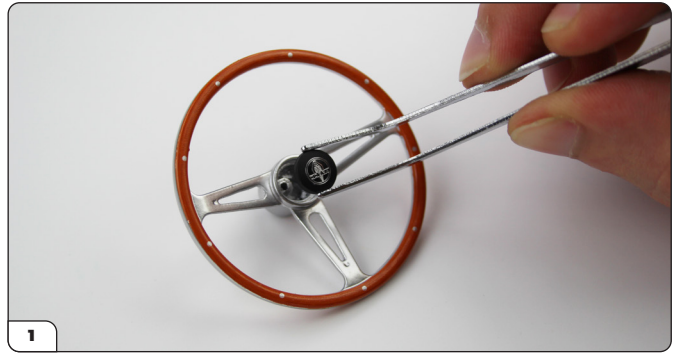


Stage 03: Steering Wheel and Exhaust Parts

STEP 1

FIX THE COBRA EMBLEM TO THE STEERING WHEEL

Assemble the steering wheel by pushing the Cobra emblem into the recess in the center of the wheel. Ensure you have it in the correct orientation – as shown – and push firmly.

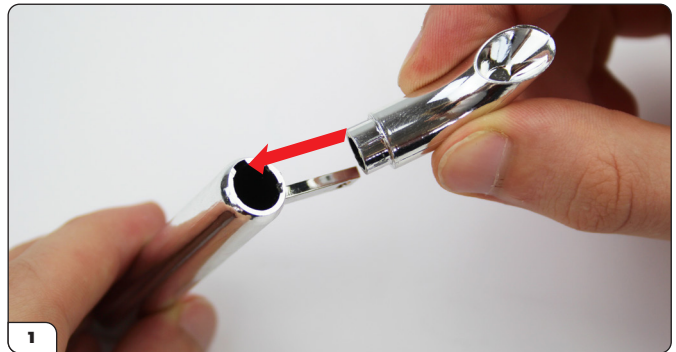


STEP 2

ASSEMBLE THE EXHAUST PARTS

Take the exhaust pipes and align the lug on the exhaust tip with the notch on the exhaust cylinder. Push the two pieces together. You will add more exhaust pipes to this assembly in the next stage.

The steering wheel, seat and roll bar are ready for assembly with new components at a later stage.



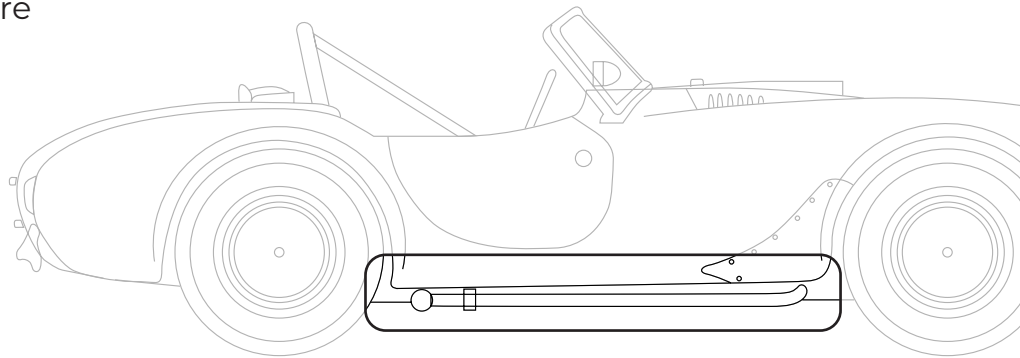
Stage 03: Steering Wheel and Exhaust Parts

Stage 03 complete!



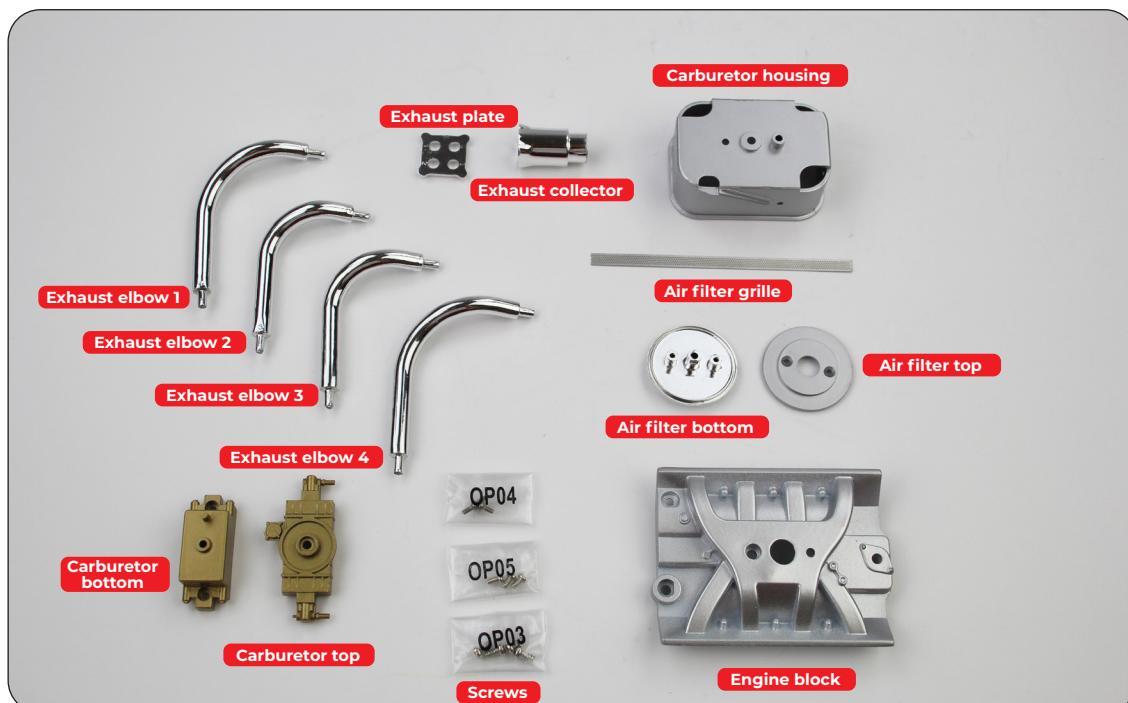
Stage 04: Engine & Exhaust Parts

In stage 04, you will start building the engine, and assemble more exhaust pipes.



STAGE 04 PARTS LIST

Name	Quantity
Air filter bottom	1
Air filter top	1
Air filter grille	1
Carburetor top	1
Carburetor bottom	1
Carburetor housing	1
Engine block	1
Exhaust elbow 1	1
Exhaust elbow 2	1
Exhaust elbow 3	1
Exhaust elbow 4	1
Exhaust collector	1
Exhaust plate	1
Screw TYPE OP03	4 [including 1 spare]
Screw TYPE OP04	3 [including 1 spare]
Screw TYPE OP05	3 [including 1 spare]



Stage 04: Engine & Exhaust Parts

STEP 1

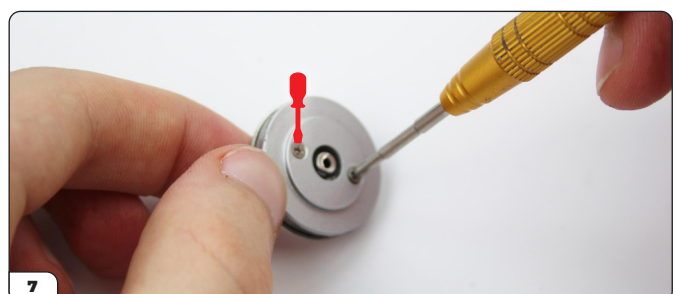
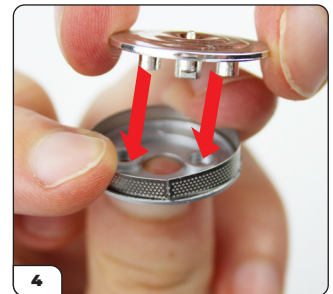
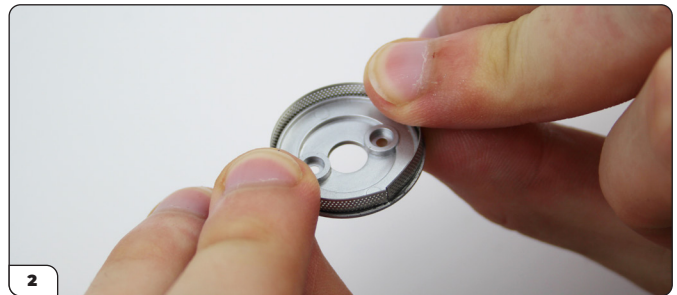
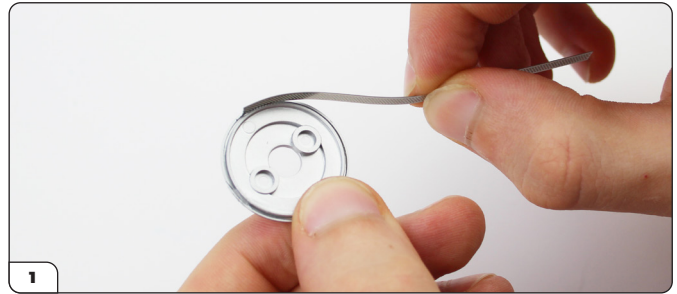
ASSEMBLE THE AIR FILTER

To start assembling the air filter, take the air filter bottom in one hand and wrap the air filter grille around the ridge on the circumference. The grille is the same both sides, so may be fixed either way up. Hold the grille in place with one hand, and place the air filter top on to hold the pieces together. Use a pair of tweezers or screwdriver to tuck in the end of the grille if necessary (picture 5). Ensure the screw holes are aligned and fix the parts together using 2 x TYPE OPO4 screws.



ADVICE FROM THE EXPERTS

Roll the filter grill round the handle of a wooden spoon to get an even curve.

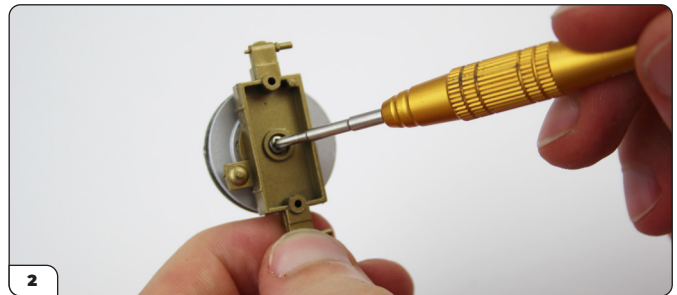
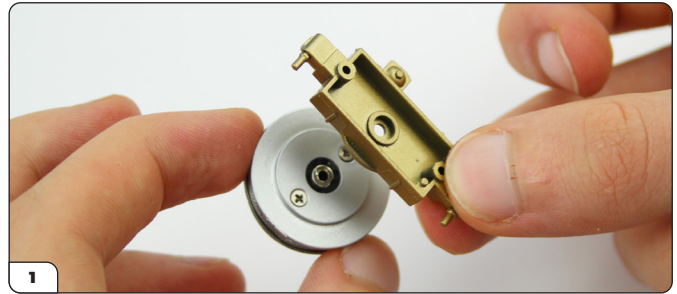


Stage 04: Engine & Exhaust Parts

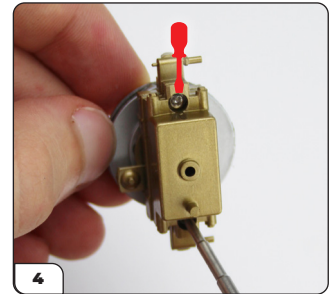
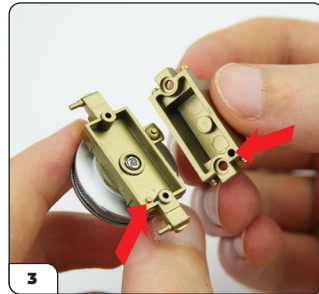
STEP 2

ATTACH THE CARBURETOR

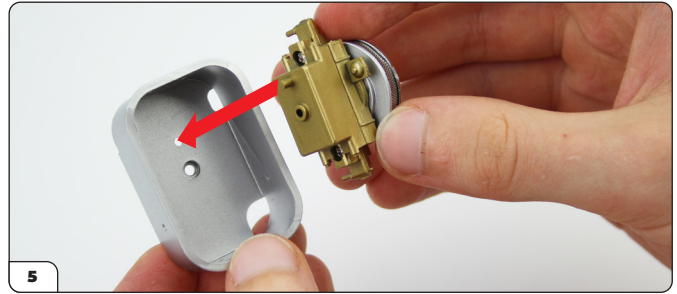
Align the carburetor bottom with the air filter assembly – the 'D' shape of the air filter and carburetor determines the orientation of the parts. Attach the pieces together using a TYPE OP03 screw.



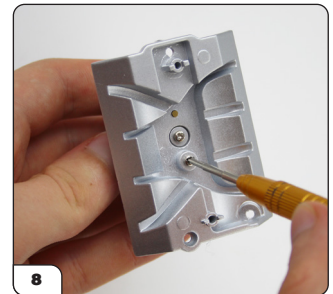
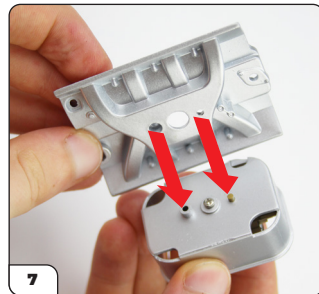
Then add the carburetor top, aligning the tiny hole with the corresponding lug (picture 3) in the corners, fixing the parts together using 2 x TYPE OP05 screws.



Align the lug on the carburetor assembly with the hole in the carburetor housing and drop the assembly into the housing. Fix in place using a TYPE OP03 screw.



Align the lugs and holes on the engine block with the carburetor housing and fix together using a TYPE OP03 screw.



Stage 04: Engine & Exhaust Parts

STEP 3

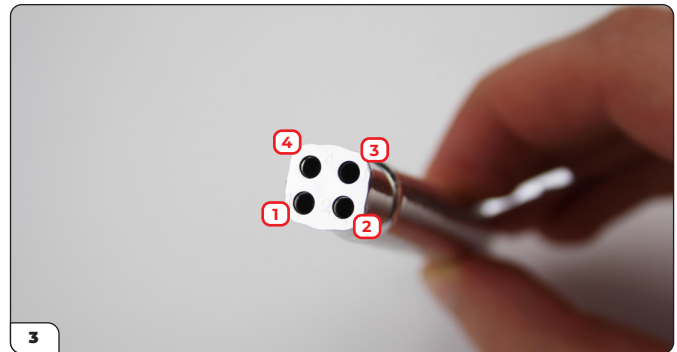
ASSEMBLE THE EXHAUST PARTS

Align the notch on the exhaust collector with the exhaust cylinder and tip assembly from stage 3. Push the parts together firmly. Look at the end of the exhaust collector – you will see holes are numbered 1–4. These holes correspond with the numbers on the end of the exhaust elbows. Attach the exhaust elbows by pushing them firmly into the exhaust collector.

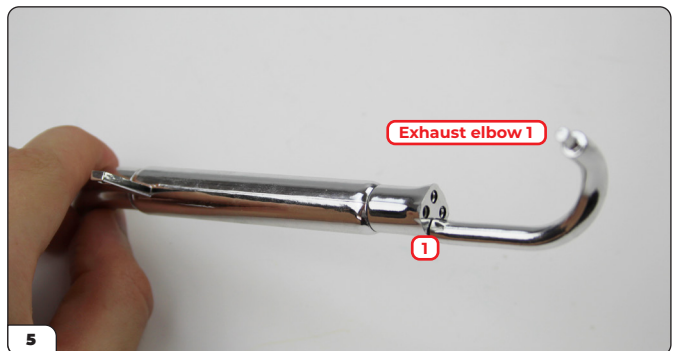
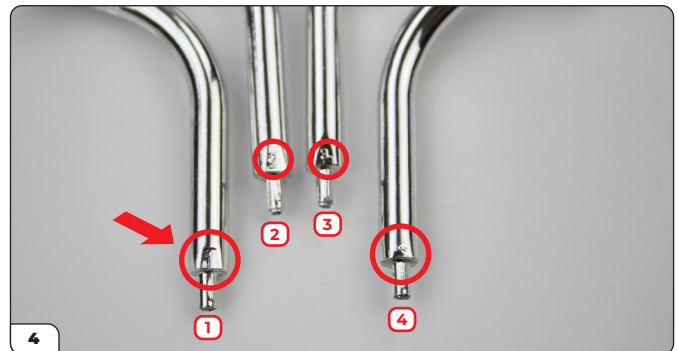


ADVICE FROM THE EXPERTS

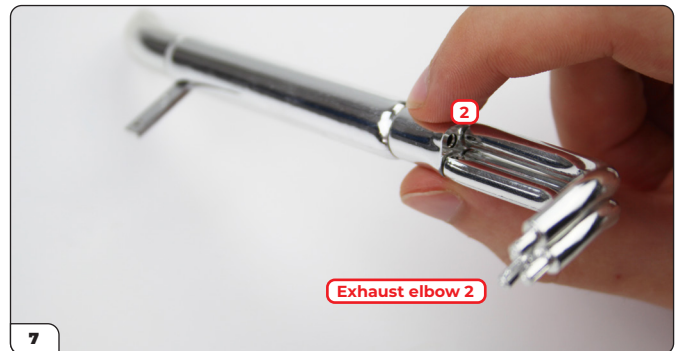
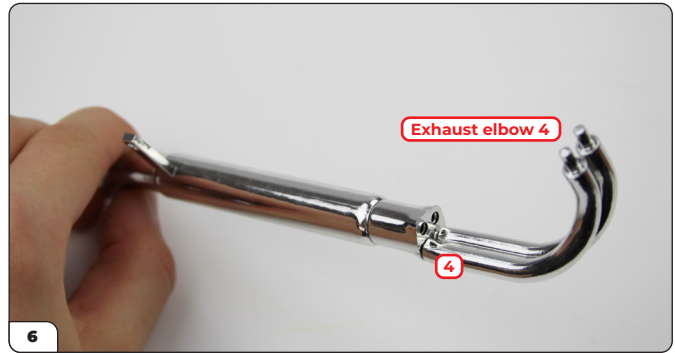
Do not try to twist the exhaust pipes in the holes as you'll probably shear off the locating pin. You should pull them out and re-insert them with the correct alignment.



The flats with the number on (see picture 4) should face each other for correct alignment. Once all four pipes are firmly in place, hold the ends together and align the four ends with the exhaust plate. This is also engraved with the numbers 1–4 to assist with correct alignment.



Stage 04: Engine & Exhaust Parts



Note the correct orientation of the exhaust plate – the raised corners should face outwards towards the pipes (picture 10).

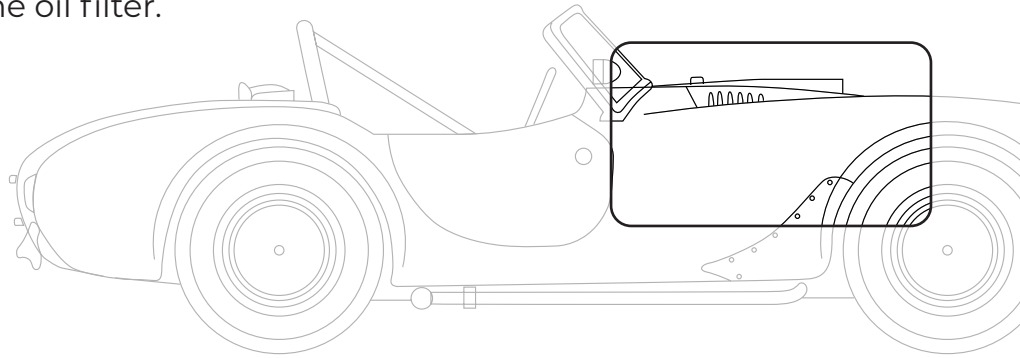
Stage 04: Engine & Exhaust Parts

Stage 04 complete!



Stage 05: Oil Filter and Exhaust Parts

In stage 05, you will start to assemble the next side exhaust and build the oil filter.



STAGE 05 PARTS LIST

Name	Quantity
Oil filter part 1	1
Oil filter part 2	1
Oil filter holder	1
Spacer	1
Front engine plate	1
Exhaust cylinder	1
Exhaust tip	1
Screws TYPE OP03	5 [including 1 spare]

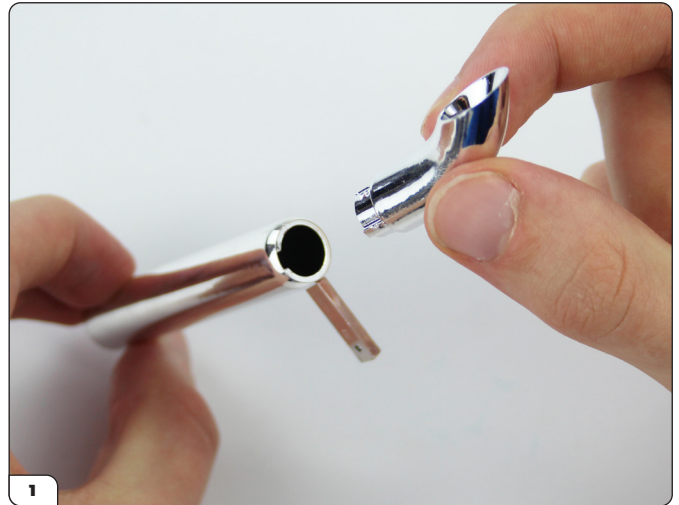


Stage 05: Oil Filter and Exhaust Parts

STEP 1

BEGIN ASSEMBLY OF THE SECOND SIDE EXHAUST

Take the exhaust tip and align with the notch on the end of the exhaust cylinder. Push these parts together firmly. You have now assembled the first parts of your second side exhaust.

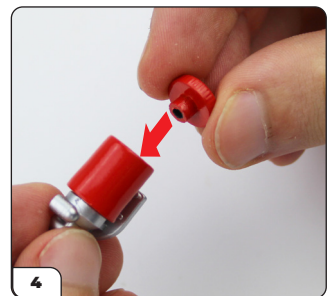
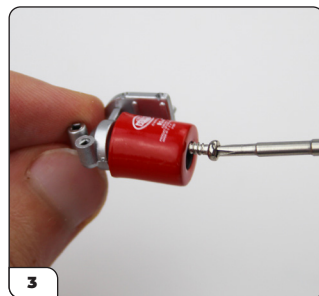


Stage 05: Oil Filter and Exhaust Parts

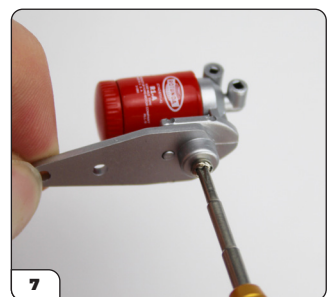
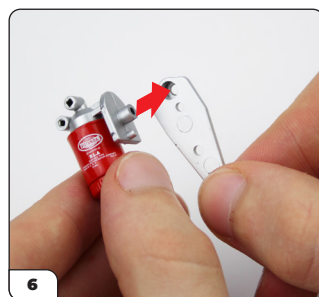
STEP 2

ASSEMBLE THE OIL FILTER AND MORE ENGINE PARTS

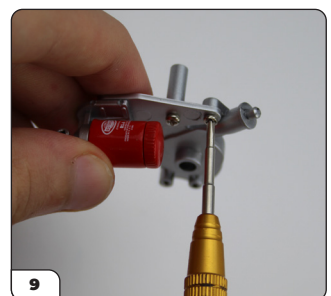
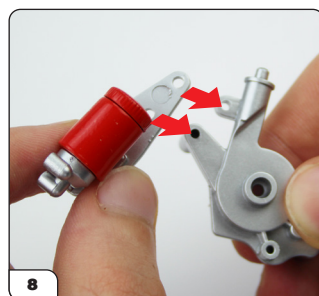
Take the oil filter holder and align the notch on oil filter 2 with the projecting lug. Fix in place with a TYPE OP03 screw inside the barrel of oil filter 2. Press oil filter 1 over the end of oil filter 2.



Orient the spacer as shown and position it on the side of the oil filter holder. Fix in place using a TYPE OP03 screw.



Align the screw holes at the bottom of the spacer with the screw holes on the front engine plate. Fix the parts together using 2 x TYPE OP03 screws.



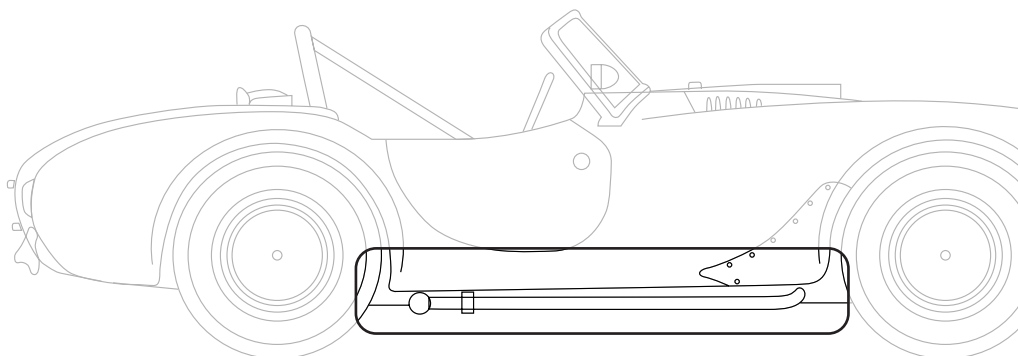
Stage 05: Oil Filter and Exhaust Parts

Stage 05 complete!



Stage 06: Exhaust Pipes

In stage 06, you will complete the second side exhaust.



STAGE 06 PARTS LIST

Name	Quantity
Exhaust elbow part 5	1
Exhaust elbow part 6	1
Exhaust elbow part 7	1
Exhaust elbow part 8	1
Exhaust plate	1
Exhaust collector	1



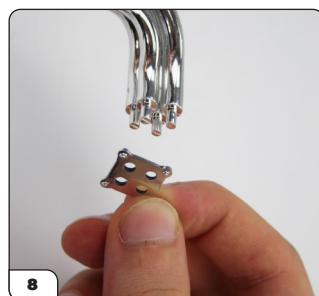
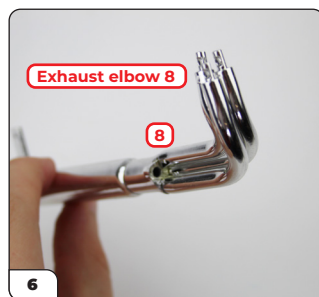
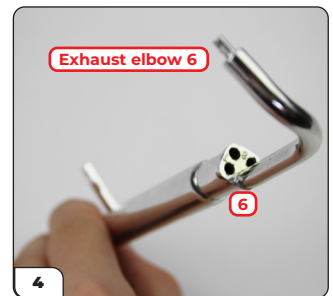
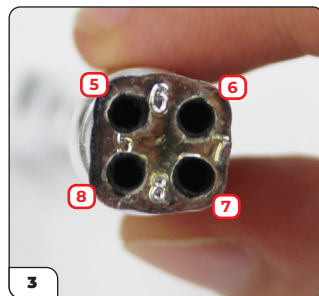
Stage 06: Exhaust Pipes

STEP 1

ASSEMBLE THE EXHAUST PIPES

The process here is the same as the exhaust assembly in stage 4.

Align the ridge on the exhaust collector with the notch on the exhaust cylinder and tip assembly from stage 5. Push the parts together firmly. Look at the end of the exhaust collector – you will see holes are numbered 5–8. These holes correspond with the numbers on the end of the exhaust pipes. Attach the exhaust pipes by pushing them firmly into the exhaust collector in their corresponding holes. Once all four pipes are firmly in place, hold the ends together and align the four ends with the exhaust plate. Note the correct orientation of the exhaust plate – the raised corners should face outwards towards the pipes.



Stage 06: Exhaust Pipes

Stage 06 complete!

